

NEW STAGE  
THEATRE  
PRESENTS

# 33 Variations

BY MOISÉS KAUFMAN

MUSIC BY LUDWIG VAN BEETHOVEN

DIRECTED BY IVAN RIDER

APRIL 14 – 26, 2015

SPONSORED BY

SELBY AND RICHARD MCRAE  
FOUNDATION

**NEW STAGE**  
*Theatre*

STAGE MANAGER  
ELISE MCDONALD

SCENIC/LIGHTING  
DESIGNER  
BRENT W. LEFAVOR

TECHNICAL DIRECTOR/  
PROPERTIES DESIGNER  
RICHARD LAWRENCE

SOUND DESIGNER  
RICHART SCHUG

PROJECTION DESIGN  
JEFF SUGG

COSTUME DESIGNER  
LESLEY RAYBON

WIG DESIGN  
CARPENTER WIG DESIGN THEATRICAL HAIR GOODS



# 33 Variations

Originally produced on Broadway, 2009

by

David Binder

Ruth Hendel     Barbara Whitman

Goldberg/Mills     Latitude Link     Arielle Tepper Madover     Bill Resnick

Eric Schnall     Jayne Baron Sherman     Willis/True Love Productions

and

Tectonic Theatre Project

(Greg Reiner, Executive Director; Dominick Balletta, General Manager;

Jeffrey LaHoste, Senior Producer)

33 VARIATIONS is presented by special arrangement with  
Dramatists Play Services, Inc., New York.

---

## SETTING

Time: 1819, 1823, and the present

Place: New York, U.S.A; Bonn, Germany; and Vienna, Austria

Contains Mature Language

*There will be one 10 minute intermission*

## CAST (In Order of Appearance)

Dr. Katherine Brandt .....	Francine Thomas Reynolds
Clara Brandt .....	Ali Dinkins
Mike Clark .....	Drew Stark
Anton Diabelli .....	Bill Ford Campbell*
Anton Schindler .....	Turner Crumbley*
Ludwig Van Beethoven .....	Larry Wells
Dr. Gertrude Ladenburger .....	Jo Ann Robinson*
Pianist .....	Harlan Zackery, Jr.

\*The actor appears through the courtesy of Actors' Equity Association, the Union of Professional Actors and Stage Managers in the United States.

The videotaping or other video or audio recording of this production is strictly prohibited.

## AUTHOR'S NOTE

Although this play is based on a historical event, namely the birth of the *Diabelli Variations*, I have chosen to explore this story from a fictional perspective. Thus, this play is not a reconstruction of a historical event: rather, it's a series of variations on a moment in a life.

## INFORMATION ABOUT THE ALS ASSOCIATION

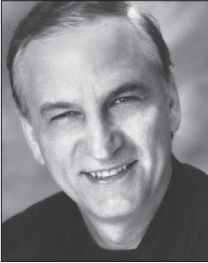
The mission of The ALS Association Louisiana-Mississippi Chapter is to lead the fight to treat and cure ALS through global research and nationwide advocacy while also empowering people with Lou Gehrig's Disease and their families to live fuller lives by providing them with compassionate care and support.

Amyotrophic Lateral Sclerosis (ALS) is a progressive and fatal neuromuscular disease that affects voluntary muscle movement. Persons with ALS are paralyzed – unable to walk, speak, swallow or breathe on their own. The disease can affect adults of all ages, most often between the ages of 40 and 70. After diagnosis, most persons with ALS have two to five years to live. According to prevalence rates, it is estimated that there are more than 200 people living with ALS in Mississippi.

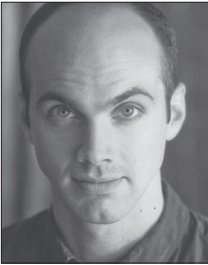
The ALS Association Louisiana-Mississippi Chapter's programs include personal home visits with patients and their caregivers and consultations via telephone and e-mail to assess needs and answer questions; assistance with healthcare navigation; support groups for patients and their caregivers; a durable medical equipment and assistive technology loan closet; a multidisciplinary clinic; a transportation program; respite for caregivers; education and awareness activities; outreach to identify new patients; advocacy efforts on a state and national level; and support for international research for treatment and a cure. The ALS Association is the only organization in Louisiana providing all of these services.

Every dollar makes a difference. \$25 would pay for adaptive eating utensils for a person who is experiencing muscle weakness in his or her hands. \$50 could cover the cost of one hour of respite for a caregiver. \$100 could pay for an in-home consultation with a patient and his or her family. \$250 can buy a manual wheelchair. \$500 could purchase an iPad mini that could be used as a communication device for a patient who has lost the ability to speak but still has use of his or her hands. \$1,000 covers the costs of a support group meeting for one year. For more information please visit [www.alsalams.org](http://www.alsalams.org).

## THE CAST



**BILL FORD CAMPBELL\*** (Anton Diabelli) recently appeared as Charlie “The Duck” Clench in *One Man, Two Guvnors*; Sen. Richard Russell in *All The Way* and as Uncle John in *The Grapes of Wrath*. Over the past 30 seasons, some of his favorite roles have included Ben in *Broadway Bound*; Paul in *Misery*; Ivan in *Art*; Frank in *Molly Sweeney*; Scrooge in *A Christmas Carol*; Tito in *Lend Me A Tenor*; Nixon in *Nixon’s Nixon*; Froggy in *The Foreigner* and Carl in *Getting Out*. His musical credits include El Gallo in *The Fantastiks*; The Pirate King in *The Pirates of Penzance* and Dorris R. Gladney in the world premiere of the musical based on Eudora Welty’s *The Ponder Heart*. Campbell also has appeared at St. Petersburg’s American Stage, Little Rock’s Arkansas Repertory Theatre, the Hippodrome in Gainesville, Fla. and Mill Mountain Theatre in Roanoke, Va.



**TURNER CRUMBLEY\*** (Anton Schindler) has appeared in a number of New Stage productions - recently *The 39 Steps* and *The Great Gatsby*. For the theatre’s Unframed series, he performed David Sedaris’ *The SantaLand Diaries* and directed Conor McPherson’s *The Good Thief*. Regional stage credits include *Unnecessary Farce* (St. Michael’s Playhouse); *A Tuna Christmas* (Cape May Stage) and *Big River* (Mill Mountain Theatre). In addition to two years singing and dancing aboard cruise ships, various commercials, shorts, and television, Crumbley can be seen opposite Mark Wahlberg in “Contraband” and Jonah Hill in “21 Jump Street”. Laurel native, USM graduate. [Turnercrumbley.com](http://Turnercrumbley.com)



**ALI DINKINS** (Clara Brandt) has considered New Stage her theatre home since she was an acting intern. Last season she appeared in *Sherlock Holmes and the Adventures of the Suicide Club* and *The Miss Firecracker Contest*. In previous seasons she appeared in *All My Sons*; *Boeing! Boeing!*; *Cat on a Hot Tin Roof*; *First Baptist of Ivy Gap*; *Shiloh Rules*; *Skin of Our Teeth*; *A Funny Thing Happened on the Way to the Forum* and *It’s a Wonderful Life: Radio Play*. Dinkins completed her undergraduate work at Baylor University and graduate work at Wayne State University.

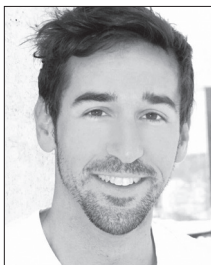


**FRANCINE THOMAS REYNOLDS** (Dr. Katherine Brandt/Artistic Director) has worked as a professional actress and director for more than 24 years. She has been the artistic director at New Stage Theatre since 2006 and most recently directed *One Man, Two Guvnors* and *All The Way*. Last season she directed *The Miss Firecracker Contest*, *The Whipping Man* and *The Grapes of Wrath*. She appeared in New Stage productions as Polly in *Other Desert Cities*; Lucille in *Dividing the Estate* and as Edna Earle in Eudora Welty's *The Ponder Heart*. She has directed a variety of shows including *Hairspray*; *Mahalia: A Gospel Musical*; *The Great Gatsby*; *Lombardi*; *Boeing, Boeing*; *Breaking Up is Hard to Do*; *Sherlock Holmes: The Final Adventure*; *A Christmas Carol*; *Gee's Bend*; *A Raisin in the Sun*; *Annie*; *Joseph and the Amazing Technicolor Dreamcoat*; *A Soldier's Play* and *I Love You, You're Perfect, Now Change*. Reynolds has recently been invited to serve on the Board of Directors for the Theatre Communications Group (TCG), the national organization for the American theatre and she was a member of the Leadership Mississippi Class of 2014. Panels and other associations include the National Endowment for the Arts 2013 grants panel, Poetry Outloud, Mississippi Arts Commission grants panel, The Mississippi Alliance for Arts Education Board of Directors and The Mississippi Theatre Association Board of Directors. Reynolds has enjoyed adjudicating and serving as commentator for the Mississippi High School Drama Festival, Southeastern Theatre Conference auditions and Mississippi's English Speaking Union Shakespeare Competition. Originally from the Upper Peninsula of Michigan, Reynolds enjoys living in Jackson with her husband, Chuck.



**JO ANN ROBINSON\*** (Dr. Gertrude Ladenburger) has worked professionally for more than 30 years in television, film and regional theatres across the U.S. From 1978-1989, she was based out of Los Angeles where credits included co-starring roles in *The New Love American Style* and the nationally syndicated *Comedy of Comedies*. She also appeared as a stand-up comedienne at Hollywood's Laugh Factory and The Ice House, famous for featuring headliners such as Jay Leno and Joan Rivers. She was also a founding member of the comedy group Half-A-Deck, named as 'Best Bet' by the *LA Times*. Robinson has been a regular at New Stage since 1990. Some show credits include *The Grapes of Wrath*; *Lombardi*; *First Baptist of Ivy Gap*; *The Trip to Bountiful*; *The Skin of Our Teeth*; *Idols of the King*; *Don't Dress for Dinner*; *Broadway Bound*; *Marvin's Room*; *Proof*; *Grace & Glorie*; *Misery* and *Rumors*. Other regional theatre credits include *A Streetcar Named Desire*, *Angels in America I and II* and *Lips Together, Teeth Apart*. Robinson's most recent film credit is the Arliss Howard/Debra Winger film "Big Bad Love" where she played opposite Arliss Howard. Robinson was also nominated for Best Actress for the prestigious B. Iden Award given by the Austin, Texas Critics Circle.





**DREW STARK** (Mike Clark) is excited to return to New Stage after serving as the fight choreographer for this season's *Peter Pan*. A Mississippi native, Stark graduated with a BA in music from the College of William and Mary and studied musical theatre at New York University's CAP21 Program and dance and Pilates at Dance New Amsterdam. He began working with Prather Entertainment Group over a decade ago, where he performed some of his favorite touring roles, including Rum Tum Tugger (*CATS*); Adam/Benjamin (*Seven Brides for Seven Brothers*); Pharaoh (*Joseph and the Amazing Technicolor Dreamcoat*) and the UPS guy (*Legally Blonde*). He has also worked with several other regional theatres across the country, including Playhouse on the Square; *The King and I* (Springer Opera House); *My Way* (Seaside Repertory Theatre); *West Side Story* (Circa '21 Dinner Playhouse); *White Christmas* (Cumberland County Playhouse); *Dames at Sea* (Temple Theatre); Oklahoma Shakespearean Festival and The Lost Colony. Currently, he enjoys choreographing for local area high schools and performing with Starkville Community Theatre. He would like to thank Francine and Ivan for this opportunity and especially to his parents, who continue to inspire him.



**LARRY WELLS** (Ludwig Van Beethoven) appeared earlier this season as Stanley Levison in New Stage's production of *All the Way*. In recent seasons, he has acted roles in *The Grapes of Wrath* (Pa Joad); *Sherlock Holmes and the Adventure of the Suicide Club* (Mr. Henry); *Other Desert Cities* (Lyman Wyeth); *Dracula* (Van Helsing); *The Miracle Worker* (Captain Keller) and *To Kill a Mockingbird* (Judge Taylor). Wells is a theatre graduate of Millsaps College where he studied under the late Lance Goss. In addition to acting, he has served as company armorer for a number of productions at New Stage and Millsaps.



**HARLAN ZACKERY, JR** (Pianist/Musical Director) is a member of the music faculty of Jackson State University and serves as Director of Music at Aldersgate United Methodist Church. His New Stage credits include *Peter Pan*; *Hairspray*; *Mahalia: A Gospel Musical*; *Crowns*; *Breaking Up Is Hard To Do*; *I Love You, You're Perfect, Now Change*; *The Fantasticks* and *Gutenberg! The Musical!* He completed the Bachelor of Music degree in music education, cum laude, as well as the Master of Music in choral conducting at the University of North Carolina at Greensboro, where he was a 2004 winner of the UNCG Conducting Competition. He is a member of Phi Mu Alpha Sinfonia music fraternity, and Pi Kappa Lambda music honor fraternity. Zackery has taught band and chorus in middle and elementary schools in North Carolina. In addition, he has served as assistant director

The logo consists of two overlapping speech bubbles. The top bubble is larger and contains the words "actor" and "chat" in a stylized, lowercase font. The bottom bubble is smaller and empty.

## actor chat

Stay and meet the cast after **33 Variations** following the show on Wednesday, April 15 and Wednesday, April 22. Audience members may ask questions of the actors, director and designers in an informal setting.

of the Durham Youth Symphony and has been on the faculties of Bennett College and Guilford College. He has performed throughout the United States, Europe, Mexico and Canada as a piano soloist, accompanist, conductor and clinician. He is currently completing requirements for the Doctor of Musical Arts at the University of Southern Mississippi.

## THE PRODUCTION STAFF

**MOISÉS KAUFMAN** (Playwright) is a Tony and Emmy nominated director and playwright. His play **33 Variations**, was nominated for five Tony awards. Previous to that, Kaufman directed the Pulitzer and Tony award-winning play *I Am My Own Wife*, earning him an Obie award for his direction as well as Tony, Drama Desk, Outer Critics Circle, and Lucille Lortel nominations. His plays *Gross Indecency: The Three Trials of Oscar Wilde* and *The Laramie Project* have been among the most performed plays in America over the last decade. Kaufman also directed the film adaptation of "The Laramie Project" for HBO, which was the opening night selection at the 2002 Sundance Film Festival and won the National Board of Review Award, the Humanitas Prize, and a Special Mention for Best First Film at the Berlin Film Festival. The film also earned Kaufman two Emmy Award nominations for Best Director and Best Writer. He is the Artistic Director of Tectonic Theater Project and a Guggenheim Fellow in Playwriting. Other credits include *Bengal Tiger at the Baghdad Zoo* (Mark Taper Forum); *Macbeth* with Liev Schreiber (Public Theater); *This Is How It Goes* (Donmar Warehouse); *One Arm* by Tennessee Williams (Steppenwolf Theater Company); *Master Class* with Rita Moreno (Berkeley Repertory Theater); and *Lady Windermere's Fan* (Williamstown Theater Festival).

**IVAN RIDER** (Director) was the first artistic director at New Stage Theatre. He served in that capacity for 13 years. Mr. Rider has directed more than 100 productions at New Stage. His most recent productions are *Other Desert Cities*; *Red, White & Tuna*; and *Driving Miss Daisy*. A resident of Houston, he also has directed at many regional theatres including Alley Theatre, Dallas Theatre Center and the Shakespeare Festival of Dallas.

**ELISE MCDONALD** (Stage Manager) is in her fourth season at New Stage. She is a graduate of The University of Southern Mississippi with a Bachelor's degree in Theatre. She began stage management while at Southern and was able to work on shows such as *Light Up the Sky*, *A Lesson From Aloes*, *Fallen Angels*, *The Good Doctor*, *Big Love*, *Little Shop of Horrors*, and *Electra*. She was also able to stage manage *Carmen* with the Mississippi Opera. She worked as a Production Assistant in Stage Management at the Arkansas Repertory Theatre and had the chance to work backstage on shows such as *Les Miserable*, *The Foreigner*, *The Elephant Man* and *The Who's Tommy*. McDonald has previously stage managed several shows at New Stage Theatre including: *Twelfth Night*, *Driving Miss Daisy*, *Dracula*, *Annie*, *Lombardi*, *The*

*Lion the Witch and the Wardrobe, All My Sons, The Marvelous Wonderettes, The Foreigner, The Great Gatsby, A Christmas Memory, Cat in the Hat, Mahalia, Other Desert Cities, Hairspray, Sherlock Holmes and the Adventure of the Suicide Club, The Grapes of Wrath, A Christmas Carol, Goodnight Moon, The Whipping Man, The Miss Firecracker Contest and Shrek the Musical.* She is excited to be working with New Stage and would like to thank her family and friends for their unending support!

**BRENT W. LEFAVOR** (Scenic/Lighting Designer) M.A., MFA, has been a professional director and set/lighting designer since 1976. He designed lights at Robert Redford's Sundance Summer Theatre; was a founding member, director and designer for Walk-On's Inc. in Salt Lake City; worked as a director and designer Grand Teton Mainstage theatre in Jackson Hole, Wyo. Lefavor moved to Mississippi in 1983 where he taught for 25 years at a local liberal arts college. During that time he directed numerous productions, designed sets and lights for more than 100 shows, and taught in all areas of theater education. Lefavor begins his fifth season at New Stage Theatre where he has designed lights for numerous productions; his set designs for New Stage include: *All My Sons, The Miracle Worker, Cat on a Hot Tin Roof, Smokey Joe's Café, Noises Off* and *You're a Good Man Charlie Brown*. He has been seen as an actor in Jackson, appearing as Tevye in *Fiddler on the Roof*, Cromwell in *A Man for All Seasons* and C.S. Lewis in *Shadowlands*.

**LESLEY RAYBON** (Costume Designer) joined New Stage in 2004 as an acting intern and since then has worked both onstage and off. She has found her place as the resident costume designer and she has enjoyed designing shows and working with guest designers and costume shop assistants. Some of her favorite shows include: *The Grapes of Wrath, The Great Gatsby, Goodnight Moon*, and *The Cat in The Hat*. When not at New Stage, she is a barista at Starbucks, a puppeteer with Puppet Arts Theatre, and wife to her wonderful husband Lawrence.

**RICHARD LAWRENCE** (Technical Director/Properties Designer) serves as the Vice President of Fondren Theatre Workshop and most recently appeared in *A Christmas Memory* at New Stage, FTW's *The Rocky Horror Show*, *Buck Nekkid for Jesus*, and directed FTW's Christmas show, *Every Christmas Story Ever Told*. He also was the director of the widely successful productions of *Cabaret*, and *Company*, which were joint productions of FTW, and Actor's Playhouse of Pearl, with support from New Stage. Lawrence, has been seen in New Stage productions of *Trip to Bountiful* and UnFramed's *The Eight: Reindeer Monologues, How I Learned to Drive, The Weir, Circle Mirror Transformation*, and *Dublin Carol*. Lawrence has won two "Best Set" awards at Mississippi Theater Association conferences.

**RICHART SCHUG** (Sound Designer/Design Assistant/Production Assistant) has worked as a scenic painter and designer in New York at Purchase College SUNY, as well as at Timberlake Playhouse in Illinois, and Attic Theatre in Wisconsin. He has been at New Stage since September 2012.

**CLARA SEITZ** (Asst. Scenic Designer/Scenic Charge Artist/Production Assistant) is a graduate of the Mississippi University for Women and has been with New Stage for the last three seasons. *The Miss Firecracker Contest* is her twelfth show at New Stage. Previous credits include scenic design for *High School Musical, Jr., The Emperor's New Clothes*, and *Dublin Carol*. Seitz was also the scenic designer for the Unframed series production *Stick Fly*.



**JEFF SUGG** (Projections Design) is a New York based artist, designer, and technical advisor. Theater designs include: **33 Variations** (projections: Broadway, Arena Stage, La Jolla Playhouse); **Magic/Bird** (projections: Broadway); **Bring It On** (projections: Broadway); **The Slugbearers of Kayrol Island** (co-set and projections: The Vineyard Theater); **¡El Conquistador!** (lights: New York Theater Workshop); **The Thomashefsky Project** and **Let Them Eat Cake/Of Thee I Sing** (projections: San Francisco Symphony); Trece Días (sets & projections: San Francisco Mime Troupe). He has also worked as designer for multiple works with theater companies including: The Collapsable Giraffe; Pig Iron Theater Company; DASS Dance; Transmission Projects. Music design: Natalie Cole (lights) and Natalie Merchant (lights). In addition to his work as a designer, Sugg is regarded as a premiere technical consultant and system designer. Some credits include: The Wooster Group (technical artist); Laurie Anderson (video system design); Richard Foreman (video system design); Mikel Rouse (video system design); GALE Gates et al. (effects designer/engineer); and The Baseball Music Project (video system design). Sugg has also taught Media and Technology at Swarthmore College.

Choreographer ..... Linda Mann  
 Carpenter/Light Board Operator ..... Josh May  
 Sound Board/Projection Operator ..... Katie Beth Jewell, Pat Moran  
 Running Crew ..... Augustus Bennett, Valencia Proctor, Clara Seitz  
 Voices ..... Keri Horn, Brent Lefavor, Pat Moran, Stephenie Morrissey, Chris Roebuck  
 Additional Projection Designs ..... Richart Schug

## THE ADMINISTRATIVE STAFF

**DAWN BUCK** (Managing Director) began her career at New Stage in the fall of 1981 as a box office assistant. Since that time she has worked as box office manager, audience services director, house manager, bookkeeper, business manager and marketing director. Her door, she says, is always open to comments and concerns about the theatre. Buck's other professional credits include The International Ballet Competition, Thalia Mara Arts International presenting the **World Performance Series** and Imageworks *films for business*. She is a graduate of Leadership Jackson and lives in Jackson with her husband David.

**BILL MCCARTY III** (General Manager) is a graduate of the University of Mississippi and has extensive background in wholesale and retail sales and real estate property management with the Jitney Jungle stores. McCarty has volunteered with New Stage for more than 38 years in all areas including production, running crews, lighting and sound design and New Stage fundraising events. He is involved in the day-to-day management, maintenance and production for the theatre and serves on the Board of Directors. His favorite design credits are **Greater Tuna** 1986 production, **A Streetcar Named Desire**, **The Gin Game** and **A Christmas Carol** 1984 production.

**MELISSA TILLMAN** (Marketing Director) is a graduate of Belhaven University where she received a B.A. in technical theatre. Most recently at New Stage, she served as the audience services director. She has worked as a box office associate at Lawlor Events

Center in Reno, Nevada and assisted with many box office activities at Belhaven University. Tillman has stage managed many shows in several parts of the country, including Las Vegas and Tennessee. Her stage managing credits include *Oklahoma!*, *Meet Me in St. Louis*, *The Wizard of Oz*, *Taming of the Shrew* and *Love's Labours Lost*. Her most recent work includes *Noye's Fludd* and *La Boheme* with the Mississippi Opera. This is Tillman's ninth season with New Stage. She currently resides in Ridgeland with her husband, Kyle, son, River, and their dog, Charlie Brown.

**CHRIS ROEBUCK** (Education Director) graduated from Mississippi College with a B.A. in history. He taught for two years at Madison Central High School, where among other responsibilities he assisted with the Drama Club. Roebuck was an acting intern at New Stage Theatre, working with four other interns to take three touring shows across the state. Among his numerous professional acting credits, Roebuck has appeared in *All The Way*, *Shrek*, *Hairspray*, *The Foreigner*, *Annie*, *The 39 Steps*, *A Soldier's Play*, *A Year with Frog and Toad*, *The Ponder Heart*, *A Christmas Carol*, *Idols of the King*, *Forever Plaid*, and *A Raisin in the Sun*. In addition to the education touring shows, his directing credits include *Goodnight, Moon*, *The Cat in the Hat*, *The Lion*, *The Witch*, and *The Wardrobe*, *The Weir*, *Lilly's Purple Plastic Purse*, *A Christmas Carol* and *Dead Man's Cell Phone* at New Stage and *American Buffalo* and *Dinner with Friends* with Fondren Theatre Workshop.

**AMY SMITH** (Box Office Manager) is enjoying her fifth season at New Stage. A Mississippi native, Smith studied theatre performance at Belhaven University. She has stage managed shows such as *Almost, Maine* and *Five Women Wearing the Same Dress* for New Stage's Unframed Series, *Rabbit Hole* (2010 SETC Winner) for Actor's Playhouse, and *Die Fledermaus* for Mississippi Opera. Smith also directed the regional premier of *The Light in the Piazza* at Belhaven University, for the music department. When not at the theatre, Smith is playing with her two weimaraners, Dutch and Lily Belle, or planning her next trip to visit family in Alaska.

**BETTY WONG** (Box Office Assistant/ Education Consultant) begins her tenth season at New Stage. She enjoys traveling to schools throughout the state with the Professional Intern Company to provide live theatre experiences for students of all ages. When not on the road, you can find Betty in the box office. She has also served for many years as a volunteer in other areas of the theatre. Other work experiences include the Mississippi International Cultural Exchange Commission and the Mississippi Department of Education. She has served as a consultant to school districts throughout the state of Mississippi. Wong has a B.S. degree in educational psychology from Mississippi State University, and a M.Ed. from Delta State University.

**BARBARA MARTIN** (Box Office Assistant/Business Assistant) is in her nineteenth season at New Stage. First joining the staff in 1997, she has served as box office assistant for seventeen years and as box office manager for the two years before and during the Intermission Season. She also assists with development and business office functions.

**CARLA MARSH** (House Manager) received her B.A. in criminal justice with an emphasis in juvenile justice from Jackson State University. She is pleased to be returning to New Stage for her ninth season. Marsh has been employed with the Hinds County Sheriff's office for more than thirteen years.

## PROFESSIONAL ACTING INTERN COMPANY

New Stage Theatre's Professional Acting Intern Company is a primary component of the theatre's commitment to arts education. Interns tour the entire state to present plays and conduct workshops for students who would not otherwise have access to professional theatre. In addition to their touring schedule, interns also assist with the general operation of the theatre.

**AUGUSTUS BENNETT** (Acting Intern) has been seen this season at New Stage as Gareth in *One Man, Two Guvnors*, Skylights the Pirate in *Peter Pan* and Ralph Abernathy in *All The Way*. He is a recent graduate of the University of Central Florida, holding a Bachelor of Fine Arts in theatre. Before arriving at New Stage, he finished touring *King Arthur's Quest* with Missoula Children's Theatre. His favorite acting credits include *Gem of the Ocean*, *Drowsy Chaperrone*, *Kiss Me, Kate*, *A Little Night Music*, and *The Laramie Project*. He has also directed George C. Wolfe's *The Colored Museum* and the musical *I Love you, You're Perfect, Now Change*. Visit his website [www.augustusbennett.com](http://www.augustusbennett.com) to learn more.

**KATIE BETH JEWELL** (Directing/Acting Intern) recently graduated with a BFA in musical theatre from Samford University. There she danced in the ensembles of *White Christmas*, *The Pajama Game*, and *The Wizard of Oz*. At Samford, she also had the opportunity to direct two plays, and serve as assistant director for *The Light in the Piazza*. Favorite roles include Velma Von Tussle in *Hairspray* (FestivalSouth), Charlotte Hay in *Moon Over Buffalo*, and various roles in *The 39 Steps*.

**PATRICK MORAN** (Acting Intern) is a recent graduate from West Chester University of Pennsylvania where he studied theatre. New Stage credits include *One Man, Two Guvnors*, *All The Way* and *Peter Pan*, as well as *Gruesome Playground Injuries* for the Unframed Series. This summer he appeared in the Texas Shakespeare Festival's productions of *Macbeth*, *My Fair Lady*, *Cymbeline*, and the world premiere of *The Lost Prince*. Love to his family, especially his MS cousins! [www.patrick-moran.com](http://www.patrick-moran.com)

**VALENCIA PROCTOR** (Acting Intern), a Jackson native, is a graduate student of Mississippi College studying Marriage and Family Therapy Program. She has a love for people and the arts and hopes to continue sharing that love in theatres all over the nation. Additionally, she would like to explore teaching a Theatric Therapy course for adolescents.



**"Like us" on Facebook and follow us on Twitter**  
to get updates on events, casting, and more!

## ACKNOWLEDGEMENTS

The staff of New Stage Theatre wishes to thank the following individuals and companies for the generous donation of time and resources to this production and the 49th season.

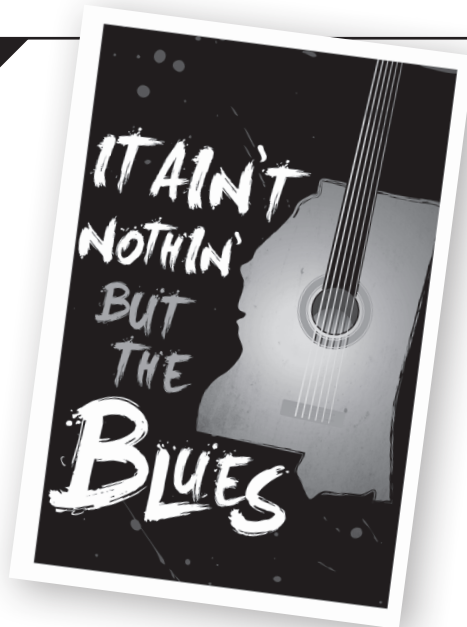
Special Thanks to The ALS Association of LA-MS Chapter. Help create a world without ALS!

Allegrezza Piano Company  
Caleb Blackwell  
Dr. Royce Boyer  
Julie Faul  
Patricia Faul  
Fernandez Creative Services

Hind's County Sheriff's  
Department  
HomeCare Plus, Inc.  
Lauren Kalka  
Debra McIntosh,  
Millsaps College

Brandi Nickles, ALS Asso-  
ciation LA-MS Chapter  
Andrew Prince  
Lawrence Raybon  
Marvin L. "Sonny" White

COMING  
NEXT



By Charles Bevel, Lita Gaithers, Randal Myler,  
Ron Taylor and Dan Wheetman

Based on an original idea by Ron Taylor

Directed by Peppy Biddy

**May 26 – June 7, 2015**

From African chants and Delta spirituals to the urban electricity of a Chicago nightclub, from dusty back roads bluegrass to the twang of a country juke joint, *It Ain't Nothin' But the Blues* is a stirring retrospective of blues classics that summons the soul of American music. Over two dozen musical numbers are included, among them *I'm Your Hoochie-Coochie Man*; *Goodnight, Irene*; *Fever*; *Walkin' After Midnight*; *The Thrill Is Gone* and *Let the Good Times Roll*.



## STOP KISS

By Diana Son

May 1, 2, & 3, 2015 at 7:30 p.m.  
Warehouse Theatre – 1000 Monroe Street

Tickets \$7 cash/check at the door only

Sara and Callie, friends-turned-lovers, suffer a vicious attack following their first kiss in this touching drama about love, relationships, homophobia, and the depths of human compassion. A bittersweet and enchantingly sincere play. Throughout *Stop Kiss*, relationships are explored, formed, and even ended. Diana Son elaborates on the depths of human emotion and compassion in this play. *Stop Kiss* contains mature content and language.

## NEW STAGE THEATRE BOARD OF TRUSTEES

### Executive Committee

Bill Osborne, President  
Pat Krakos, Vice President  
Ron Applewhite, Treasurer  
Stacey Gaines, Secretary  
Barbara Austin\*  
Bill McCarty III\*  
Crane Kipp  
Thad McLaurin

### Members

Warwick Alley  
Patti Carr Black\*  
Katie Blount  
Nadia Bodie-Smith  
Nicole Bradshaw

Tammye Brown  
Kay Fort Child\*  
James K. Child, Jr.\*  
Mike Cockrell  
Sid Davis  
Ali Dinkins  
Johnny Donaldson  
Lea Easley  
Bill Grothe  
Kelly Haber  
Susan Hart  
Lauren Kalka  
Robert Lesley  
Virgi Lindsay  
Joe Morris  
Rebecca Patton

Brad Reeves  
Julius M. Ridgway, Jr.  
Kathryn Rodenmeyer  
John Sewell  
Shirley Simpson\*  
Dorothy B. Stokes  
Bean Sulser  
Jimmie Sweat  
Linda Tanaka  
Ronnie Tubertini  
Elizabeth Turley  
Sam Walker  
Ginger Whitwell  
Michael Williams

\*Lifetime Member



## Help New Stage Go Green!

Programs can be great souvenirs, but if you are not taking yours home please help New Stage by placing it in the recycle bin in the lobby near the box office. We thank you for your help!



# 2014-2015 SEASON CONTRIBUTORS

It all begins here. The following individuals, corporations and foundations have made generous contributions to New Stage Theatre. Their gifts provide a major portion of the funding necessary to present the productions you enjoy on our stages, the educational programs we offer and help the theatre maintain its standing as one of the nation's best professional regional theatres. Please take a moment to read the list. They deserve your recognition.

## GRAND BENEFACTORS \$2500 +

John Bower  
Ann Anderson  
Barbara Austin  
Roy and Beth Harris in honor of Bill  
McCarthy III  
Susan and Macy Hart  
Beth Henley  
C.C. Henley  
Bill McCarthy III  
Jan and Billy Mounser  
Charles and Shirley Simpson  
Kayo Sykes  
Leila Clark Wynn  
Wirt and Mary Yerger

## BENEFACTORS \$1000-\$2499

Gayle and Holmes Adams  
Reuben V. and Phyllis Anderson  
Bank Plus  
Fred and Pamela Banks  
Chad and Leigh Bridges  
Dawn and David Buck  
Jean B. Butler  
Pat Derian and Hodding Carter III  
Jim and Sibyl Child  
Mike Cockrell and Scott Jennings  
Sid and Kathy Davis  
T.H. Etheridge Trust  
John Gaudet  
Winifred Green  
Lester and Ellen Hailey  
Carolyn (Cookie) Hughes  
Pat and Rod Krakos  
Virgi and Chuck Lindsay  
Dick and Bette Mason  
Mr. and Mrs. Thad McLaurin  
Michael McRee  
Dick Molpus  
Bill and Susan Osborne  
Alice Paysinger  
Francine Reynolds  
Julius and Stephanie Ridgway  
Jo Ann Robinson and Bill Ford  
Campbell  
Glenn and Jan Roebuck  
Flo and Howard Stover  
Floyd and Bean Sulser  
G. Javier Tanaka and Family  
The Tanaka Girls  
Jimmy and Kathie Young

## ARCHANGELS \$500-\$999

William and Joy Aden  
David and Virginia Allen  
Betty and John Allin  
Alex and Sarah Jane Alston  
Ruth and Carl Black  
David and Katie Blount  
Bo and Mary Helen Bowen  
Nicole and Brian Bradshaw  
Katie and Kim Breese  
Jean Turner Brewer

Charles and Jane Bryan  
Peter and Mireille DeBeukelaer  
John and Ali Dinkins  
Kane and Betsy Ditto  
Terry Dwyer and Marcy Petrini  
Joyce Franklin  
William and Esther French  
Ernest and Stacey Gaines  
Robert and Debra Gibbs  
Jim and Lynn Grenfell  
Bill and Susan Grothe  
Caroline and Reed Hogan  
Michael and Mary Jabaley  
Justice and Mrs. Jim Kitchens  
Robert and Lynda Lesley  
Morris and Judy Luke  
Kathy Mahloch  
John and Carol Mahoney  
Richard McRae  
Gloria Miller  
Millsaps College Departments of  
History and Political Science  
Joe Morris  
Beth and Steve Orlansky  
Janet and Luther Ott  
George and Carol Penick  
Don and Becky Potts  
Fred A. Powell  
Larry Rigby  
Dr. Dorothy Boyd Stokes  
Mr. and Mrs. Jerry M. Sullivan, Jr.  
Russell and Betsy Turley  
Jere Nash and Holly Wagner  
Sam and Vern Walker  
Mrs. Virginia and Dr. Sarah Webb  
Kathryn Wiener  
Michael and Stacy Williams  
Mark and Ashley Willson

## ANGELS \$300-\$499

Melissa and Ron Applewhite  
Dr. Carroll R. Ball  
Richard and Martha Blount  
Dr. Royce and Sherry Castle Boyer  
Thorne and Kelly Butler  
Dr. Joy Byrd  
Jeanne Luckett and C.B. Carroll  
Stan and Stephanie Chapman  
J. Gordon and Sara H. Christy  
Gary and Becky Conley  
Bill and Myra Cook  
Suman and Roslyn Das  
Emily and Jimmy Dossett  
Wayne and Ouida Drinkwater  
Early and Kay Ewing  
Kathy Flynt  
Tina Fortenberry  
Lawrence and Kelly Haber  
Julie Hendrick  
Jim and Beverly Herring  
Dudley and Robbie Hughes  
Tim and Kelly Irby  
Susan and William Jeanes

Lauren and Robert Kalka  
Harriet D. Kuykendall  
Lantz and Susan Kuykendall  
Doug and Jan Lemon  
Sally McDavid  
Anonymous  
Dennis and Madeline Mobley  
Stephen Oshinsky  
Joan Parsons  
Dr. Rebecca Patton  
Sam and Debbie Peeples  
Brad and Margaret Pigott  
Franceska and Melvin Roland  
Avery and Jacque Rollins  
Tommy and Ann Rueff  
Jim and Susan Sherman  
Richard and Susan Slaymaker  
Charlotte and Bill Waller, Jr.  
Bill and Cecile Wardlaw  
Tommy and Susan Weems  
Jon Wenberg  
Donny and Mary Alice White  
Auvergne and Maragret Williams  
Bonnie Wilson  
Willard and Margaret Wood  
Sam and Cindy Wright  
Vick Wyatt  
Steve and Chris Zachow

## PATRONS \$100-\$299

Chuck Addington  
Jerry P. Agent  
Risa Aleithawe  
David and Pam Allen  
Katherine L. Anderson  
Breland Applewhite  
Edward Balthrop  
Jim Barfield  
Brent and Christine Barron  
Jim Becker  
Steve and Lenora Bigler  
Patti Carr Black  
Ron and Ann Blackwood  
Nadia Bodie-Smith  
Kay and Steve Boone  
Janet and Harry Boswell  
David R. Bowen  
Ray and Jayne Britt  
Col. (ret) and Mrs. R.K. Broerman  
Dr. Yvonne B. Brooks  
Dr. Emma Brooks-Smith  
Henry and Mary Jane Burge  
L. Ivan Burghard  
Mr. and Mrs. Glen Bush  
Wanda Garner and Larry Butts  
Lloyd and Louise Chatham  
David Chew  
Tom and Peggy Coleman  
Myrna Colley-Lee  
John and Barbara Collier  
Frank and Betty Collins  
Martha Cooke  
Evelyn Copeland

Lawrence Cox  
 Tom and Cathy Crockett  
 Patricia and David Crosby  
 Bennie and Betsy Daniels  
 Barbara Dearman  
 Jenifer and Mark Dendinger  
 Anna and CT Dexter  
 Art and Gail Doty  
 Larry and Linda Dukes  
 Tom and Gretel Ekbaum  
 Janis H. Erikson  
 Rusty and Val Ethridge  
 Barbara Fisch  
 Pat and Martha Flaherty  
 William Fortenberry  
 Dickens Q. Fournet  
 Cecil Fox, Jr.  
 John and Marianne Gaudin  
 Nola K. Gibson  
 Jimmie Ray Gordon  
 Bob and Alice Gorman  
 E.H. and Wren Gregory  
 Dr. and Mrs. Lawrence Haber  
 Linda Hadala  
 Carter and Jackie Haines  
 Denise Halbach  
 David and Linda Harrison  
 Ellis and Reva Hart  
 Roger and Peggy Hastings  
 Kaye Herring  
 George and Caroline Hoff  
 Mrs. Taylor Holland, Jr.  
 Tommy and Ellen Hontzas  
 Anonymous  
 Anonymous  
 Charles and Ellen Johnson  
 Judith C. Jones  
 Jim and Jona Keeton  
 Ed and Dottie Kerstine  
 Dr. Diane Beebe and Mr. Bill King  
 Edwin King  
 Ted and Linda King  
 Walter and Monika Knepper  
 Phil and Mary Kuhn  
 Judy Lacy  
 James and Joyce Lane  
 Todd and Tricia Lawson  
 Bob and Lynn Lee  
 Anonymous  
 Diane and Robert Maddux  
 Laura Magee  
 Janie and Steve Maloney  
 Grace Marsh  
 Dan and Marianna Martin  
 Milton Matthews  
 Anonymous  
 Harold and Marie Mayer  
 Glenn and Ramona Mayeax  
 Natalie Maynor  
 Larry Maze  
 Jane Woosley and Patrick McAllister  
 Gerald and Kathryn McCormick  
 Steve and Clarisse McDonald  
 H. Thomas McWilliams  
 Gene and Donna Miller  
 Don and Mary Sue Mitchell

Fred Morris III  
 Hollidae Morrison  
 Sam and Margaret Morse  
 Ginnie and Luther Munford  
 Jason and Susan Murphy  
 Ronnie and Melody Musgrove  
 Joan Myers  
 Kevin and Mandy Kate Myers  
 Mrs. Helen Napier  
 Phil and Sarah Nelson  
 Ted and Donna Orkin  
 David and Shirley Orlansky  
 Frank U. Parent  
 Lee and Lisa Paris  
 James A. Peden, Jr.  
 Mr. and Mrs. William Pendergrass  
 Mark Mays and Laura Pentecost  
 Susan Pinkston  
 Seymour and Maggie Pooley  
 Barbara and Barry Powell  
 Power APAC  
 Dean Miller and Peggy Prenshaw  
 Carol Puckett  
 Nate and Malaika Quarterman  
 Tom and Sharon Rhoden  
 Jim and Betty Roberson  
 Bob and Darlene Roberts  
 Brenda Roberts  
 David C. Robertson  
 Jimmy and Linda Robertson  
 Joe and Pat Robertson  
 E.B. Robinson, Jr.  
 Ron and Kathryn Rodenmeyer  
 Martha J. Rogers  
 Sandra Rogers  
 Russell and Lele Rooks  
 Veronica Ross  
 Steve and Jeanne Rozman  
 Richard and Cheryl Rula  
 Howard and Midge Samsel  
 Sherry Sanderson  
 Tom and Joyce Sanford  
 Pat and Carlene Scanlon  
 Ada M. Seltzer  
 Ray and Dardanella Shenefelt  
 Peter Sittler  
 Elise Smith  
 Lottie Lee Smith  
 McKamy and Martha Smith  
 John and Jeannette Sobotka  
 Kathy D. Sones  
 Don and Joyce Sparks  
 Clyde and Maureen Staley  
 J. Paul and Merry Ellen Stockwell  
 Forrest and Ruth Stringfellow  
 Liza and Jack Sullivan  
 Robert and Regenia Sulton  
 Carol Taff  
 Ruth Tant  
 Drs. Herman and Jasmine Taylor  
 Mary and Chico Taylor  
 Sandy and Mac Temple  
 Jerry and Rosemary Thomas  
 Worth Thomas  
 Greg Thompson  
 Marcus Treadway

Jeff and Mona Trotter  
 Dr. Aaron Trubman  
 Jon and Melanie Twiss  
 Al and Laura Underwood  
 Marjorie Underwood  
 Alec and Kay Valentine  
 Ed Van Cleef  
 Paul Vanderberry  
 Jimmy and Becky Vickery  
 Gloria Walker  
 John and Judy Waskom  
 Jane Weathersby  
 LTC and Mrs. Benjamin H. Wesley  
 Teresa Westbrook  
 Robert and Allene Wickman  
 Jay Wiener  
 David and Michelle Williams  
 Hibernia Williams  
 Pam and Richard Williams  
 Dr. and Mrs. Louis J. Wise  
 Dick Johnson and Margaret Wodetzki  
 Betty Wong  
 Mary C. Workman  
 Julia S. Yandell  
 Julia Marks Young

#### CONTRIBUTORS \$50-\$99

Joe and Gail Buzhardt  
 Bill and Beverly Hoge  
 Larry and Jacque Keltner  
 Lorraine Middleton  
 Mack and Carol Sorrell  
 Zach and Jan Taylor

#### Gifts have been made in honor of:

Katie and David Blount in honor of  
 Barbara Austin  
 Dawn and David Buck in honor of  
 Barbara Austin  
 Kelly and Lawrence Haber in honor of  
 Dawn Buck, Ali Dinkins and Barbara Austin  
 Barbara Martin in honor of Dawn Buck  
 Modena Martin in honor of Dawn Buck  
 Vaughan and Nora Frances McRae in  
 honor of The Lindsay Family  
 Mary and Chico Taylor in honor of  
 Sibyl and Jim Child  
 Lynda Wright in honor of Barbara Austin

#### Gifts have been made in memory of:

Barbara Austin in memory of Karen McCann  
 Bill McCarty III in memory of Karen McCann  
 Bill McCarty III in memory of Rosia Wade Crisler  
 Ann Anderson in memory of John F. Anderson, Jr.  
 Dotsy Peel and Celeste Eason in memory of Tom Austin

## HOW CAN YOU HELP?

Without the support of people like you, there simply would not be a New Stage Theatre. We welcome your help. Whether it is in the form of a tax-deductible contribution or a product of service, every gift is deeply appreciated and recognized.

If you would like to contribute, contact New Stage Theatre, P.O. Box 4792, Jackson, MS 39296-4792, (601) 948-3533.

## Sponsors

Our Season sponsors provide funding that makes it possible for us to achieve artistic excellence. We salute our 2014-2015 season sponsors, and we encourage you to patronize these businesses.



**SAM E. AND BURNICE C. WITTEL FOUNDATION**

New Stage programming is made possible with the support of:



**Charles and Shirley Simpson**

**MEYER AND GENEVIEVE  
FALK ENDOWMENT FOR  
CULTURE AND ARTS**

*The Walker Foundation*

**THE CHISHOLM FOUNDATION**

**SELBY AND RICHARD MCRAE FOUNDATION**

## NEW STAGE *Theatre*

THE JANE REID PETTY THEATRE CENTER  
1100 Cantile • Jackson, Mississippi 39202

### BOX OFFICE HOURS

Monday-Friday: 10:00 a.m. – 5:00 p.m.

*During performances, the box office  
will remain open until 7:30 p.m.*

Saturday: 4:00 p.m. – 7:30 p.m.

Sunday: 1:00 p.m. – 3:00 p.m.

*Saturday and Sunday hours only apply  
during the run of a show.*

### TELEPHONE/WEBSITE

Main Number: (601) 948-3533

Box Office: ext. 222

Artistic Director: ext. 224

Managing Director: ext. 246

Marketing Director: ext. 226

Education Director: ext. 232

Website: [www.newstagetheatre.com](http://www.newstagetheatre.com)

Email: [mail@newstagetheatre.com](mailto:mail@newstagetheatre.com)

New Stage Theatre is a Constituent of Theatre Communication Group (TCG),  
the national organization for the American theatre.