



NEWSTAGEED

December 2025/January 2026

Disney
FROZEN
THE BROADWAY MUSICAL
Study Guide

Music and Lyrics by
Kristen Anderson-Lopez
and Robert Lopez

Book by Jennifer Lee



NEW STAGE
Theatre

newstagetheatre.com/educate



1100 Carlisle
Jackson, Mississippi 39202



What's inside

03	Audience Etiquette
04	The Cast
05	The Creative Team
08	Pre-Show Discussion
09	History & Context
10	Words and Phrases
11	Activities
13	Post-Show Discussion
14	Evaluation Forms
16	About New Stage Theatre
18	Field Trips to New Stage



Based on the 2013 Disney film that became a cultural phenomenon, *Frozen* tells the powerful tale of two royal sisters, Elsa and Anna, whose love for each other is tested by fear, self-discovery, and the forces of nature. When Elsa's magical powers accidentally plunge the kingdom of Arendelle into eternal winter, Anna sets off on a perilous journey—joined by rugged mountain man Kristoff, his reindeer Sven, and the lovable snowman Olaf—to bring back summer and mend the bond with her sister.

Music and Lyrics by Kristen Anderson-Lopez and Robert Lopez;
Book by Jennifer Lee



Audience Etiquette



For many of your students, *Disney's Frozen: The Broadway Musical* may be their first theatre experience. It may be helpful to discuss with them the expected behavior of an audience. New Stage asks that prior to the performance, students are made aware of the following:

- Stay with your group at all times and pay attention to your teachers and chaperones.
- Be sure to go to the bathroom before the performance begins. It is hard to leave once the performance begins.
- Make yourself comfortable while keeping movement to a minimum.
- Please do not stand up, walk around or put your feet on the seat in front of you.
- Absolutely no gum chewing, eating or drinking in the theatre.

Noise

Live theatre means live actors who can hear not only what is happening on the stage, but in the audience as well. While laughter and applause at appropriate time are appreciated by the actors, excessive noise and talking is not. Even whispering voices can be distracting to the actors and others in the audience.

- Do not talk during the performance.
- Cell phones are prohibited in the theatre. If you have one turn it off and put it away and do not bring it out during the performance.

Applause

Applause is used to acknowledge the performers and to voice appreciation or approval. Traditionally, applause comes before intermission and during curtain call which happens at the end of a performance when the cast returns to the stage for bows.

The Cast



AMELIE BAQUIE
Young Elsa



AUDREY CURLEY
Young Elsa



PIPER ROBERSON
Young Anna



EDITH WELCH
Young Anna



LAUREN PARKINSON
Anna



MICHAELA MOORE
Elsa



STEPHEN BLAUCH
Kristoff



SETH RODIVICH
Weselton



PATRICK JOHN MORAN
Olaf



AARON CASTLE
Hans



MICHAELA WILLIAMS
Bulda



DREW STARK
Oaken



BLAINE CLEVELAND
King Agnarr



HANNAH NEVILLE
Queen Iduna



MICHAEL KINSLOW
Sven



SLADE HANEY
Pabbie

Additional Cast

CAMERON VIPPERMAN (Ensemble/Anna U.S.), HANNAH BETH ROLLMAN (Ensemble/Queen U.S.), WYATT WILSON (Ensemble), SAM LOVORN (Hans U.S./King Agnarr U.S./Male Swing), JAYLA M. LOMAX (Ensemble), MANDY KATE MYERS (Ensemble), NEILL KELLY (Ensemble/Oaken U.S.), TARVORIUS K. HOUSE (Ensemble/Weselton U.S./Sven U.S.), AUDREY HOLT (Female Swing), SLADE HANEY (Ensemble/Kristoff U.S.), KYMBRIANNA GRIGGS (Ensemble/Bulda U.S./Assistant Wig and Hair Designer), LEE FORTNER (Ensemble/Olaf U.S.), BAXTER EVANS III (Male Swing), KAMEREN BATTY (Pabbie U.S.), and BENTLEY BARTON (Elsa U.S.)

The Creative Team

behind *Disney's Frozen: The Broadway Musical*

PEPPY BIDDY (Director) is returns to New Stage Theatre having directed last season's *Million Dollar Quartet Christmas*. He is a professor emeritus of Mississippi University for Women where he served 31 years and directed over 40 productions. During his tenure at "The W", Biddy received the Kossen Award for Faculty Excellence, the Lowndes County Educator of the Year Award, IHL's HEADWAE award, and The Cowboy Maloney Award by the Mississippi Theatre Association, its highest honor, for outstanding contribution to theatre arts in the state. Biddy earned his MFA in theatre at Trinity University (San Antonio, TX) and has worked as either actor, director, or stage manager at such companies as Dallas Theatre Center, Dallas Summer Musicals, Casa Manana (Ft. Worth, TX), Dallas Children's Theatre, and Mill Mountain Theatre (Roanoke, VA). Biddy is a member of Actors' Equity Association. He served as the production manager for Sundance Institute's Theatre Lab 2001-2017. New Stage audiences may have seen Biddy in the roles of Robert in *Boeing-Boeing* and Wilber in *Hairspray*, where he has also directed several plays and musicals including *ELF The Musical*, *CLUE*, *Murder on the Orient Express*, *Little Shop of Horrors*, *A Christmas Carol*, *The 39 Steps*, *Smokey Joe's Café*, *Ain't Misbehavin'*, *The Marvelous Wonderettes*, *The Foreigner*, *Shrek: The Musical*, *The Robber Bridegroom*, *Vanya, Sonia, Masha, and Spike*, and *Sister Act*.

CAROL JOY SPARKMAN (Music Director) is excited to return to New Stage Theatre as Music Director for *Frozen, The Broadway Musical*. Sparkman began her career on the music faculty at Mississippi College and holds both a Bachelor of Music Education in piano and a Master of Music in vocal coaching and accompanying. She is Co-Director of choral music at Clinton High School, directs award-winning choirs and a cappella ensembles, and serves as Music Director at Beth Israel Congregation. A sought-after collaborative pianist, she performs with choirs and soloists throughout the region. She currently serves as Southern Region ACDA Repertoire & Resources Chair for Contemporary and Commercial Music and has held leadership roles with the A Cappella Education Association and Mississippi ACDA. At New Stage, Sparkman has music-directed the annual New Stage Benefit, *ELF the Musical*, *The Sound of Music*, *Little Shop of Horrors*, and *9 to 5: The Musical*, and many others. She is delighted to bring the music of Arendelle to life.

XERRON X. MINGO (Choreographer/Education Director) is a graduate of Florida A&M University. Born and raised in St. Thomas, Virgin Islands. While living in New York City, he worked as a health & safety manager for Apple TV and HGTV productions. He also worked as a testing secretary and production coordinator for television shows with LIONSGATE and Apple Music Reviews. For the past ten summers, Mingo has worked at Raquette Lake Camps teaching musical theatre to students from all across the world. Mingo could not be more blessed to continue teaching, coaching, and mentoring in his third season as Education Director at New Stage Theatre. During New Stage's 58th season on our mainstage, he directed *Chicken & Biscuits* and *Sister Act, Jr.* Mingo also directed the touring productions of *Junie B. Jones, The Musical*, *Anne & Emmett*, and *Blues for an Alabama Sky* (Unframed). Mingo played the Macy's Store Manager in *ELF The Musical* and served as the choreographer for the production. He also directed *Mean Girls, Jr.* and played the role of Gabriel in *Fences*. Mingo also played the role of Fezziwig in *A Christmas Carol* at New Stage in 2021. He has worked professionally at a plethora of regional theaters in a handful of states. Mingo continues to live in the light and encourages everyone else to do the same.

Creative Team continued...

PROF. BRADEN GRAVES (Scenic/Projections Designer) is a scenic and lighting designer, and theatre educator. He currently serves as an assistant professor of theatre at Belhaven University, where he teaches design and production and serves as faculty scenic and lighting designer. Originally from Prineville, Oregon, Braden earned his B.A. in theatre from George Fox University, where he designed for Broadway Rose Theatre Company and served as technical director for Woodburn High School. He completed his MFA in scenic design at The Ohio State University, creating work for Actors Theatre Columbus, The Sound Company, Opera Project Columbus, and The Contemporary Theatre Co. He also worked as a designer and fabricator for Curtis Elliott Design Ltd. At New Stage Theatre, Braden has designed scenery for **Beautiful: The Carole King Musical**, **Million Dollar Quartet Christmas**, **The Mountaintop**, and **Come From Away**. He also served as a lighting designer for **ELF The Musical**. Also in Mississippi, he has designed for the University of Southern Mississippi and recently collaborated with the Mississippi Museum of Art on the installation of Taking Flight. His designs have been recognized by KCACTF, USITT (Ohio Valley), and SETC, and he was featured in the 2023 USITT Emerging Artist Showcase at the National Conference in St. Louis.

ANNALISE V. CAUDLE (Lighting Designer) is a lighting designer based in Oxford, Miss., but originally from DeSoto, Texas. Some of her regional design credits include: **Every Brilliant Thing** (Florida Rep), **The Music of Andrew Lloyd Webber**, **Bye Bye Birdie** (Maine State Music Theatre), **Rep Lab** (Milwaukee Rep), and **Elephant and Piggie** (ZACH Theatre). Some of her regional assistant lighting design credits include **Disney's Beauty and the Beast** (Paramount Theatre), **Winter's Tale** (The Goodman Theatre), **Things I Know to be True**, **The Chinese Lady**, **In the Heights** (Milwaukee Rep). annalisecaudle.com

ARYANA GAINES (Costume Designer) is a costume designer and technician specializing in historical costume, dancewear, and contour garment construction. She recently served as a guest artist at Austin Peay State University, designing and constructing corsets for **Intimate Apparel** by Lynn Nottage and leading a workshop on corset draping. From 2021 to 2023, she was the resident draper at the Nashville Ballet, contributing to acclaimed productions such as **Un Ballo** and the nationally televised **Black Lucy and the Bard**. Aryana earned an MSc in contour fashion innovation from De Montfort University in Leicester, UK, where she won the prestigious Roadley Award for Sustainable Design, and a BFA in costume design and technology from the University of Mississippi (Ole Miss), where she designed **Legally Blonde: The Musical**. Her 2020 costume design for **Near/ Far: A Zoom Production** at Ole Miss was selected for the U.S. submission to the 2023 Prague Quadrennial. She also completed a costume stitching apprenticeship as part of Santa Fe Opera's award-winning 2022 summer season, including the world premiere of **M. Butterfly**.

RAKAELA THOMPSON (Properties Designer) is thrilled to be part of the Frozen design team. This is her debut as a prop designer. She was born and raised in Pearl, Mississippi. She recently finished a resident acting contract with Playhouse on the Square. Some notable roles of hers include Nurse Norma (**Waitress**), Shanita (**Skeleton Crew**), Brianna Jenkins (**Chicken and Biscuits**), and Harriet Tubman (**Freedom Train**). Additionally, she graduated with her BFA in theatre performance from the University of Southern Mississippi! To The Top!! She wants to thank her friends and family members who support her on this blessed journey!

THE ROCK SHOP (Olaf and Sven Puppet Design and Fabrication) are the brilliant puppet creators behind **Disney's Winnie the Pooh: The New Stage Adaptation!** They're delighted to share these handcrafted Olaf and Sven puppets with New Stage Theatre and congratulate the cast and crew on their success! To learn more about The Rock Shop's **Frozen** puppets, head to rockshopworkshop.com/frozen.

Creative Team continued...

Assistant Director

**Assistant Stage Manager/
Sound Assistant**

Technical Director

Assistant Technical Director

Production Stage Manager

**Sound Designer and Engineer/
Projections Engineer**

Costume Assistant/Lead Dresser

Interim Production Manager

Production Manager

Cameron Pitre

Anna Dunbar

Richard Lawrence

Antonio Juarez

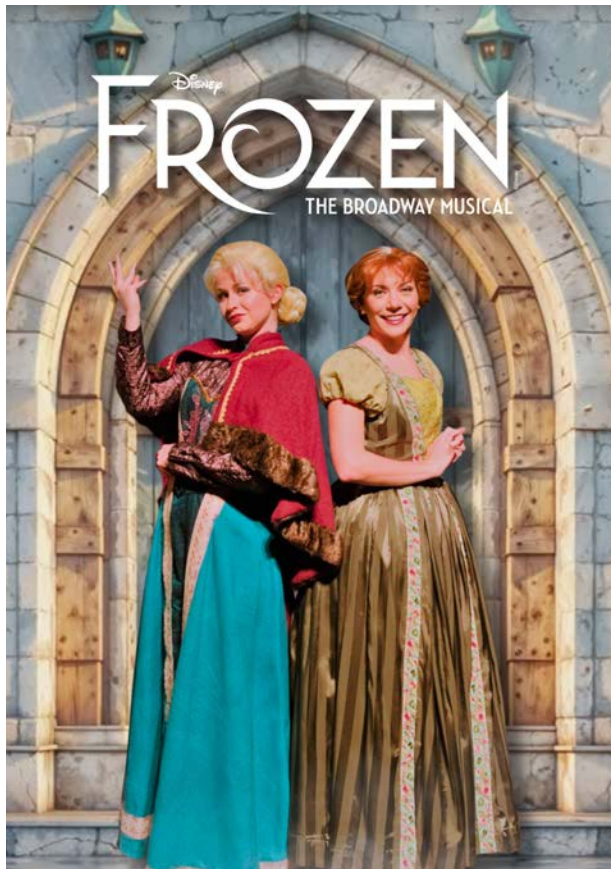
Rachel Boudreaux

Callie Jackson

Lamana Stringfellow

Mattea Pierce

Casey Nelms



Pre-Show Discussion

In the day or so before your field trip, share the following prompts with your students. You can read them aloud to your class or give each student a copy. When you return from the performance, review the list again. What do they remember noticing or thinking about during the performance?

Look for...

1. A royal orb and scepter. What occasion are they used for? What happens to them?
2. The seasons and weather changing. How do the costumes and set change to show this? How do you change what you wear for different seasons or weather?
3. The northern lights. Have you ever seen them in real life? Where in the world can you see them?



Listen for...

1. The sounds of trumpet fanfare. What does this signify? Who enters after this noise happens?
2. Animal noises. How many different animals are in the show? What animal sounds do you hear in Mississippi?
3. New songs and familiar songs. How were the songs that you already knew different or the same? How did the new songs add to the story?

Think about...

1. What does "hygge" mean to you? When do you feel coziest and most comfortable?
2. Anna is very brave during this story. When was a time that you were brave?
3. Anna and Elsa have a love that can thaw a frozen heart. Who is someone that you love?

History & Context



The Snow Queen by Hans Christian Andersen

Frozen is an original story, loosely based on Hans Christian Andersen's "The Snow Queen." Published in 1845, "The Snow Queen" begins when a magic mirror created by trolls shatters, causing pieces of it to lodge in the heart and eye of a boy named Kai. The mirror shards change Kai, and he leaves his home to go and live with the Snow Queen. His playmate, Gerda, goes in search of Kai and after many adventures she finds him. Her kisses melt the mirror-shards and free him from the queen. Since its publication, "The Snow Queen" has been adapted into numerous films, plays, operas and ballets. Disney's journey with the story began in the 1940s, when many of Andersen's fairy tales were being explored for animation. The project was ultimately shelved, though exploration continued in the 1970s for a Disneyland attraction called "The Enchanted Snow Palace", which didn't come to fruition. "The Snow Queen" began its transformation into *Frozen* in the early 2000s. While the final film departs from the original story, the theme of "regeneration through faith," its lead character's abilities, and a journey through mountains for reunification remain. "The Snow Queen" by Hans Christian Andersen inspired *Disney's Frozen* in several ways: Main characters: The main characters in *The Snow Queen* are Gerda and Kai, who are best friends and neighbors. In *Frozen*, these characters are transformed into sisters Anna and Elsa. Sven: The faithful reindeer who helps Gerda in "The Snow Queen" is similar to the character Sven in *Frozen*. Scandinavian kingdom: Both "The Snow Queen" and *Frozen* take place in Scandinavian kingdoms.

DIFFERENCES:

Frozen introduces new characters, including Olaf, the snowman, and Prince Hans.
Frozen changes the social class of the main characters from lowborn to royal.

Words and Phrases

Arandelle: A fictional Norwegian-inspired kingdom, and the birthplace of Anna and Elsa.

Coronation: A ceremony that marks the formal investiture of a monarch with regal power.

Dubious: Not to be relied upon or suspect.

Duke: A sovereign male ruler of a continental European duchy.

Dysfunctional: Not functioning properly.

Fjord: A long, narrow inlet of water that extends far inland and is created by glaciers.

Fondue: A dish of melted cheese and other ingredients served in a pot and eaten by dipping bread or other foods into it. The word "fondue" has been generalized to include other dishes where food is dipped into a communal pot of liquid.

Fractal: A geometric shape containing detailed structure at arbitrarily small scales.



Heir: The person who will take over the throne after the current monarch passes away.

Hidden Folk of the Mountain: Supernatural beings from Norse mythology that live in the rocks, hills, and lava fields of Iceland. They are also known as the Huldafólk, which means "the hidden people".

Hüldra: a Scandinavian word that refers to a seductive forest creature with an animal's tail and a hollowed-out tree back.

Na Na Na Heia Na: The opening lyrics in the show inspired by the traditional Sámi form of song called a joik.

Northhuldra: A fictional Indigenous group, who live within the Enchanted Forest, north of Arendelle, and are known as the "people of the sun". The Northhuldra people are inspired and based on the Sámi.

Pantomime: A type of musical comedy stage production designed for family entertainment.

Pageantry: An elaborate display or ceremony.

Sorcery: The use of magic, especially black magic.

Southern Isles: an unseen fictional Kingdom presumably located somewhere near or within the region of Denmark.

Tempest: A violent, windy storm.

Weselton: A fictional location considered to be south of the Southern Isles and further south from Arendelle and positioned in Denmark.

I'm Free

Connect with Elsa's feeling of strength & freedom in "Let it Go"

OBJECTIVES: Students will...

- Examine the lyrics of "Let it Go".
- Identify a personal strength.
- Write original lyrics based on a personal strength.

INTRODUCTION After fleeing Arendelle, Elsa yields her power to build an ice castle, a place she feels most free. The lyrics of "Let it Go", written by Kristen Anderson-Lopez and Robert Lopez, communicate the strength and freedom Elsa experiences after years of fearing the power within herself. By writing their own lyrics, students will explore the power of their own strengths.

WARM UP: LYRICS AS POETRY Write the following lyrics on the board:

"It's funny how some distance makes everything seem small And the fears that once controlled me can't get to me at all; It's time to see what I can do; To test the limits and break through; No right, no wrong, no rules for me; I'm free"

Read the lyrics aloud and ask the class to suggest what they might mean. Next, explain to the class that "Let it Go" celebrates the strength and power within Elsa that she's previously feared. Facilitate a brief discussion about lyrics being poetry set to music, often used in theater to tell a story. Ask the students what they notice about the language choices and rhyming structure in "Let it Go."

MAIN ACTIVITY: WRITE ORIGINAL LYRICS Explain that Elsa uses her power to build an ice castle. Ask each student to brainstorm an imaginary place they would build with their own personal power. Encourage students to choose a power based on a personal strength or personality trait of their choosing. Working in pairs, instruct students to take turns describing their places and their powers. While one student shares, the other should write a list of all the adjectives used to describe the place and all the verbs relating to the power. Then, have students use the lists as inspiration to individually write a verse of lyrics for their personal "Let it Go" moment. Invite students to share aloud and encourage students to celebrate each piece of writing; it takes a lot of strength to share original work!

REFLECTION Facilitate a brief discussion using the following prompts: • What are some similarities among the powers of our class? • What did you discover about the process of writing lyrics? • How would you react if you discovered your power was negatively impacting others? • How would you react if the place you built became threatened?

VARIATIONS OLDER STUDENTS: If you are working with older students, challenge the students to choose a personal strength that perhaps they once feared. In the main activity, encourage students to write a chorus in addition to a verse. In the reflection, ask students to identify a style of music for their composition. **YOUNGER STUDENTS:** If you are working with younger students, consider reducing the length of the lyric to a rhyming couplet. In the main activity, encourage students to first draw their imaginary place before brainstorming words to describe it. **HOMESCHOOL:** If you are working with a homeschool student, provide the option for the student to write original lyrics from the perspective of a friend or family they respect. In the main activity brainstorm, have your student identify a descriptor beginning with each letter of the alphabet.

Heartwarming Acts

"An act of true love will thaw a frozen heart."

Anna commits a true act of love to save Elsa, and Elsa shows her love for her sister to thaw her heart. In the heart below, draw or write acts of love that you've done for important people in your life or that other people have done for you.



Post-Show Discussion

The part of the show that grabbed my attention the most was

The show made me think about

Before seeing this show, I didn't know that

A question I have about the show is

If I were the director, one thing I would change is

One thing I saw during this show that I've never seen before was

After seeing the show, my friends and I talked about

Overall, the show made me feel

While watching the show, I had the strongest reaction to

Evaluation Form for Students

Name_____ Grade_____

School_____

1. What was your overall reaction to the play?
2. What was your reaction to the acting, singing and dancing?
3. What was your reaction to the scenery, costumes, etc. of the play?
4. What was your favorite part of the play?
5. Did you learn anything from this production? If so, what?
6. What other stories would you enjoy seeing staged by live actors?

Send us your feedback!

Please send you feedback and thoughts to us! Return form to:

New Stage Theatre, ATTN: Education Director, 1100 Carlisle Street, Jackson, MS 39202

Evaluation Form for Teachers/Leaders

Name _____

School _____ Grade Level _____

1. What was your overall reaction to the play?
2. What was your reaction to the acting, singing and dancing?
3. What was your reaction to the scenery, costumes, etc. of the play?
4. Please comment on the educational value of the play.
5. Do you feel this production was age appropriate for your students?
6. What titles or subjects would you like to see staged for student audiences?
6. Do you have other suggestions for future performances?

Send us your feedback!

Please send you feedback and thoughts to us! Return form to:

New Stage Theatre, ATTN: Education Director, 1100 Carlisle Street, Jackson, MS 39202

About New Stage Theatre

Winner of the 2019 Governor Arts Award for Excellence in Theatre, located in the heart of Jackson.



The Theatre

New Stage Theatre is located in Jackson, Mississippi. New Stage Theatre was chartered as a nonprofit organization in 1965 and produced its initial season in the winter and spring of 1966. New Stage's first home was an adapted church at the corner of Gallatin and Hooker Streets. The theatre produced 13 seasons in the 150-seat church before moving to its present site in Belhaven in 1978.

Built in 1963 for the Jackson Little Theatre, the 12,000 square foot structure includes the 364-seat Meyer Crystal Auditorium, and a flexible, smaller performing space, the Jimmy Hewes Room. The theatre also owns the five other structures on the site, four of which are used for actors' housing and one for offices. In 1997, the theatre complex was designated as the Jane Reid Petty Theatre Center in recognition of the New Stage founder's contributions to the development of professional theatre in Mississippi.



The Mission

The mission of New Stage Theatre is to provide professional theatre of the highest quality for the people of Mississippi and the southeast. New Stage is committed to producing important contemporary works and classics, selected for their artistic merit and their power to illuminate the human condition. Challenging new works in development are included through the Eudora Welty New Play Series named for the distinguished writer who helped found New Stage. New in recent years is The Mississippi Plays Series.

More about New Stage Theatre

The theatre is dedicated to cultivating and educating a culturally diverse audience by gathering the finest available resources including playwrights, actors, directors, designers, technicians, administrators, trainees, and board members. Integral to the theatre's total effort, New Stage's Education Department maximizes its impact within our surrounding community, through artistic and technical apprenticeships, which mount touring programs facilitated by our Apprentice Company, aided with classroom materials for schools statewide, and developing curricula for and instructing youth classes.



Mainstage Productions

New Stage produces five plays each year in its subscription series, in addition to a holiday show, an annual student matinee, and a musical theatre summer camp featuring local youth. Mainstage productions range from master works to contemporary classics to new plays. All productions carry the mark of professional quality for which the theatre has long been recognized. Additionally, New Stage has a second season called Unframed, overseen by Artistic Director Francine Reynolds and facilitated by our Apprentice Company and Education staff, that features contemporary works. New plays are read and developed through the Eudora Welty New Plays Series and the Mississippi Plays Series.



The Staff

The theatre staff is comprised of seven full time administrative and artistic staff members, six full time production staff members, four acting apprentices, and three part time employees. All actors are paid and typically one to two AEA actors are hired per production.

Upcoming Matinees

Attend our weekday season productions for a discounted ticket price. Performances are at 1 p.m. and admission includes a comprehensive study guide before the show and a post-show discussion with the company following the matinee.



To reserve seats call Mahri Mclean at 601.948.3533 ext. 226 Read more about each production at newstagetheatre.com!



Disney
FROZEN
THE BROADWAY MUSICAL