

Gaslight

By Steven Dietz
based on the original play by
Patrick Hamilton

Directed by
Francine Thomas Reynolds

Oct. 22 – Nov. 3, 2024

NEW STAGE
Theatre

Sponsored by



A gripping tale of
suspense where
every shadow
holds a secret.

Costume Designer
Ruth Dentel

Lighting/Sound Designer
Alberto Meza

Technical Director/
Co-Scenic Designer
Richard Lawrence

Production Stage Manager
Mattea Pierce

Properties Designer
Jenna Kahley

Co-Scenic Designer
Brent Lefavor

Production Manager
Casey Nelms

Fight Choreographer
Vern Allen

Gaslight

By Steven Dietz
based on the original play by
Patrick Hamilton

Gaslight

Gaslight is presented by arrangement with Concord Theatricals on behalf of Samuel French, Inc. www.concordtheatricals.com

Any video and/or audio recording of this production is strictly prohibited.

Recommended for ages 13+

Warning: the use of theatrical haze will be used in this production.

There will be one 15-minute intermission.

FROM THE PLAYWRIGHT: AN INTERVIEW WITH STEVEN DIETZ

WHAT WAS YOUR WRITING PROCESS LIKE? WHAT WAS THE GREATEST CHALLENGE IN ADAPTING GASLIGHT?

Like most of the well-known literature I've adapted, I read the source material twice: once for pleasure (letting myself be surprised); and once for narrative structure (how did the story manufacture those surprises?). Then I don't lift or open the source material again. I write towards the narrative "turns" that compelled me; I invent the others that I need. In this way, my voice can assert itself in tandem with the voice of the original.

Though very few people know the actual story, the title alone (in 2024) tells them what will happen. Therefore, the play – which likely began as a "What?" thriller (what is happening to her?) – becomes, in our day and age, a "How?" thriller: how will this woman break the psychological grip of her husband? My job was to situate the play's surprises in Bella's actions, not her dilemma.

WHAT DO YOU THINK THIS PLAY SAYS ABOUT TRUTH? WHAT DO YOU THINK IT SAYS ABOUT POWER?

Though I don't believe a play is trying to "say" anything, spending five years and counting with this story has taught me that personal "truth" is an invention. Although an outside observer (like the audience watching Bella) may have access to a sort of empirical truth, knowing what is "really" happening – the characters themselves are trapped within the life they have invented or that someone has invented for them. Jack's power is that he has invented Bella's truth. He will hold that power until Bella can overturn his invention.

HAMILTON WROTE GASLIGHT OVER 80 YEARS AGO. SINCE THEN, THE TERM "GASLIGHTING" HAS BECOME A PART OF THE ENGLISH LEXICON. MERRIAM-WEBSTER EVEN DUBBED "GASLIGHTING" THE WORD OF THE YEAR IN 2022. DO YOU THINK GASLIGHTING IS MORE PREVALENT IN THE 21ST CENTURY THAN IT WAS WHEN HAMILTON WAS WRITING? WHY OR WHY NOT?

History has shown us that once a condition is "named," it is perceived to be more common. I can't imagine what we now call "gaslighting" is any more common now than it was before Patrick Hamilton gave us a metaphorical signifier. If anything, I would guess the term is likely used now as a more general catch-all about "power," meant to encompass modes of behavior far removed from Hamilton's original intent.

Source: Merrimack Repertory Theatre; www.mrt.org | Patrick Hamilton's Gaslight A new version for the stage by Steven Dietz Study Guide. Study Guide by Allison Backus. Designed by Emily Boyer.



New Stage Theatre mourns the loss of
Laurence Buie Wells

1952 - 2024

Larry was born of August 2, 1952 in Natchez, Mississippi. Upon high school graduation, he attended Millsaps College and earned a BA in theater.

After several career endeavors, he returned to Millsaps College to join the staff as a research coordinator. Larry enjoyed his work at Millsaps as well as collecting books and World War I and World War II militaria. He also acted in numerous stage productions of the Jackson Little Theater, New Stage Theater and the Millsaps Players. Larry was recognized as model of professionalism and discipline for student actors as well as contributing his outstanding talent and acting skills. He felt a strong responsibility to be a role model for young actors.

Artistic Director Francine Thomas Reynolds says, "Larry Wells was such a big part of theatre in the Metro Jackson area and such a wonderful, talented member of the New Stage Theatre family. He will be missed by so many."

Larry's last appearance on our stage was in ***Murder on the Orient Express***. Before that he acted in the roles of Otto Frank in ***Diary of Anne Frank***, Sir de Lesseps in ***Shakespeare in Love***, Doc Gibbs in ***Our Town***, Ludwig van Beethoven in ***33 Variations***, Van Helsing in ***Dracula***, Pa Joad in ***The Grapes of Wrath***, Lyman Wyeth in ***Other Desert Cities***, and Judge Taylor in ***To Kill a Mockingbird*** just to name a few.

Our deepest condolences go out to Larry's loved ones. He will be missed on our stage.

SETTING

The late 1880's. New York City

THE CAST

Bella Manningham	Hannah Elizabeth Freeman*
Jack Manningham	Drew Stark
Elizabeth	Malaika Quarterman
Nancy	Marquita K. Levy
Sergeant Rough	Ward Emling
Police Officer	Keith Allen Davis [†] , Jacob Heuer [†]

UNDERSTUDIES

Understudies never substitute for listed performers unless a specific announcement is made at the time of the performance. For Bella Manningham: Ashlyn Pinkerton[†]; For Jack Manningham: Keith Allen Davis, Jr.[†]; For Elizabeth: Tatiana Grace[†]; For Nancy: Cameron Viperman[†]; For Sergeant Rough: Jacob Tate Heuer[†]

*Indicates member of the Actors' Equity Association

[†]Indicates Associate Artist

SO, WHAT IS GASLIGHTING?

Merriam-Webster defines the term gaslighting as follows: "Psychological manipulation of a person usually over an extended period of time that causes the victim to question the validity of their own thoughts, perception of reality, or memories and typically leads to confusion, loss of confidence and self-esteem, uncertainty of one's emotional or mental stability, and a dependency on the perpetrator."

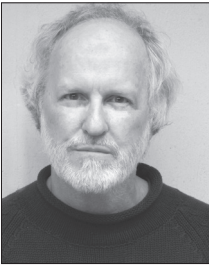


THE CAST



KEITH ALLEN DAVIS, JR.[†] (Police Officer/Jack Manningham U.S.) is an actor, writer, musician, and director from Meridian, Miss. He recently received his Bachelor of Arts in theatre arts at Alabama State University. During his time at ASU, he has been cast in and worked on productions such as *Dreamgirls*, *The Wiz*, *Tracks*, *Slammin II*, and *Blues for An Alabama Sky*. He has also written for and co-directed Montgomery, Alabama's performance for the worldwide festival of *The Walk* (Little Amal) in 2023. Since graduating, he was cast as Tim Allgood in *Noises Off* at

New Stage Theatre. He hopes to continue to use all the tools he has acquired from Alabama State to propel him successfully into his professional career.



WARD EMLING (Sergeant Rough) is a 1976 graduate of Millsaps College and trained at the Guildhall School of Music and Drama in London. Little Theatre of Jackson: *Jimmy Shine*, *A Funny Thing Happened on the Way to the Forum*. The Millsaps Players (under the direction of Lance Goss): *The Importance of Being Earnest*, *Hamlet*, *Robert and Elizabeth*, *Hotel Universe*, *The Lady's Not for Burning*. Mississippi Shakespeare Festival: *King Lear*. John Maxwell's *A Christmas Tale*. New Stage: *Peg O My Heart*, *The Little Foxes*, *As You Like It*, *The Pirates of Penzance*,

the folk opera *The Ponder Heart*, *Shakespeare in Love*, *The Diary of Anne Frank*, *Sweat*, *Murder on the Orient Express*, *A Christmas Carol*, *9 to 5*, *The Sound of Music*, and *The Secret Garden*.



HANNAH ELIZABETH FREEMAN* (Bella Manningham) is thrilled to make her New Stage debut! Selected Regional Credits: *Macbitches*, *The Wolves* (Unicorn Theatre); *9 to 5*, *The Kentucky Cycle*, *The Night of the Iguana*, *Parade* (Metropolitan Ensemble Theatre); *The Effect of Gamma Rays on Man-in-the-Moon Marigolds* (Kansas City Actors Theatre); *David Cromer's Our Town*, *A Christmas Carol*, *Carousel* (Kansas City Repertory Theatre); *The Fabulous Lipitones* (New Theatre & Restaurant); *Cinderella* (Theatre for Young America). Freeman

is a proud AEA member. She sends her love to Robbie, Mom, Dad, JT, and Tillie! www.HannahElizabethFreeman.com



TATIANA GRACE† (Elizabeth U.S.) is thrilled to be a part of the team at New Stage Theatre! Originating from Georgia, she received her Bachelor of Fine Arts in theatre performance at Columbus State University in Columbus, GA. Her favorite past productions include *Stupid F**king Bird* (Mash), *Three Little Birds* (Cedella), *Into the Woods* (Jack's Mother), and *Lady Day at Emerson's Bar & Grill* (Billie Holiday). She would like to thank her friends, family, and professors who have helped and supported her along the way.



JACOB HEUER† (Police Officer/Sergeant Rough U.S.) graduated from the University of Mississippi with a BFA in acting for the stage and screen. In college, he starred in several UM Theatre productions, including performing as Mr. Mushnik in *Little Shop of Horrors*, The Baker in *Into the Woods*, G/Zeus in *Polaroid Stories*, Mr. Callahan in *Legally Blonde*, Robert in *Boeing Boeing*, and Mr. Laurence in *Little Women the Musical*. In the summer seasons of 2023 and 2024, he performed professionally as Ali Hakim in *Oklahoma!* and as Oliver Hix in *The Music Man* at the Gertrude C. Ford Center for the Performing Arts. Heuer has spent the last year working as an acting intern at the Florida Repertory Theatre in Fort Myers, Florida, and is looking forward to working with a new group of artists at New Stage Theatre.



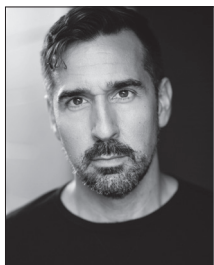
MARQUITA K. LEVY (Nancy) is excited to be returning to New Stage Theatre! She is a graduate of THEE Jackson State University, where she received her B.S. in mass communications. Levy last appeared at New Stage as Simone in *Chicken and Biscuits*. Additional New Stage credits include *Lend Me a Soprano*, *Clue*, *The Curious Incident of the Dog in the Night-time*, and several Unframed Productions. Levy would like to thank her family and friends for their continuous love & support.



ASHLYN PINKERTON† (Bella Manningham U.S.) is a 2024 graduate from Belhaven University with a B.A. in theatre performance. She was born and raised in Brandon, Mississippi. Her previous performance roles include *A Lovely Sunday for Creve Coeur* (Dorothea) and *Suite Surrender* (Murphy) at Belhaven University. She made her directing debut at Belhaven with her spaghetti western adaptation of *The Marriage Proposal* by Anton Chekhov. Pinkerton is pursuing a career in film acting and directing. She is thrilled to be a part of New Stage's team.



MALAIKA QUARTERMAN (Elizabeth) was last seen at New Stage in the productions of *Sweat*, *A Christmas Carol*, *Sister Act*, *Our Town*, *The Great Gatsby*, and *Annie*. She has had the privilege of choreographing New Stage's *Cabaret Rising Toward a New Day* and *Little Shop of Horrors*. She resides in Jackson with her wonderful family and is currently the lead arts teacher with Jackson Public Schools at Wells APAC. Quarterman enjoys serving on the board of Fondren Theatre Workshop and as the Chapter Director for Mississippi Thespians.



DREW STARK (Jack Manningham) is thrilled to return to New Stage after receiving his MFA in theatre at the University of Central Florida. A Mississippi native, he holds a B.A. from the College of William and Mary. Previous New Stage performance credits include: *Noises Off* (Garry Lejeune), *Beautiful: The Carole King Musical* (Don Kirschner), *The Secret Garden*, *Elf*, *Bright Star* (Daryl Ames), *Sweet Potato Queens* (George), *Murder in the Orient Express* (Michel), *The Diary of Anne Frank* (Mr. van Daan), *Shakespeare in Love* (Marlowe), and *33 Variations* (Mike). Regional credits include: *CATS*, *Legally Blonde*, *Joseph*, *42nd Street*, *Seven Brides for Seven Brothers* (Prather Productions), *Young Frankenstein*, *Damn Yankees*, *Annie* (Little Theatre on the Square), *Kinky Boots*, *Henry V*, *Henry VI*, *Part One: Joan of Arc*, *Christmas Carol*, *Charlotte's Web*, and the world premiere of *A Big Day for Baseball: A Magic Treehouse Adventure* (Orlando Shakes). Drew is a theatre educator and professional fight director/choreographer. Instagram: @drewstarkactor Website: drewstarkactor.com.



CAMERON VIPPERMAN[†] (Nancy U.S.) is excited to continue her journey of lifelong learning, creativity, and empathy-building with New Stage Theatre. Originally from Columbia, S.C., she is a graduate of Winthrop University's honors program with a Bachelor of Arts in theatre, concentrating in musical theatre and minoring in education. Some of her favorite performances include *Pippin* (Catherine), *The Wizard of Oz* (Dorothy), *Sweeney Todd* (Johanna), and *Romeo and Juliet* (Montague). She has performed professionally as a resident chorus member in three seasons with Opera Carolina. Some of her long-time passions are choral music, piano, musical theatre, history, songwriting, playwriting, summer camp, reading, and drinking coffee on porches. Some of her newer interests are Shakespeare, theatre for youth, vocal pedagogy, and weightlifting. She is so grateful to get to do what she loves as a profession. Micah 6:8

The logo consists of a speech bubble with the words "actor" and "chat" stacked vertically inside it. The bubble has a tail pointing towards the bottom left.

actor chat

Stay and meet the cast after *Gaslight* following the show on Wednesday, October 23 and Tuesday, October 29, after the evening performance. Audience members may ask questions of the actors, director and designers in an informal setting.

PRODUCTION TEAM

FRANCINE THOMAS REYNOLDS (Artistic Director/Director) has been the artistic director at New Stage since 2006 and has worked as a theatre artist for 37 years. She recently directed *Noises Off*, *Beautiful*, *The Carole King Musical*, *The Secret Garden*, *Every Brilliant Thing*, *The Sound of Music*, *The Curious Incident of the Dog in the Night Time*, *I Just Stopped By to See the Man*, *The Debate for Democracy*, *Pipeline*, *Bright Star*, *Hell in High Water*, *Sweat*, *Shakespeare in Love*, *Silent Sky*, and *Best of Enemies*. Favorite acting roles include Dr. Katherine Brandt in *33 Variations*, Polly in *Other Desert Cities*, Lucille in *Dividing the Estate*, and Edna Earle in Eudora Welty's *The Ponder Heart*. She has directed a variety of shows including *All The Way*, *The Whipping Man*, *The Grapes of Wrath*, *Our Town*, *Red*, *Who's Afraid of Virginia Woolf?*, *Hairspray*, *Mahalia: A Gospel Musical*, *The Great Gatsby*, *Lombardi*, *Boeing, Boeing*, *A Christmas Carol*, *Gee's Bend*, *A Raisin in the Sun*, *Annie*, *A Soldier's Play*, and *I Love You, You're Perfect, Now Change*. Reynolds is a 2022 recipient of a Directing Fellowship from the Mississippi Arts Commission. She served three terms on the board of directors for the Theatre Communications Group (TCG) and several terms on the Mississippi Theatre Association Board of Directors. Reynolds has served on grant panels for the National Endowment of the Arts and the Mississippi Arts Commission and has enjoyed adjudicating for Poetry Out Loud and the Southeastern Theatre Conference. She was a speaker for the 2021 Story State, www.storystate.msstate.edu, produced by Mississippi State University. Originally, from the Upper Peninsula of Michigan, Reynolds enjoys living in Jackson with her husband, Chuck.

BRENT LEFAVOR (Co-Scenic Designer) M.A., MFA, a professional director, and designer since 1976. He designed lights at Robert Redford's Sundance Theatre for 10 years; was a founding member, director, and designer for Walk-On's Inc. in Salt Lake City; and directed and designed at Grand Teton Mainstage theatre in Jackson Hole, Wyo. Lefavor moved to Mississippi in 1983 where he taught theater for 25 years at Millsaps College. During that time he designed sets and lights for more than 100 shows. Lefavor began as a guest artist at New Stage Theatre in 1998 with the lighting for *A Funny Thing Happened on the Way to the Forum*; he became a full-time staff member in 2009, where he continued for nine seasons. At New Stage he designed lights and sets, some favorites include: *33 Variations*, *Christmas Carol* (2013), *All My Sons*, *The Miracle Worker*, *Cat on a Hot Tin Roof*, *Smokey Joe's Café*, *Noises Off*, and *You're a Good Man Charlie Brown*. At New Stage he directed *Sherlock Holmes and the Adventure of the Suicide Club* and *Peter Pan*. My thanks to Francine and the staff for pulling me out of retirement.

RICHARD LAWRENCE (Co-Scenic Designer/Technical Director) serves as the parliamentarian of Fondren Theatre Workshop and has appeared in *A Christmas Memory* at New Stage, FTW's *The Rocky Horror Show*, *Buck Nekkid for Jesus*, directed FTW's *Every Christmas Story Ever Told*, and most recently appeared as Trekkie Monster in *Avenue Q*. He was also the director of the widely successful productions of *Cabaret* and *Company*, which were joint productions of FTW and Actor's Playhouse of Pearl, with support from New Stage. Lawrence has been seen in New Stage productions of *The Trip to Bountiful* and UnFramed's *The Eight: Reindeer Monologues*, *How I Learned to Drive*, *The Weir*, *Circle Mirror Transformation*, and *Dublin Carol*. Lawrence has won three Best Set awards at Mississippi Theatre Association conferences, and has also won Best Set at Southeastern Theatre Conference.

RUTH DENTEL (Costume Designer) is thrilled to be designing her first show at New Stage Theatre. She teaches courses in costume design and construction at Belhaven University and serves as the costume shop manager. Designs for Belhaven include *The Spoon River Project*, *Pride & Prejudice*, *The Wizard of Oz*, *Burial at Thebes*, *Suite Surrender*, and *Cinderella*. Her scope of work includes several shows designed in the Houston area. She has served as a technician for various theatres including shakespeare festivals, opera companies, musical theatre companies, and dance. Of note, she traveled 3 years with the National Broadway tour of *Phantom of the Opera* and spent several years with Houston Ballet. When not working on theatrical productions, Dentel is an avid traveler. To date, she has traveled to 6 of 7 continents and all 50 US states, visiting ethnographic museums and learning the nuances of varying cultures. She always takes her camera with her to capture the moments. If she has any time left over, she enjoys singing, baking cookies, drawing and painting.

MATTEA PIERCE (Production Stage Manager) is a graduate of Belhaven University with degrees in both theatre and graphic design. Past New Stage credits for Stage Management include: *Noises Off*, *Beautiful: The Carole King Musical*, *Lend Me a Soprano*, *What the Constitution Means to Me*, *Elf The Musical*, *The Secret Garden*, *Chicken & Biscuits*, and *Ring of Fire* (ASM). She is excited to be a part of New Stage's 59th Season – Your Place for Broadway Shows.

CASEY NELMS (Production Manager) is a proud Mississippian born and raised in Pearl, Miss. She received her Bachelor of social work from Belhaven University followed by her master's of social work from the University of Southern California. While living in Los Angeles, she transitioned from a robust therapy career to producing and supervising productions in the film industry. Nelms has been fortunate enough to work with companies such as Lionsgate, Patriot Pictures, and Convoke Media, as well as many others, and now happily serves as production manager at New Stage Theatre. She lives on the Ross Barnett Reservoir with her husband and their two droopy-faced beagles, Olive and Mabel.

NINA FROST (Costume Shop Supervisor) is from Jackson and is a graduate of Belhaven University with a B.A. in theatre. This is her third season with New Stage, but first as the costume shop manager. Previously, she worked as a stitcher and wardrobe supervisor on

several past shows including *CLUE*, *The Glass Menagerie*, *The Sound of Music*, *FENCES*, *Lend Me A Soprano*, *Elf: The Musical*, and *Beautiful: The Carole King Musical* among others. Some of her past credits include *The Wizard of Oz*, *Pride and Prejudice*, *Silent Sky* (Belhaven University), *She Loves Me*, *Mamma Mia!*, and *Almost, Maine* (New London Barn Playhouse). Frost's most recent credit was costume designer for the Unframed Series production of *The Grownups*, and also costume designed *Finding Nemo Kids* and *Sister Act, Jr.* this past summer. Enjoy the show!

VERN ALLEN (Assistant Director/Fight Choreographer) is a New York-based producer, director, writer, and stage manager originally born in Mississippi. He's directed and managed two touring shows, Theatre for Young Audiences, community theatre, and collegiate plays, the most recent being *All American Boys* by Jody Alperin and Vicky Crouch. He also served as second AD for Wes Miller's *A Day to Die* starring Bruce Willis and Dallas Jackson's *The System* starring Tyrese Gibson. Allen is an alumnus of Mississippi State University and the Mississippi School of the Arts, and remains a student of the game.

ALBERTO MEZA (Resident Sound Designer and Engineer/Lighting Designer/Company Liaison) is a graduate of Belhaven University with a BFA in theatre. He is from Brandon, Mississippi and is grateful to work in the only professional regional theatre in Mississippi. He began working with New Stage Theatre in 2020 and has continued to work in multiple positions over the recent years. Some of his regional design credits for both sound and projections include: *Pipeline*, *Little Shop of Horrors*, *A Christmas Carol*, *A Curious Incident of the Dog in the Nighttime*, *Clue*, *Every Brilliant Thing*, *Ring of Fire*, *Elf The Musical*, *Chicken and Biscuits*, and *Beautiful*. He worked with Belhaven University Theatre as their professional guest artist as the sound engineer/designer for their main stage productions, *Wizard of Oz*, *The Spitfire Grill*, and *Cinderella*. He is grateful for this opportunity to debut as a lighting designer for this production at New Stage Theatre. He recently had the opportunity to light design with Hinds CC on their show *Radium Girls* and was able to light design during his time at Belhaven University. These designs include *The Secret Garden*, and *Don Quixote*. Meza was the streamer and editor behind the *Thursday Night Virtual Plays*, *Conversations*, & *Cocktails* that was presented over the virtual season at New Stage Theatre.

JENNA KAHLEY (Properties Designer) is from Rockford, Ill. She has a Bachelor of Arts in theatre and a Bachelor of Fine Arts in creative writing from Belhaven University. She's previously worked for Gateway Playhouse in Bellport, NY.

MATTHEW MCMURTRY (Lead Electrician) is a recent graduate of Belhaven University. His recent work with New Stage includes *Every Brilliant Thing*, *The Glass Menagerie*, *Clue*, and *9 to 5: The Musical*. He served as the lighting designer for New Stage's summer camp productions of *Frog and Toad, Kids* and *Children of Eden, Jr.* McMurtry has also served as lighting designer for Belhaven University's productions of *Steel Magnolias* and *The Burial at Thebes*.

CREW

Assistant Director/Fight Choreographer	Vern Allen
Production Associate	Joey Ford
Production Assistant	Darby Frost
Construction	Ness Keogel
Costume Shop Supervisor	Nina Frost
Stitcher	Mahri McLean
Carpenters	Dave Ellis, Jimmy 'JR' Robertson
Running Crew	Keith Allen Davis, Jr. [†] , Jacob Heuer [†] , Ashlyn Pinkerton [†]
Light Board Operator	Tatiana Grace [†]
Sound Board Operator	Cameron Vipperman [†]
Scenic Charge Artist	Michael Montgomery
Company Liaison	Alberto Meza
Lead Electrician	Matthew McMurtry

[†]Indicates Associate Artist

THE ADMINISTRATIVE STAFF

DAWN BUCK (Managing Director) has worked on staff at New Stage for more than 20 years. She began her career at New Stage in the fall of 1981 as a box office assistant. Since that time, she has worked as box office manager, audience services director, house manager, bookkeeper, business manager and marketing director. Buck's other professional artistic credits include the USA International Ballet Competition, the Thalia Mara Arts International Foundation – World Performance Series presenting a series of performing artists including American Ballet Theatre, Aquila Theatre of London, Joshua Bell, Alvin Ailey, Cirque Eloize, Wynton Marsalis, and the Lincoln Center Jazz Orchestra. She attended Belhaven University and is an alumnus of Leadership Jackson and a graduate of Dale Carnegie. Buck also completed a residency on theatre management at the Eugene O'Neill Center through a grant from the Foundation for the Extension and Development of Professional American Theatre (FEDAPT). Prior to serving on the staff of the USA International Ballet Competition, she worked with America Reads - Mississippi overseeing and training 270 AmeriCorps members who provided one-on-one tutoring in reading for students in primary K through the 3rd grade across the state. Buck also worked with Imageworks - Films for Business, assisting with the production of commercials, documentaries and training videos. She resides in the Heatherwood neighborhood with her husband David and has two sons who live in the big "N" cities of New York and Nashville.

BILL MCCARTY III (General Manager), a graduate of the University of Mississippi, has extensive background in wholesale and retail sales and real estate property management with the Jitney Jungle supermarket chain. The company was founded by his Grandfather Will McCarty and two Holman cousins in 1919. The families grew the business into a profitable billion dollar Mississippi-based company led by Bill McCarty Jr, his father,

Henry Holman and many talented associates which sold in 1996. During his grocery career, Jack Stevens and Ivan Rider recruited Bill in 1973 to run a follow-spotlight for *The Gershwin Show* at the theatre's original Gallatin Street location. He has continued to volunteer with New Stage for more than 51 years in all areas including production, lighting and sound design, back-stage, and for New Stage fundraising events. He is involved in the day-to-day management, maintenance, and production for the theatre and serves on the Board of Trustees as a lifetime member. His favorite design credits are *A Christmas Carol* (1984), *Greater Tuna* (1986), *The Gin Game* (1987), and *A Streetcar Named Desire* (1990).

MELISSA TILLMAN (Director of Business Services) is a graduate of Belhaven University where she received a B.A. in technical theatre. She served as the audience services director and marketing director at New Stage, has worked as a box office associate at Lawlor Events Center in Reno, Nevada, and assisted with many box office activities at Belhaven University. Tillman has stage managed many shows in several parts of the country, including Las Vegas and Tennessee. Her stage managing credits include *Oklahoma!*, *Meet Me in St. Louis*, *The Wizard of Oz*, *Taming of the Shrew*, and *Love's Labours Lost*; and *Noye's Fludd* and *La Boheme* with the Mississippi Opera. This is Tillman's ninetieth season with New Stage. She currently resides in Madison with her husband, Kyle, their son, River, and their dog Vash.

XERRON MINGO (Education Director) is a graduate of Florida A&M University. Born and raised in St. Thomas, Virgin Islands. While living in New York City, he worked as a health & safety manager for Apple TV and HGTV productions. He also worked as a testing secretary and production coordinator for television shows with LIONSGATE and AppleMusic Reviews. For the past ten summers, Mingo has worked at Raquette Lake Camps teaching musical theatre to students from all across the world. Mingo could not be more blessed to continue teaching, coaching, and mentoring in his third season as Education Director at New Stage Theatre. During New Stage's 58th season on our mainstage, he directed *Chicken & Biscuits & Sister Act, Jr.* Mingo also directed the touring productions of *Junie B. Jones*, *The Musical*, *Anne & Emmett*, & *Blues for an Alabama Sky* (Unframed). Mingo played the Macy's Store Manager in *Elf, The Musical* and served as the choreographer for the production. He also directed *Mean Girls, Jr.* and played the role of Gabriel in *Fences*. Mingo also played the role of Fezziwig in *A Christmas Carol* at New Stage in 2021. He has worked professionally at a plethora of regional theaters in a handful of states. Mingo continues to live in the light and encourages everyone else to do the same.

JERIANNA SHAW (Marketing Director) is a graduate of Mississippi State University where she received a B.A. in communication studies. This is her final show with New Stage Theatre as the marketing director. She would like to thank Dawn Buck, Bill McCarty III, Melissa Tillman, and Francine Thomas Reynold for making "the other side" so great. You can find Shaw slinging pizzas at her family's restaurant around the corner at Poppy Pies in the Belhaven Town Center.

MIA MCELROY (Box Office Manager) is from Jackson, Mississippi. She has a BFA in acting and a certification in film & TV production management. Past experience include working as the events coordinator for Highball Lanes & Capri Theater and serving as the casting director for a number of indie short films. Although this is her first year working at New Stage as an adult, she has many fond memories of being in different Christmas shows and summer productions as a child. She is elated to be joining the New Stage family once again and is excited for this season!

BETTY WONG (Box Office Assistant/Education Assistant) begins her 18th season at New Stage. She continues to enjoy traveling to schools and towns throughout the state with the Professional Apprentice Company to provide live theatre experiences for students and adults of all ages. When not on the road, you can find her in the box office. She has also served for many years as a volunteer in other areas of the theatre. Her professional work experiences in education and her passion for live theatre have contributed to the growth and expansion of New Stage's Education Department. She has served as a consultant to school districts throughout the state of Mississippi. Wong has a B.S. in educational psychology from Mississippi State University, a M.Ed. from Delta State University, and recently won the 2019 Exemplary Arts Service Award from the Mississippi Alliance for Arts Education.

CARLA MARSH (House Manager) received her B.A. in criminal justice with an emphasis in juvenile justice from Jackson State University. She is pleased to be returning to New Stage for her twenty-first season. Marsh is employed full-time with the Hinds County Sheriff's office.

ACKNOWLEDGEMENTS

The staff of New Stage Theatre wishes to thank the following individuals and companies for the generous donation of time and resources to this production and the 59th season.

Publicity Photos taken on location at *The Orchid Bed & Breakfast*, 628 North State Street, Jackson, MS 39202

Antique Ally
Bloomingdeals

Greg Campbell
Lynn Evans

Jeff Klingfuss
Tim Moak

Polk Interiors
Jimmy 'JR' Robertson



**Find Newstage on Facebook,
Twitter, and Instagram!**

COMING NEXT

ELVIS
PRESLEY

JERRY LEE
LEWIS

CARL
PERKINS

JOHNNY
CASH

MILLION

DOLLAR

QUARTET

CHRISTMAS

BY COLIN ESCOTT

DECEMBER 4 – 22

New Stage depends on the support of volunteers to keep the curtain rising.

You can make a difference by giving a few hours of your time. Some jobs require a regular commitment throughout the season, say once or twice per show; others are assigned “as needed.” If you have a little free time and want to get involved, there are many opportunities available from ushering to scenic painting, poster hanging to ticket taking.

There is bound to be a job for YOU!

Check out our website at www.newstagetheatre.com/about/volunteers



2024-2025 SEASON CONTRIBUTORS

It all begins here. The following individuals, corporations and foundations have made generous contributions to New Stage Theatre. Their gifts provide a major portion of the funding necessary to present the productions you enjoy on our stages, the educational programs we offer and help the theatre maintain its standing as one of the nation's best professional regional theatres. Please take a moment to read the list. They deserve your recognition.

Grand Benefactor (\$2500+)

Kathy Davis
Estate of Peggy Jeanes
Ronald Frith
Frascogna Family Foundation
Don and Becky Potts
Betty and Lee Smithson
Marcy Petrini and Terry Dwyer
Gloria Walker
Julia Marks Young
Paul Vanderberry

Benefactor (\$1000-\$2499)

Gayle and Holmes Adams
Paula Graves Ardelean
Dawn and David Buck
Rick and Ann Calhoon
ChemFirst/First Mississippi Corporation
Jim and Sibyl Child
Peter and Mireille DeBeukelaer
Mark and Kit Fields
Jan Garrick
Tish and Haden Hughes
Danny Marks and Laura Miller Marks
Modena Martin
Luther and Ginnie Munford
Coby Parker and John Stringer
Mary Purvis
Julius and Stephanie Ridgway

George and Ann Schimmel
James and Kathleen Young
Steve and Chris Zachow

Arch Angel (\$500-\$999)

Virginia and David Allen
Mary Helen and Bo Bowen
Drs. Tim and Cheryl Coker
Peggy Coleman
Rusty and Ali Comley
Bill and Myra Cook
Beckie and Richard Feldman
Tina Fortenberry
Cecil Fox
Bill and Kathleen Geary
Bob and Alice Gorman
Denise Halbach
Jim and Beverly Herring
Mary Jabaley
Nora Katz
Monika and Walter Knepper
Shae and Jim Lowery
Kathy Mahloch
Ted and Donna Orkin
Frank Parent
Carol and George Penick
Margaret and Brad Pigott
Christian and Alla Vance
Richard and Susan Slaymaker
Michael Smith
Sally and Bill Thompson
Rebecca Thompson

Judy and John Waskom
Sandra and Charles S. West
Betty Wong

Angel (\$300-\$499)

Chuck Addington
John and Betty Allin
Sarah Jane Alston
Richard and Martha Blount
Catherine Boone
David Bowen
Mimi Bradley
Margaret and Carter Brown
Steve Butler
John Chapman
Dr. Suman and Roslyn Das
Dr. Katy Farrell
Betsy and Henry Folmar
John and Marianne Gaudin
Lester and Ellen Hailey
John and Diana Howell
Dr. Mary Jane Magruder and Jeffrey Levin
Jim and Martha Lightsey
Virgi and Chuck Lindsay
Darri and Keith Mansel
Richard and Sylvia Mills
Joe Morris
Beth and Steve Orlansky
Bill and Susan Osborne
Kim and Trey Porter
Naomi and Bob Ridgway

Holly Wagner
Carla and Randall Wall
Mary Alice and Donny White
Debbie Wolfgram

Patron (\$100-\$299)

Jerry P. Agent
Ivy and Frank Alley
Katherine Anderson
Ann Anderson
Melissa and Ron Applewhite
Carshena Bailey
Julia C. Baker
Bill and Judy Barnett
Carolyn Bigelow and John Zehr
Jayne Britt
Jean and Glen Bush
Thorne and Kelly Butler
Ramon and Mary K. Callahan
Katherine Chesteen
Roger Clifford Clapp
Jan Collins
Gary and Becky Conley
Tom and Sandi Corlett
Kitty Cottingham
Margaret Cupples
Nancy F. Curtis
Melissa and Ralph Daniel
Brenda Dominick
Emily and Jimmy Dossett
Kelley Walton Fenelon
Judy Ferguson
Wayne Ferrell
Sue Simmons Freeman
Libby Garland
Danny Carroll and Robert Gatewood
Andy and Alice Geoghegan
Jackie and Carter Haines
Dianne Harms
Roger and Peggy Hastings

Gail Helms
Lane Greenlee and Rebecca Hodges
Mrs. Taylor Holland
Ellen Hontzas
Carolyn Hughes
Paula James
Mike and Kathleen Duke
Jacque Keltner
Ted King
Jon and Lisa Krassny
Skip Kuzel
Jan and Doug Lemon
Harvey and Sandy Little
T. Longmire
Grace Marsh
Natalie Maynor
Chuck McIntosh
Jim and Sharon Miller
Debra Monroe-Musgrave
Ronnie Musgrove
Mary Clay Morgan
Brittany Mounts
Susan and W. Hibbett Neel
Jim and Jenny Neeld
Fran Noone
Jeanne and Eric Olson
Kathy and Walter Palmer
JoJo and Susan Payne
Dierdre Payne
Clif and Kim Peyton
Steve Price and Deirdre Danahar
George and Jann Puckett
Steve Rachel
Karen Redhead
Frank and Rebecca Rives
Brenda Roberts
Franceska Loeb Roland
Jeanne and Steve Rozman
Cheryl and Richard Rula
Stephen Schutze

Susan Shands-Jones
Kathy Sones
Maureen and Clyde Staley
Ruth and Forrest Stringfellow
John and Liza Sullivan
Anthony and Sheryl Thomas
Terry Thomas
Linda Thompson Robertson
Susanne Tomlinson
Marjorie Underwood
Ed Van Cleef
Jimmy and Becky Vickery
Ree Walden and Mike Bishop
Carol Walker
Cecile Walsh Wardlaw
Anne L. Webster
Bruce Welch
Jo Ann S. Welch
Gigi and Vic Welsh
Libba Wilkes
David and Michelle Williams
Collins Wohnner
Pat McAllister and Jane Woosley

Contributors (\$50-\$99)

Bob and Penny Ammons
Brad Ford
Jimmy and Renee Jones
Shae and Jim Lowery
Sandra Polanski

In Honor of Barbara Austin:

Dawn and David Buck
Alfreda Spell

In Memory of Foye Bycofski:

Al and Billie Green
Susan and Macy Hart
Bill McCarty
Mary and Chico Taylor

**In Memory of Janet Gray
and Russell Luke:**

Dawn and David Buck
Bill McCarty
Francine Reynolds

In Memory of C.B. Carroll:

Barbara Austin

**In Memory of Iva O'Quinn
Stewart:**

Barbara Austin
Bill McCarty

**In Memory of Matthew
Thurmond:**

Susan and Macy Hart

**In Memory of Andy
Reynolds:**

Susan and Macy Hart

**In Memory of Merriam
Davis:**

Barbara Austin
Susan and Macy Hart
Bill McCarty

**In Memory of Dr. Dewey
Myers:**

Bill McCarty
Joe Morris

In Memory of Mimi Bradley:

Amy Bush
Debbie Carrington

Gretchen Gulmon
Ann Hendrick
Bill McCarty
Jeanne Marie Peet
Paula Pratt
St. Andrew's Episcopal
School
Kimberly Van Uden

In Memory of Larry Wells:

Barbara Austin
Dawn and David Buck
Betty and Dudley Marble
Bill McCarty
Oliver Nash
Francine and Chuck
Reynolds
Holly Wagner

HOW CAN YOU HELP? Without the support of people like you, there simply would not be a new stage theatre. We welcome your help. Whether it is in the form of a tax-deductible contribution or a product or service, every gift is deeply appreciated and recognized.

If you would like to contribute, contact New Stage Theatre, P.O. Box 4792, Jackson, MS 39296-4792, (601) 948-3533.

NEW STAGE THEATRE BOARD OF TRUSTEES

Aaron Hill President
Kim Griffing Porter, Vice
President
Jennifer Chance, Treasurer
Julia Young, Secretary

Barbara Austin*
Patti Carr Black*
James K. Child, Jr.*
Christyl Erickson
Stacy Gaines
Justis Gibbs
Susan Hart

Nora Katz
Laura Miller Marks
Bill McCarty III*
Sammy Moon
Luther Munford
Margaret Pigott
Sam Pote
Malaika Quarterman
Rod Red
Julius M. Ridgway, Jr.
Linda Schmidt
Shirley Simpson*
Betty Smithson

John Spann
Carol Taff
Christian Vance
Lydia West

Advisory Board

Nicole Bradshaw
Portia Espy
Oleta Fitzgerald
Myrna Colley Lee
Robert Lesley

*Lifetime Member

SPONSORS

Our Season sponsors provide funding that makes it possible for us to achieve artistic excellence. We salute our 2024-25 season sponsors, and we encourage you to patronize these businesses.



SAM E. AND BURNICE C.
WITTEL FOUNDATION

LINDA AND JOHN
SCHMIDT

THE DORSEY J. BAREFIELD
CHARITABLE TRUST



New Stage programming is made possible with the support of:



THE BILL McCARTY III
FOUNDATION



THE CHISHOLM FOUNDATION



NEW STAGE
Theatre

THE JANE REID PETTY THEATRE CENTER

1100 Carlisle • Jackson, Mississippi 39202

BOX OFFICE HOURS

Monday-Friday: 10:00 a.m. – 5:00 p.m.

*During performances, will remain
open until 7:00 AND box office hours on
Saturdays to be open until 7:00*

Saturday: 4:00 p.m. – 7:00 p.m.

Sunday: 1:00 p.m. – 3:00 p.m.

*Saturday and Sunday hours only apply
during the run of a show.*

TELEPHONE/WEBSITE

Main Number: (601) 948-3533

Box Office: ext. 222

Artistic Director: ext. 224

Managing Director: ext. 246

Marketing Director: ext. 225

Education Director: ext. 232

Website: www.newstagetheatre.com

Email: mail@newstagetheatre.com

New Stage Theatre is a Constituent of Theatre Communication Group (TCG),
the national organization for the American theatre.