

“In the darkest moments, the truth finds its light.”

WAIT UNTIL DARK

By Frederick Knott

Adapted by Jeffrey Hatcher

Directed by Francine Thomas Reynolds

October 21 –
November 2, 2025

Sponsored by



MISSISSIPPI ARTS
COMMISSION

NEW STAGE
Theatre

Costume Designer
Aryana Gaines

Scenic/Lighting Designer
Brent Lefavor

Technical Director
Richard Lawrence

Production Manager
Casey Nelms

Stage Manager
Rachel Boudreaux

Properties Designer
Gabby Luther

Sound Designer
Callie Jackson

Fight Director
Drew Stark

Wait Until Dark is presented by arrangement with Concord Theatricals on behalf of Samuel French, Inc. www.concordtheatricals.com

WAIT UNTIL DARK

By Frederick Knott
Adapted by Jeffrey Hatcher

"Wait Until Dark" adapted by Jeffrey Hatcher was
Originally Produced by Geffen Playhouse
Randall Arney, Artistic Director; Ken Novice, Managing Director
Behnaz Ataee, General Manager; Regina Miller, Chief Development Officer

SETTING

A basement apartment of an old brownstone in Greenwich Village. October 1944.

ACT I

Scene 1: Friday evening
Scene 2: Saturday afternoon.

ACT II

About an hour later.

There will be one 15-minute intermission

** Warning: This production uses strobe lights.*

The videotaping or making of electronic or other audio and/or visual recordings of this production and distributing recordings or streams in any medium, including the internet, is strictly prohibited, a violation of the author's rights and actionable under United States Copyright Law.

THE CAST

SUSAN HENDRIX.....	Reese Overstreet
MIKE TALMAN.....	Drew Stark
SAM HENDRIX.....	Hosea Griffith
SERGEANT CARLINO.....	Chris Roebuck
HARRY ROAT.....	Cliff Bowen
LISA.....	Hannah Beth Rollman+
GLORIA.....	Lee Harwell*
	Amani Palmer**

* performs on: Oct. 22-7 pm, Oct. 24-7 pm, Oct. 26-2 pm, Oct. 28-7 pm, Oct. 30-7 pm, Oct. 30-10 am†, Oct. 30-7 pm, and Nov. 1-7 pm

**performs on: Oct. 21-7 pm, Oct. 23-10 am†, Oct. 23-7 pm, Oct. 25-7 pm, Oct. 29-1 pm, Oct. 31-7 pm, and Nov. 1-2 pm

†tentative school group matinee dependent on bookings

UNDERSTUDIES

Understudies never substitute for listed performers unless a specific announcement is made at the time of the performance.

For MIKE: Michael Kinslow; For CARLINO: Zane Hartfield; For ROAT: SETH RODIVICH+; For SUSAN: Michaela Williams+; For SAM: Tarvorius House+; For GLORIA: Hannah Beth Rollman+

+Member of Professional Associate Artist Company at New Stage

AUTHOR

Jeffrey Hatcher. Broadway: *Never Gonna Dance* (Book). Off-Broadway: *Three Viewings* and *A Picasso* at Manhattan Theatre Club; *Scotland Road* and *The Turn of the Screw* at Primary Stages; *Tuesdays with Morrie* (with Mitch Albom) at The Minetta Lane; *Murder By Poe*, *The Turn of the Screw* and *The Spy* at The Acting Company; *Neddy* at American Place; and *Fellow Travelers* at Manhattan Punchline.

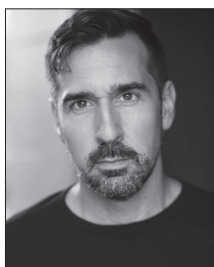
Other Plays/Theaters: *Compleat Female Stage Beauty*, *Mrs. Mannerly*, *Murderers*, *Mercy of a Storm*, *Smash*, *Armada*, *Korczak's Children*, *To Fool the Eye*, *The Falls*, *A Piece of the Rope*, *All the Way with LBJ*, *The Government Inspector*, *Dr. Jekyll and Mr. Hyde* and others at The Guthrie, Old Globe, Yale Rep, The Geffen, Seattle Rep, Cincinnati Playhouse, Cleveland Playhouse, South Coast Rep, Arizona Theater Company, San Jose Rep, The Empty Space, Indiana Rep, Children's Theater Company, History Theater, Madison Rep, Intiman, Illusion, Denver Center, Oregon Shakespeare Festival, Alabama Shakespeare Festival, Milwaukee Rep, Repertory Theater of St. Louis, Actors Theater of Louisville, Philadelphia Theater Company, Asolo, City Theater, Studio Arena and dozens more in the U.S. and abroad.

Film/ TV: *Stage Beauty*, *Casanova*, *The Duchess*, and episodes of *Columbo*. Grants/Awards: NEA, TCG, Lila Wallace Fund, Rosenthal New Play Prize, Frankel Award, Charles MacArthur Fellowship Award, McKnight Foundation, Jerome Foundation and Barrymore Award Best New Play. He is a member and/or alumnus of The Playwrights Center, the Dramatists Guild, the Writers Guild and New Dramatists.

THE CAST



REESE OVERSTREET (Susan Hendrix) is thrilled to return to New Stage Theatre, where she grew up as a young performer. She earned her BFA in Acting for Stage and Screen from the University of Mississippi. Recent credits include Baker's Wife in *Into the Woods*, Pilar in *Legally Blonde*, Daughter in *The Trail to Oregon!*, and Meg(u/s) in *Little Women*. When not on stage, she teaches theatre to preschoolers, lower schoolers, and middle schoolers at Jackson Academy, where she also serves as the Assistant Director of Afterschool. She is deeply grateful to Francine for this opportunity and is so happy to be back at New Stage Theatre.



DREW STARK (Mike Talman/Fight Director) is thrilled to return to New Stage after receiving his MFA in theatre at the University of Central Florida in Orlando, Fla. Drew recently completed his teaching residency at Orlando Shakes with performances in *Kinky Boots*, *Henry V*, *Christmas Carol*, *Charlotte's Web*, and the world premiere of *A Big Day for Baseball: A Magic Treehouse Adventure*. Stark holds a B.A. from the College of William and Mary. Previous New Stage performance credits include *Bright Star* (Daryl Ames), *Sweet Potato Queens* (George), *Murder On The Orient Express* (Michel), *The Diary of Anne Frank* (Mr. van Daan), *Shakespeare in Love* (Marlowe), and *33 Variations* (Mike). Drew is a theatre educator and professional fight director/choreographer. Instagram: @drewstarkactor Website: drewstarkactor.com



HOSEA GRIFFITH (Sam Hendrix) is a graduate of the University of Mobile (M.M.) and Mississippi College (B.M.). He has had the pleasure of portraying many roles in Jackson and the surrounding areas, including *Sister Act*, *Bright Star*, and *A Christmas Carol* (New Stage Theatre). Recently, Hosea was seen in *Songs of a New World* (Uproar Theatre), *The Color Purple* (Jackson State University), *9 to 5*, *Chicken and Biscuits*, and *Beautiful* (New Stage Theatre) as well as various workshops and concert readings of the musical play *Slippin' Through the Cracks* in Jackson (New Stage Theatre), New York, and Chicago (Goodman Theatre).

actor chat

Stay and meet the cast after *Wait Until Dark* following the show on Wednesday, Oct. 22 and Thursday, Oct. 30, after the evening performance. Audience members may ask questions of the actors, director and designers in an informal setting.



CHRIS ROEBUCK (Sergeant Carlino) is a former education director and resident teaching artist at New Stage Theatre in Jackson. Roebuck was last seen as Alan in Fondren Theatre Workshop's production of *God of Carnage*. At New Stage, Roebuck has appeared in *Elf*, *A Christmas Carol*, *Bright Star*, *Sister Act*, *Shakespeare In Love*, *Beauty and the Beast*, *The Robber Bridegroom*, *Shrek the Musical*, *The Foreigner*, and *The 39 Steps*. His directing credits include *A Wrinkle in Time*; *Goodnight, Moon*; *The Cat in the Hat*; *The Lion, The Witch, and The Wardrobe*;

The Weir; *Lilly's Purple Plastic Purse*; and *Dead Man's Cell Phone* at New Stage; *Anne of Green Gables*, *Elf the Musical*, *Into The Woods* and *Steel Magnolias* at Brookhaven Little Theatre; and *American Buffalo* and *Dinner with Friends* with Fondren Theatre Workshop.



CLIFF BOWEN (Harry Roat) was last seen at New Stage as Richard Burbage in *Shakespeare in Love*. Over the years, he has also appeared at New Stage in roles such as Bob Cratchit in *A Christmas Carol*, the angry pianist in *Forever Plaid* and he was the musical director for *A Funny Thing Happened on the Way to the Forum*. He thinks New Stage's staff and crew are first rate and a pleasure to work with. He's been featured in national commercials and has recorded varied TV and radio commercial voice-overs, including "on-hold" messages for many companies. He can assure

you that your call was indeed very important to him. In 2026, Cliff's newest directorial and acting project will be released: A 10-episode, FBI-procedural, radio play for Amazon Audible- *Look of Innocence*. Produced by Regulators Productions. LookofInnocence.com. He hopes you enjoy *The Play That Goes Wrong*. This one's for Mom.



LEE HARWELL (Gloria) is a 15 year old native of Jackson. She is in the 9th grade. Lee participates in the New Stage Youth Acting Troupe and enjoys the New Stage Broadway Jr summer camps. She has been in *Sister Act Jr* and *The Lion King Jr* as well as the Youth Acting Troupe's productions of *The Chaos Before Christmas*, *As You Like It*, *The Elf on the Shelf Must Die* and *Twelfth Night*. Lee is thrilled to be in her first main stage production! She would like to thank her family, friends and Xerron Mingo, Director of Education at New Stage, for always believing in her.



AMANI PALMER (Gloria) is a 15 year old from Brandon, MS. She is in ninth grade and attends Rosa Scott High School. She is the daughter of T'Ondrea and Jonathan Robinson and Jermaine Kelly. She is a member of Pinelake Church where she loves doing missions. Amani is a member of the Radiance Show Choir and enjoys performing on stage. She loves traveling internationally and experiencing different cultures. Amani has appeared in *The Sound of Music* as Marta, *Fences* as Raynell, *The Secret Garden* as Mary, and the *Lion King, Jr.* as Young Nyla at New Stage Theater. Amani gives all the honor and glory to God for giving her this opportunity and thanks her family for their continuous love and support.



MICHAELA WILLIAMS+ (Susan Hendrix U.S.) is an actor from Columbus, GA, with a passion for fashion and a flair for the dramatic! She is a 2025 graduate of Auburn University with a BFA in Musical Theatre. Her previous roles include *Ordinary Days* (Deb), *Natasha Pierre and the Great Comet of 1812* (Fedya Dolokhov), *Barbecue* (Marie), *The Wolves* (#00), *Violet* (Lula Buffington), and more! Michaela's artistry also includes draping in the costume shop, writing new works, and exploring various styles of dance. When she's not performing, she enjoys reading & relaxing with a cup of coffee. She is so excited to begin her professional career at New Stage, and to embrace all of the opportunities yet to come!



MICHAEL KINSLOW (Mike Talman U.S.) is thrilled to return to New Stage Theatre, where past credits include *Lend Me a Soprano*, *Crimes of the Heart*, *A Time to Kill*, *Beauty and the Beast*, *Shakespeare in Love*, and *The Curious Incident of the Dog in the Night-Time*. Other professional work includes *Ripcord*, *Death of a Streetcar Named Virginia Wolf*, *INK*, and *The Laramie Project*. Offstage, Michael enjoys board games and training with his wife, Amanda, and their sons, Zac and Ashton. Enjoy the show!



TARVORIUS K. HOUSE+ (Sam Hendrix U.S.) is an actor, singer, and director from Lowndes County, Alabama. He earned his Bachelor of Arts in Theatre Arts with a concentration in Performance from Alabama State University in Spring 2024. While at ASU, Tarvorius performed in several mainstage productions, including *Dreamgirls* (C.C. White), *The Wiz* (Tinman), and *Blues for an Alabama Sky* (Sam Thomas). Expanding his artistry beyond the stage, he served as Musical Director for *Little Shop of Horrors* at Booker T. Washington Magnet High School as well as director of the short play *Smoke Scenes* by Nick Zagone. Tarvorius is honored to continue sharing his passion for storytelling with his new artistic home at New Stage Theatre.



ZANE HARTFIELD (Sergeant Carlino U.S.) Zane Hartfield (Carlino Understudy) Hartfield was last seen earlier this year in the Mississippi Shakespeare Festival's production of *The Tempest* as well as the Fondren Theatre workshop's production of *The Invention of Language*. Other stage credits include *Much Ado About Nothing*, *A Christmas Carol*, *The Curious Incident of the Dog in the Night-Time*, *The Sound of Music*, *The Mousetrap*, *Private Lives*, *The Foreigner*, *Over The River and Through the Woods*, *Last of the Red Hot Lovers*, *Godspell*, *The Fantasticks*, *Reckless*,

The Traveling Lady, *The Matchmaker*, *Alice in Wonderland*, *Amelia Earhart*, *Stardust*, *Antigone* and *Clue, the Musical*. He has appeared in various television and radio commercials and will appear in a supporting role in the upcoming film *Ginny's Faith*.



SETH RODIVICH+ (Harry Roat U.S./Assistant Director/Fight Captain) is a 2025 graduate from the University of Southern Mississippi with a B.F.A. in theatre performance. He was born and raised in southern Louisiana. Seth's previous performance roles include *Big Fish* (Will) and *The Lieutenant of Inishmore* (Christy/James) at USM. He is the co-founder of the Hattiesburg theater company, *The New Era Theatre* (Instagram: @the_ne_t). *Seth is pursuing a career in artistic direction and theatre acting.* Seth would like to thank all friends and family for the

their continued support.



HANNAH BETH ROLLMAN+ (Lisa/Gloria U.S.) is thrilled to return to New Stage, where she has previously performed in *Little Women* (Troll/Amy U.S.) as well as in the Unframed shows *The Grown-Ups* (Maeve) and *Fairview* (Suze). Originally from Birmingham, AL, she is a graduate of Belhaven University, where she earned her BA in Theatre Performance and her BS in Biology. Her favorite roles from Belhaven include Claudia in *Suite Surrender*, Gwendolen in *The Importance of Being Earnest*, and Susy in *Glimpses of the Moon*. Hannah Beth is thankful for this wonderful cast and crew and for her supportive husband! Philippians 1:6.

THE PRODUCTION TEAM

FRANCINE THOMAS REYNOLDS (Director/Artistic Director) has been the artistic director at New Stage since 2006 and has worked as a theatre artist for 38 years. She recently directed *Come From Away*, *Noises Off*, *Gaslight*, *Beautiful*, *The Carole King Musical*, *The Secret Garden*, *Every Brilliant Thing*, *The Sound of Music*, *The Curious Incident of the Dog in the Night Time*, *I Just Stopped By to See the Man*, *The Debate for Democracy*, *Pipeline*, *Bright Star*, *Hell in High Water*, *Sweat*, *Shakespeare in Love*, *Silent Sky*, and *Best of Enemies*. Favorite acting roles include Dr. Katherine Brandt in *33 Variations*, Polly in *Other Desert Cities*, Lucille in *Dividing the Estate*, and Edna Earle in Eudora Welty's *The Ponder Heart*. She has directed a variety of shows including *All The Way*, *The Whipping Man*, *The Grapes of Wrath*, *Our Town*, *Red*, *Who's Afraid of Virginia Woolf?*, *Hairspray*, *Mahalia: A Gospel Musical*, *The Great Gatsby*, *Lombardi*, *Boeing*, *Boeing*, *A Christmas Carol*, *Gee's Bend*, *A Raisin in the Sun*, *Annie*, *A Soldier's Play*, and *I Love You, You're Perfect, Now Change*. Reynolds is a 2022 recipient of a Directing Fellowship from the Mississippi Arts Commission. She served three terms on the board of directors for the Theatre Communications Group (TCG) and several terms on the Mississippi Theatre Association Board of Directors. Reynolds has served on grant panels for the National Endowment of the Arts and the Mississippi Arts Commission and has enjoyed adjudicating for Poetry Out Loud and the Southeastern Theatre Conference. Recently she served as a member of the 2025 Governor's Arts Awards Selection Committee for the Mississippi Arts Commission. Originally, from the Upper Peninsula of Michigan, Reynolds enjoys living in Jackson with her husband, Chuck.

RACHEL BOUDREAU (Stage Manager) Rachel Boudreau is thrilled to join New Stage Theatre as their Production Stage Manager. Rachel is a member of the Stage Managers' Association, and received their Bachelor of Arts in Theatre from The University of Southern Mississippi in 2025. Past work includes *The Play That Goes Wrong*, *Lion King Jr*, *Come From Away*, *Big Fish*, *The Book of Will*, *Fuddy Meers*, *Pete the Cat*, *Into the Woods*, *Is God Is*, *Macbeth*, *The Bear*, *The Addams Family*, and *She Kills Monsters*.

CASEY NELMS (Production Manager) is a proud Mississippian born and raised in Pearl, Miss. She received her Bachelor of social work from Belhaven University followed by her master's of social work from the University of Southern California. While living in Los Angeles, she transitioned from a robust therapy career to producing and supervising productions in the film industry. Nelms has been fortunate enough to work with companies such as Lionsgate, Patriot Pictures, and Convoke Media, as well as many others, and now happily serves as production manager at New Stage Theatre, where she has worked on productions such as *Little Women*, *Come From Away*, and *Gaslight*. She lives on the Ross Barnett Reservoir with her husband and their two droopy-faced beagles, Olive and Mabel.

CALLIE JACKSON (Sound Designer) is a graduate of Mississippi State University with a B.A. in Political Science and is from Madison, MS. She began working with New Stage Theatre in 2024 as a sound board operator and is now working as a full time production staff member. Her regional credits include: *Noises Off*, *Million Dollar Quartet Christmas*, and *The*

Mountaintop. She worked with Center Players Community Theatre as the Sound Designer/Engineer for 6 years. Some of those shows include; *Oklahoma, Bye Bye Birdie, Newsies, Into the Woods, Clue, and Grease.* She is excited to be continuing her passion of theatre with New Stage Theatre and is grateful for the opportunity. She will be taking over as the resident Sound Designer and Engineer in the next season. She would like to thank Alberto Meza for taking the time to train her and prepare her to take over.

RICHARD LAWRENCE (Technical Director) serves as the vice president of Fondren Theatre Workshop and has appeared in *A Christmas Memory at New Stage*, FTW's *The Rocky Horror Show, Buck Nekkid for Jesus*, directed FTW's *Every Christmas Story Ever Told*, and most recently appeared as Trekkie Monster in *Avenue Q*. He was also the director of the widely successful productions of *Cabaret and Company*, which were joint productions of FTW and Actor's Playhouse of Pearl, with support from New Stage. Lawrence has been seen in New Stage productions of *The Trip to Bountiful* and UnFramed's *The Eight: Reindeer Monologues, How I Learned to Drive, The Weir, Circle Mirror Transformation, and Dublin Carol.* Lawrence has won three Best Set awards at Mississippi Theatre Association conferences, and has also won Best Set at Southeastern Theatre Conference.

BRENT LEFAVOR (Scenic/Lighting Designer) M.A., MFA, a professional director, and designer since 1976. He designed lights at Robert Redford's Sundance Theatre for 10 years; was a founding member, director, and designer for Walk-On's Inc. in Salt Lake City; and directed and designed at Grand Teton Mainstage theatre in Jackson Hole, Wyo. Lefavor moved to Mississippi in 1983 where he taught theater for 25 years at Millsaps College. During that time he designed sets and lights for more than 100 shows. Lefavor began as a guest artist at New Stage Theatre in 1998 with the lighting for *A Funny Thing Happened on the Way to the Forum*; he became a full-time staff member in 2009, where he continued for nine seasons. At New Stage he designed lights and sets, some favorites include: *33 Variations, Christmas Carol (2013), All My Sons, The Miracle Worker, Cat on a Hot Tin Roof, Smokey Joe's Café, Noises Off, You're a Good Man Charlie Brown, and Gaslight.* At New Stage he directed *Sherlock Holmes and the Adventure of the Suicide Club* and *Peter Pan.* My thanks to Francine and the staff for pulling me out of retirement.

ARYANA GAINES (Resident Costume Designer/Costume Director) is a costume designer and technician specializing in historical costume, dancewear, and contour garment construction. She recently served as a guest artist at Austin Peay State University, designing and constructing corsets for *Intimate Apparel* by Lynn Nottage and leading a workshop on corset draping. From 2021 to 2023, she was the resident Draper at the Nashville Ballet, contributing to acclaimed productions such as *Un Ballo* and the nationally televised *Black Lucy and the Bard.* Aryana earned an MSc in Contour Fashion Innovation from De Montfort University in Leicester, UK, where she won the prestigious Roadley Award for Sustainable Design, and a BFA in Costume Design and Technology from the University of Mississippi (Ole Miss), where she designed *Legally Blonde: The Musical.* Her 2020 costume design for *Near/Far: A Zoom Production* at Ole Miss was selected for the U.S. submission to the 2023 Prague Quadrennial. She also completed a costume stitching apprenticeship as part of Santa Fe Opera's award-winning 2022 summer season, including the world premiere of *M. Butterfly.*

GABBY LUTHER (Properties Designer) is a William Carey University Alum with a Bachelors of Fine Arts in Musical Theatre. He has been a part of the theatre world for about 10 years now, building and performing in shows from North Mississippi to South and even on the west coast. He is super excited and thankful for the honor and privilege of working with New Stage!

MICHAEL MONTGOMERY (Scenic Charge Artist) is originally an artist and actor from Mobile, AL. He moved to Jackson to receive a BA from Millsaps College where he studied Studio Art, Music and Creative Writing. There, he performed in multiple shows, his favorite production being David Ives’s *All in the Timing: Sure Thing and The Universal Language*. His more recent performances come from the New Stage’s Unframed Series. He has primarily served as a set painter for New Stage since 2023 and making props since 2024. He is currently creating his personal art exhibition titled “Labor of Tough Love” that will be displayed in the Art Center of Mississippi this December.

KYMBRIANNA GRIGGS+ (Assistant Stage Manager) is a recent BFA Acting graduate from the University of Southern Mississippi. Their USM performance credits include *Sense and Sensibility* (Fanny), *Dontrell*, *Who Kissed the Sea* (Shea), *Is God Is* (Racine), and more. Born and raised in Jackson, Mississippi, Kymbrianna is deeply grateful to their family and friends for their continued support and wisdom as they begin this new journey!

CREW

Assistant Director/Light Board Operator/Fight Captain	Seth Rodovich+
Lead Electrician	Connor Sutton
Assistant Technical Director	Antonio Juarez
Assistant Stage Manager	Kymbrianna Griggs+
Carpenters	Dave Ellis, Jimmy Robertson, Brent Lefavor
Running Crew	Kymbrianna Griggs+, Tarvorius House+, and Hannah Beth Rollman+
Sound Board Operator	Michaela Williams+
Costume Assistant	Lamana Stringfellow
Stitchers	Esther Margaret, Maria Matos

THE ADMINISTRATIVE STAFF

DAWN BUCK (Managing Director) has worked on staff at New Stage for more than 30 years. She began her career at New Stage in the fall of 1981 as a box office assistant. Since that time, she has worked as box office manager, audience services director, house manager, book-keeper, business manager and marketing director. Buck’s other professional artistic credits include the USA International Ballet Competition, the Thalia Mara Arts International Foundation – World Performance Series presenting a series of performing artists including American Ballet Theatre, Aquila Theatre of London, Joshua Bell, Alvin Ailey, Cirque Eloize,

Wynton Marsalis, and the Lincoln Center Jazz Orchestra. She attended Belhaven University and is an alumnus of Leadership Jackson and a graduate of Dale Carnegie. Buck also completed a residency on theatre management at the Eugene O'Neill Center through a grant from the Foundation for the Extension and Development of Professional American Theatre (FEDAPT). Prior to serving on the staff of the USA International Ballet Competition, she also worked with America Reads – Mississippi, and with Imageworks – Films for Business, where she assisted with the production of commercials, documentaries, and training videos.. She resides in the Heatherwood neighborhood with her husband David and has two sons who live in the big “N” cities of New York and Nashville.

BILL MCCARTY III (General Manager), a graduate of the University of Mississippi, has extensive background in wholesale and retail sales and real estate property management with the Jitney Jungle supermarket chain. The company was founded by his Grandfather Will McCarty and two Holman cousins in 1919. The families grew the business into a profitable billion dollar Mississippi-based company led by Bill McCarty Jr, his father, Henry Holman and many talented associates which sold in 1996. During his grocery career, Jack Stevens and Ivan Rider recruited Bill in 1973 to run a follow-spotlight for *The Gershwin Show* at the theatre's original Gallatin Street location. He has continued to volunteer with New Stage for more than 51 years in all areas including production, lighting and sound design, backstage, and for New Stage fundraising events. He is involved in the day-to-day management, maintenance, and production for the theatre and serves on the Board of Trustees as a lifetime member. His favorite design credits are *A Christmas Carol* (1984), *Greater Tuna* (1986), *The Gin Game* (1987), and *A Streetcar Named Desire* (1990).

MELISSA TILLMAN (Director of Business Services) is a graduate of Belhaven University where she received a B.A. in technical theatre. She served as the audience services director and marketing director at New Stage, has worked as a box office associate at Lawlor Events Center in Reno, Nevada, and assisted with many box office activities at Belhaven University. Tillman has stage managed many shows in several parts of the country, including Las Vegas and Tennessee. Her stage managing credits include *Oklahoma!*, *Meet Me in St. Louis*, *The Wizard of Oz*, *Taming of the Shrew*, and *Love's Labours Lost*; and *Noye's Fludd* and *La Boheme* with the Mississippi Opera. This is Tillman's twentieth season with New Stage. She currently resides in Madison with her husband, Kyle, their son, River, and their dog Wash.

XERRON MINGO (Education Director) is a graduate of Florida A&M University. Born and raised in St. Thomas, Virgin Islands. While living in New York City, he worked as a health & safety manager for Apple TV and HGTV productions. He also worked as a testing secretary and production coordinator for television shows with LIONSGATE and AppleMusic Reviews. For the past ten summers, Mingo has worked at Raquette Lake Camps teaching musical theatre to students from all across the world. Mingo could not be more blessed to continue teaching, coaching, and mentoring in his third season as Education Director at New Stage Theatre. During New Stage's 58th season on our mainstage, he directed *Chicken & Biscuits & Sister Act, Jr.* Mingo also directed the touring productions of *Junie B. Jones*, *The Musical*, *Anne & Emmett*, & *Blues for an Alabama Sky* (Unframed). Mingo played the Macy's Store Manager in *Elf*, *The Musical* and served as the choreographer for the production. He also

directed *Mean Girls, Jr.* and played the role of Gabriel in *Fences*. Mingo also played the role of Fezzwig in *A Christmas Carol* at New Stage in 2021. He has worked professionally at a plethora of regional theaters in a handful of states. Mingo continues to live in the light and encourages everyone else to do the same.

JOEY NELMS (Director of Marketing) is from Pearl, Mississippi. He holds a BA in visual art from Belhaven University and a MFA in Dramatic Writing from the Savannah College of Art and Design. Joey has worked as a filmmaker in Los Angeles and Jackson, with companies such as NBC/Universal, Starz, HBO, and Lionsgate.

BETTY WONG (Box Office Assistant/Education Assistant) begins her 18th season at New Stage. She continues to enjoy traveling to schools and towns throughout the state with the Professional Apprentice Company to provide live theatre experiences for students and adults of all ages. When not on the road, you can find her in the box office. She has also served for many years as a volunteer in other areas of the theatre. Her professional work experiences in education and her passion for live theatre have contributed to the growth and expansion of New Stage's Education Department. She has served as a consultant to school districts throughout the state of Mississippi. Wong has a B.S. in educational psychology from Mississippi State University, a M.Ed. from Delta State University, and recently won the 2019 Exemplary Arts Service Award from the Mississippi Alliance for Arts Education.

MAHRI MCLEAN (Box Office Manager) graduated in 2023 from Belhaven University with a BA in Theatre Performance. This is her fourth season working with Newstage in various capacities, and she is so grateful for the opportunity to work in live theatre every day. Previous acting and production credits include *The Moors* (Emilie), *A Lovely Sunday For Creve Coeur* (Costume Designer), *The Spitfire Grill* (Shelby Thorpe), *The Burial at Thebes* (House Manager), and most recently, *Mamma Mia!* (Sophie Sheridan). Mahri also serves as a board member at Pearl Community Theatre. Outside of theatre, you can find Mahri reading, making detailed playlists, and spending time with her cat Rowan and her partner Corey.

CARLA MARSH (House Manager) received her B.A. in criminal justice with an emphasis in juvenile justice from Jackson State University. She is pleased to be returning to New Stage for her twenty-first season. Marsh is employed full-time with the Hinds County Sheriff's office.

ACKNOWLEDGEMENTS

The staff of New Stage Theatre wishes to thank the following individuals and companies for the generous donation of time and resources to this production and the 60th season.

Belhaven University	Habitat for Humanity	Jerel Levanway	The Medgar and
Broadmeadow United	Mississippi Capital	Jakob Myers-Heldt	Myrlie Evers Home
Methodist Church	Area ReStore	Elissa Sartwell	

COMING
NEXT



Disney
FROZEN
THE BROADWAY MUSICAL

December 4 - December 21, 2025

NEW STAGE THEATRE BOARD OF TRUSTEES

Aaron Hill, President
Kim Griffing Porter, Vice
President

Jennifer Chance, Treasurer
Julia Young, Secretary

Barbara Austin*
Patti Carr Black*
James K. Child, Jr.*
Tyler B. Clarke
Christyl "Cricket" Erickson
Stacey Gaines

Justis Gibbs
Susan Hart
Dan Kline
Bill McCarty III*
Laura Miller Marks
Sammy Moon
Luther Munford
Margaret Pigott
Sam Pote
Rod Red
Julius M. Ridgway, Jr.
Dr. Linda G. Schmidt

JeriAnna Shaw
Michael Smith
Betty Smithson
John Spann
Carol Taff
Christian Vance
Lydia West

*Lifetime Member

2025-2026 SEASON CONTRIBUTORS

It all begins here. The following individuals, corporations and foundations have made generous contributions to New Stage Theatre. Their gifts provide a major portion of the funding necessary to present the productions you enjoy on our stages, the educational programs we offer and help the theatre maintain its standing as one of the nation's best professional regional theatres. Please take a moment to read the list. They deserve your recognition.

These donations were received from May 16, 2025 to October 12, 2025

Grand Benefactor (\$2500+)

Mrs. Sid Davis
Mark and Kit Fields
John Gaudet and Brian Askew
Brent Lefavor
Danny Marks and Laura Miller Marks
Bill McCarty III
Betty and Lee Smithson in honor of Patti Carr Black
Kathryn Wiener

Benefactor (\$1000-\$2499)

Gayle and Holmes Adams
Paula Graves Ardelean
Barbara Austin
Dawn and David Buck
ChemFirst/First Mississippi Corporation
Jim and Sibyl Child
Peter and Mireille DeBeukelaer
Ronald Frith
Jan Garrick
Kathleen and Bill Geary
Denise Halbach
Susan and Macy Hart
Tish and Haden Hughes
The Estate of Peggy Jeanes
Coby Parker and John Stringer
Carol and George Penick
Mary and Alex Purvis
Julius and Stephanie Ridgway
Ann and George Schimmel
Julia Marks Young
Steve and Chris Zachow

Arch Angel (\$500-\$999)

Virginia and David Allen
Martha Blount
David Bowen
Mary Helen and Bo Bowen
Liz and Bill Brister
Kitty and Drew Bryant

Jake and Tyler Clarke
Timothy and Cheryl Coker
Peggy W. Coleman
Rusty and Ali Comley
Bill and Myra Cook
Kane and Betsy Ditto
Dr. Katy Farrell
Beckie and Richard Feldman
Cecil Fox, Jr.
Stacey and Earnest Gaines
Bob and Alice Gorman
Jim and Beverly Herring
Kathy Mahloch
Ted and Donna Orkin
Frank Parent
Alice Paysinger
Kurt Proctor and Joe Conrad
Ross & Yerger
Richard and Susan Slaymaker
Jack Stevens
Sally and Bill Thompson
Holly Wagner
Jessi and Carlton Wall
Judy and John Waskom
Carla and Randy Wall
Betty Wong

Angel (\$300-\$499)

Chuck Addington
Jerry Peyton Agent
Betty and John Allin
Joe Baker
Aletta and Steve Butler
Dr. and Mrs. Suman K. Das
Mike and Kathleen Duke
Rusty and Alicia Ferguson
Betsy and Henry Folmar
Christine and Bobby Gill
Steve and Melissa Godbold
Lester and Ellen Hailey
John and Diana Howell
Connie Kossen

Phil and Mary Kuhn
Dr. Mary Jane Magruder and Jeffrey Levin
Martha and Jim Lightsey
Jim and Shae Lowery
Joe Morris in honor of Bill McCarty III
Beth and Steve Orlansky
Bill and Susan Osborne
Cynthia and Hugh Parker
Bill and Karen Philipp
Naomi and Bob Ridgway
Brenda Roberts
Jo Ann S. Welch
Sandra and Charles S. West
Debbie Wolfgram

Patron (\$100-\$299)

Ola and Henry Allen
Ivy and Frank Alley
Martin Amundson
Katherine Anderson
Melissa and Ron Applewhite
Hunter and Tina Arnold
Lou Anne Askew
Carshena L. Bailey
Ray and Cindy Balentine
Judy and Bill Barnett
John Bolland
Princess Bethel Border
Vic and Martha Bowman
Jo Lynn Bridges
Lind Bussey
Thorne and Kelly Butler
Mr. and Mrs. Ramon L. Callahan
Kay P. Candelora
Leah Cannon
Bob and Jeannie Chunn
Roger Clifford Clapp
Tom and Frances Coleman
Gary and Becky Conley
Ann Homer Cook and Marilyn Beach

Tom and Sandi Corlett
Kitty Cottingham
Margaret Oertling Cupples
Nancy F. Curtis
Melissa and Ralph Daniel
Anna and Cecil Dexter
Carter and Jackie Haines
Kelley Walton Fenelon
Judy Ferguson
Joshua and Kristen Fowler
Sue Simmons Freeman
Linda Futris
Libby Garland
Andy and Alice Geoghegan
Gregory and Sharon Gordon
Linda Hadala
Polly Hammett
David and Peggy Hampton
Dianne Harms
Roger and Peggy Hastings
Gail Helms
Lane Greenlee and Rebecca
Hodges
Nat and Cindy Keating
Jacque Keltner
Ted King
Monika and Walter Knepper
Jon and Lisa Krassny
Skip Kuzel
Harvey and Sandy Little
Ginny Lloyd
Darri and Keith Mansel
Grace E. Marsh
Barbara Marshall
Natalie Maynor
Debra and Anthony Musgrave

Michael and Joan Moore
Brittany Mounts
Susan and W. Hibbett Neel
Jim and Jenny Neeld
Fran Noone
Jeanne and Eric Olson
Walter and Kathy Palmer
Joel and Susan Payne
Marion Peaks
George and Mae Patton
Maggie Pooley
Drs. Wesley and Gwendolyn
Prater
George and Jann Puckett
Steve Rachel
Karen Redhead
Frank and Rebecca Rives
Jeanne and Steve Rozman
Sherry and Richard Rula
Kathleen and Stephen Schutz
Susan Shands Jones
Kathleene Shapley
Kathy Sones
Joyce Sparks
Maureen and Clyde Staley
Ruth and Forrest Stringfellow
Fulvia Subauste
Robert and Regenia Sulton
Jan and Zach Taylor
Anthony and Sheryl Thomas
Martha Ross and Jim Thomas
Terry Thomas
Linda Thompson Robertson
Susanne Tomlinson
Kimberly Tramel
Randy Underwood

Margie and Chad Van Meter
Jimmy and Becky Vickery
Carol Walker
Anne L. Webster
Bruce Welch
Ashley Wicks
David and Michelle Williams
Terry Winstead
Pat McAllister and Jane Woosley
Contributors (\$50-\$99)
Bob and Penny Ammons
Brad Ford
Cora Calomeni
Justis Gibbs
Maggie Herndon
Jimmy and Renee Jones
Joseph Kopacz
Shae and Jim Lowery
Sandra Polanski
Paul Rankin

In Honor of Barbara Austin:

Dawn and David Buck
Bill McCarty III
John and Mitzi Norris
Francine Reynolds

In Memory of Michael McNally:

Ann McNally
Patrick McNally
Kevin McNally

**In Honor of Bob, Sarah, and Joe
Morris:**

William and Camille Morris

HABITAT
Boutique

HOW CAN YOU HELP? Without the support of people like you, there simply would not be a new stage theatre. We welcome your help. Whether it is in the form of a tax-deductible contribution or a product or service, every gift is deeply appreciated and recognized.

If you would like to contribute, contact New Stage Theatre, P.O. Box 4792, Jackson, MS 39296-4792, (601) 948-3533.

SPONSORS

Our Season sponsors provide funding that makes it possible for us to achieve artistic excellence. We salute our 2025-26 season sponsors, and we encourage you to patronize these businesses.



SAM E. AND BURNICE C.
WITTEL FOUNDATION

LINDA AND JOHN
SCHMIDT

THE DORSEY J. BAREFIELD
CHARITABLE TRUST



New Stage programming is made possible with the support of:



THE SHUBERT
FOUNDATION INC.



NATIONAL
ENDOWMENT for the ARTS
arts.gov

THE BILL McCARTY III
FOUNDATION



THE CHISHOLM FOUNDATION

THE
FEILD
COOPERATIVE



NEW STAGE
Theatre

THE JANE REID PETTY THEATRE CENTER

1100 Carlisle • Jackson, Mississippi 39202

BOX OFFICE HOURS

Monday-Friday: 10:00 a.m. – 5:00 p.m.

*During performances, will remain
open until 7:00*

Saturday: 4:00 p.m. – 7:00 p.m.

Sunday: 1:00 p.m. – 3:00 p.m.

*Saturday and Sunday hours only apply
during the run of a show.*

TELEPHONE/WEBSITE

Main Number: (601) 948-3533

Box Office: ext. 222

Artistic Director: ext. 224

Managing Director: ext. 246

Marketing Director: ext. 225

Education Director: ext. 232

Website: www.newstagetheatre.com

Email: mail@newstagetheatre.com

New Stage Theatre is a Constituent of Theatre Communication Group (TCG),
the national organization for the American theatre.