

Seven generations  
have read this story.  
This one will sing it.



# LITTLE WOMEN

the  
broadway  
musical

Book by Allan Knee | Music by Jason Howland | Lyrics by Mindi Dickstein  
Based on the novel by Louisa May Alcott | Directed by Malaika Quarterman | Music Directed by Tim Moak

**March 25 – April 6, 2025** **NEW STAGE**  
FOR TICKETS 601-948-3533 OR [NEWSTAGETHEATRE.COM](http://NEWSTAGETHEATRE.COM)

*Theatre*

Sponsored by



Costume Designer  
Aryana Gaines

Properties Designer  
Joey Ford

Lighting Designer  
Matt Webb

Scenic/Projections Designer  
Samuel Sparks

Technical Director  
Richard Lawrence

Sound Designer & Engineer/  
Projections Engineer  
Alberto Meza

Production Stage Manager  
Mattea Pierce

Production Manager  
Casey Nelms

# LITTLE WOMEN

the  
broadway  
musical

LITTLE WOMEN is presented through special arrangement with Music Theatre International (MTI).  
All authorized performance materials are also supplied by MTI. [www.mtishows.com](http://www.mtishows.com)

## SETTING AND TIME

Concord, Massachusetts and New York City  
Christmas, 1863 – Spring, 1867

**Any video and/or audio recording of this production is strictly prohibited.**

*There will be one 15-minute intermission.*

*There will be use of theatrical fog during this production.*

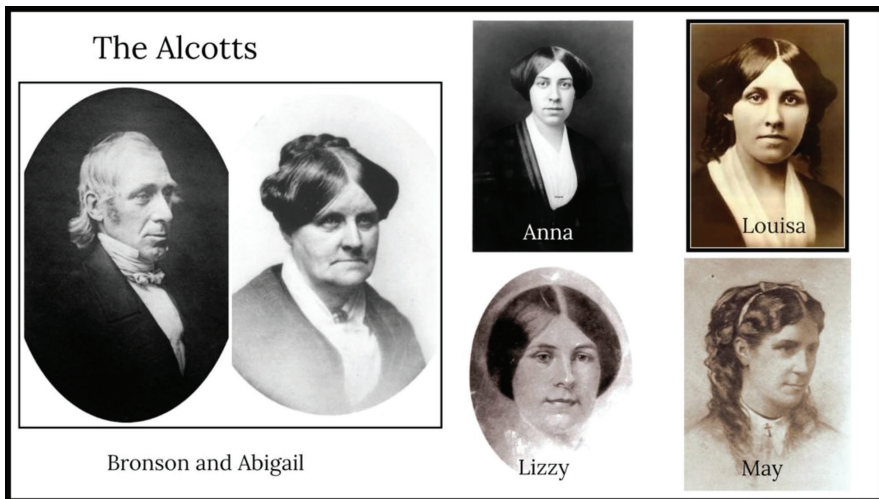
## A HISTORY OF *LITTLE WOMEN*

*Little Women* is one of the most cherished and enduring works in American literature, written by Louisa May Alcott. First published in two volumes in 1868 and 1869, the novel tells the story of the March sisters—Jo, Meg, Beth, and Amy—growing up during the Civil War in Massachusetts. With its universal themes of family, love, personal growth, and social change, *Little Women* quickly became beloved by readers around the world and remains one of the most widely read novels in the English language.

Alcott based the characters of the March sisters on her own experiences growing up with her three sisters, and her deeply personal connection to the story has resonated with generations of readers. The novel is both a coming-of-age story and a social commentary on the roles women played in 19th-century society, touching on themes like ambition, independence, and sacrifice.

Today, *Little Women* continues to be adapted and performed in theatres around the world, and the Broadway musical remains an essential part of its legacy. Its messages of love, family, and resilience speak as powerfully today as they did in the 19th century, and its characters continue to inspire people of all ages. With its rich history and timeless appeal, *Little Women* holds a special place in both literary and theatrical tradition, and this musical production brings a fresh, captivating interpretation to a classic story.

### PICTURE OF LOUISA MAY ALCOTT AND FAMILY



# MUSICAL NUMBERS

## ACT 1

### Scene One

Overture

An Operatic Tragedy . . . . . Jo, Clarissa, Braxton, Rodrigo, Professor Bhaer

Better . . . . . Jo

Our Finest Dreams . . . . . Jo, Beth, Amy, and Meg

Here Alone . . . . . Marmee

### Scene Two

Could You? . . . . . Aunt March and Jo

### Scene Three

I'd Be Delighted . . . . . Marmee, Meg, Beth, and Jo

Take a Chance on Me . . . . . Laurie

Better (Reprise) . . . . . Jo

### Scene Four

Off to Massachusetts . . . . . Beth and Mr. Laurence

Five Forever . . . . . Jo, Beth, Meg, Amy, and Laurie

### Scene Five

More Than I Am . . . . . Mr. Brooke and Meg

### Scene Six

Take A Chance on Me (Reprise) . . . . . Laurie

Astonishing . . . . . Jo

## Act Two

### Scene One

The Weekly Volcano Press . . . . . Jo, Professor Bhaer, Mrs. Kirk, Clarissa, Braxton,  
Rodrigo, Hag, Troll, Knight, Rodrigo II, and Company

### Scene Two

Off To Massachusetts (Reprise). . . . . Mr. Laurence, Beth, Laurie, Marmee,  
Meg, Mr. Brooke

How I Am . . . . . Professor Bhaer

### Scene Three

Some Things Are Meant to Be . . . . . Beth and Jo

### Scene Four

The Most Amazing Thing . . . . . Amy and Laurie

Days of Plenty . . . . . Marmee

The Fire Within Me . . . . . Jo

### Scene Five

Small Umbrella in the Rain . . . . . Jo and Professor Bhaer

Volcano (Reprise) . . . . . Jo

## THE CAST

Marmee March	Jennifer Smith
Jo March	Kristina Swearingen
Meg March	Michaela Lin
Beth March	Mary Frances Dean
Amy March	Sarah Pigott
Aunt March	Viola Dacus
Professor Bhaer	Tyler Bellmon*
Mr. Laurence	Ward Emling
Mr. John Brooke	Hosea Griffith
Laurie Laurence	Alex Burnette
Mrs. Kirk	Viola Dacus

### Operatic Tragedy Players/ Ensemble

Clarissa	Cameron Vipperman <sup>†</sup>
Braxton	Jacob Heuer <sup>†</sup>
Rodrigo	Slade Haney
Knight	Keith Allen Davis Jr <sup>†</sup>
Hag	Jamie Shannon Ferguson
Troll	Hannah Beth Rollman
Rodrigo II	Tatiana Grace <sup>†</sup>

### Undertstudies

Understudies never substitute for listed performers unless a specific announcement is made at the time of the performance. For Marmee – Jamie Ferguson Ertle; For Jo March and Meg March – Cameron Vipperman, For Beth March – Tatiana Grace, For Amy – Hannah Beth Rollman; For Professor Bhaer – Keith Davis; For Laurie – Slade Haney; For Mr. John Brooke and Mr. Laurence – Jacob Heuer; For Mrs. Kirk and Clarissa – Ashlyn Pinkerton; For Hag – Jennifer Smith, For Rodrigo II- Mary Frances Dean, For Troll – Sarah Pigott; For Knight – Ward Emling; For Braxton – Hosea Griffith; For Rodrigo – Alex Burnette

*\*Appears through the courtesy of Actors' Equity Association*

*<sup>†</sup>Indicates Associate Artist*



## AUTHORS

**ALLAN KNEE** (Book) is the author of the play *The Man Who Was Peter Pan*, which was the source for the film *Finding Neverland* (starring Johnny Depp and Kate Winslet), which received an Academy Award nomination for best picture, and the subsequent musical, currently touring the US. He wrote the book for the Broadway musical *Little Women* which premiered in Tokyo this fall, and will have a national tour in England next season. Among his other works are the four-part adaptation of *The Scarlet Letter* for the PBS, the dance drama, *Syncopation*, about the passion of two workers to become ballroom champions in 1914, which was awarded for best regional play, and *The Jazz Age*, which currently placed at the Playground Theatre in London. His latest work, *The Astonishing Times of Timothy Cratchit* (music by Andre Catrini) premiered this November at the Hope Theatre in Manchester, England. Allan is a graduate of the Yale School of Drama.

**JASON HOWLAND** (Music) an honors graduate of Williams College (1993), is a Grammy Award winning producer, Emmy Award winning arranger, and Tony nominated producer. He is the composer of Broadway's 2005 TONY nominated *Little Women - The Musical*. Howland was nominated for a Tony Award in 1999 for co-producing the *The Lonesome West* by Martin McDonagh, and won an Emmy Award in 2007 for creating and composing the Christmas special *Handel's Messiah Rocks* for the Boston Pops. He is the Arranger and Music Supervisor for the smash hit *Beautiful - The Carole King Musical* (Broadway, West End, US National Tour, Tokyo, Australian National Tour, UK National Tour) for which he won a Grammy Award; *Bonnie and Clyde*, *Wonderland*, *Jekyll & Hyde*, *The Civil War*, *The Scarlet Pimpernel*, in addition to music directing the mega-hit *Les Misérables*, and Boy George's *Taboo*. International projects as an arranger and orchestrator include Frank Wildhorn's stage adaptation of the Japanese Anime sensation *Death Note* for HoriPro, and two new shows *Mata Hari* and *The Man Who Laughs*. Recent theater projects include composing and orchestrating the original score for *Ikiru*, a new musical based on the Kurosawa film, that premiered in Tokyo, Oct 2018, *Last Days of Summer* (Kansas City rep), and *Paradise Square* at Berkeley Repertory Theater.

**MINDI DICKSTEIN** (Lyrics) is an award-winning lyricist, librettist, and playwright. She wrote lyrics for the Broadway musical *Little Women*, which has had productions across the USA and around the world, most recently in Tokyo, Japan, and Manchester, England. She is the lyricist for *Benny and Joon*, a new musical based on the MGM film, which had its world premiere at The Old Globe, San Diego, and east coast premiere at The Paper Mill Playhouse. *Benny and Joon* was developed at NAMT, Transport Group, Running Deer Musical Theater Lab, Goodspeed Johnny Mercer Colony, Theatreworks Silicon Valley, and the Rhinebeck Retreat. Among her other works are *TRIP* (book and lyrics), commissioned by Playwrights Horizons; *Toy Story - The Musical* (book), Disney Creative Entertainment; *Starving to Death in Midtown* (a short play), Climate Change Theater Action; *Beasts and Saints* (book and lyrics), Boston Music Theater Project; *The Existential Gourmet*, Jane Chambers Award; and *Guadeloupe*, Westbeth Theater Center. Mindi's songs have been performed widely, most notably as part of Lincoln Center's American Songbook ("Hear and Now: Contemporary Lyricists") and at the Kennedy Center. Awards and honors include: a Jonathan Larson Grant, Massachusetts Artists and New York Foundation for the Arts playwriting fellowships, ASCAP Workshop Bernice Cohen Award, Second Stage Constance Klinsky Award, and a PEN International New Playwright Award (selected by Wendy Wasserstein). She received her MFA from New York University's Graduate Musical Theatre Writing Program, where she was an Oscar Hammerstein Fellow.

**MUSIC THEATRE INTERNATIONAL (MTI)** is one of the world's leading theatrical licensing agencies, granting theatres from around the world the rights to perform the greatest selection of musicals from Broadway and beyond. Founded in 1952 by composer Frank Loesser and orchestrator Don Walker, MTI is a driving force in advancing musical theatre as a vibrant and engaging art form. MTI works directly with the composers, lyricists and book writers of these musicals to provide official scripts, musical materials and dynamic theatrical resources to over 100,000 professional, community and school theatres in the US and in over 150 countries worldwide. MTI is particularly dedicated to educational theatre, and has created special collections to meet the needs of various types of performers and audiences. MTI's Broadway Junior® shows are 30- and 60-minute musicals for performance by elementary and middle school-aged performers, while MTI's School Editions are musicals annotated for performance by high school students. MTI maintains its global headquarters in New York City with additional offices in London (MTI Europe) and Melbourne (MTI Australasia).

## THE CAST



**TYLER BELLMON\*** (Professor Bhaer) is excited to return to New Stage Theatre for *Little Women*. His favorite credits include the world primer of Elin Hilderbrand's *Winter Street* (Kevin Quinn; Theater Workshop of Nantucket), *Little Shop of Horrors* (Seymour; New Stage Theatre, Gretna Theatre), *Bright Star* (Billy Cane; New Stage Theatre), *Into The Woods* (The Baker; Theatre Workshop of Nantucket), *A Christmas Carol* (Bob Cratchit/Fred; The Hanover Theater), and *Biloxi Blues* (Eugene; Forestburgh Playhouse). Tyler holds a BFA in Musical Theatre from Emerson

College. He thanks New Stage for this opportunity, along with Ahren, his family, friends, and the HTA team for their unwavering support. Connect with him on social media @tylerbellmon.



**ALEX BURNETTE** (Laurie/ Rodrigo U. S.) is delighted to return to New Stage, recently seen as Jerry Lee Lewis in *Million Dollar Quartet Christmas* in 2024. National Tour: *Madagascar the Musical* (1st Nat'l), *A Charlie Brown Christmas*. NY Off-Broadway: *Rescue Rue*, *The Young Girl The Devil & The Mill*. Select Regional: Jerry Lee Lewis in *Million Dollar Quartet* at Alhambra, Surfflight, Saugatuck Center for the Arts, Arrow Rock Lyceum, New Stage. *Tesla Vs. Edison* (Center for Puppetry Arts). Swedish Cottage Marionette Theatre. Holland America Cruise

Line (Piano Bar), Cedar Fair Parks' *Haunt* writer/director. Marymount Manhattan College BFA. Thanks to Francine, Malaika, Tim, Mia, Mattea, Casey, and everyone at New Stage. Represented by Broad Talent. IG: @AlexBBurnette



**VIOLA DACUS** (Aunt March/Mrs. Kirk) was most recently seen at New Stage Theatre as Julia in *Lend Me a Soprano*. She has also appeared with New Stage as Princess Dragomiroff in *Murder on the Orient Express*, Mrs. Van Daan in *Diary of Anne Frank*, Emily Brent in *And Then There Were None*, Ouiser Boudreaux in *Steel Magnolias*, and Lady Bird Johnson in *All the Way* among others. As a concert soloist, Viola has performed throughout the Southern U.S., New York and London, as well as cities in Israel, Jordan, and Greece. She is Associate Professor of Music and Voice

Area Coordinator at Mississippi College, where she was the 2021 recipient of the Mississippi Humanities Council's Teacher Award.





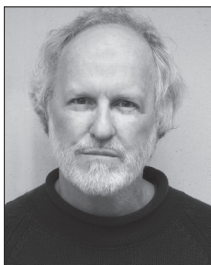
**KEITH ALLEN DAVIS, JR.**<sup>†</sup> (Knight/ Ensemble/ Professor Bhaer U.S.) is an actor, writer, musician, and director from Meridian, Miss. He recently received his Bachelor of Arts in theatre arts at Alabama State University. During his time at ASU, he has been cast in and worked on productions such as *Dreamgirls*, *The Wiz*, *Tracks*, *Slammin II*, and *Blues for An Alabama Sky*. He has also written for and co-directed *Montgomery*, Alabama's performance for the worldwide festival of The Walk (Little Amal) in 2023. Since graduating, he was cast

as Tim Allgood in *Noises Off* at New Stage Theatre. He hopes to continue to use all the tools he has acquired from Alabama State to propel him successfully into his professional career. Follow his music and acting pages on Instagram, @thebabyboykeith and @keithallendavisjr !



**MARY FRANCES DEAN** (Beth March/Rodrigo II U.S.) is honored to be a part of New Stage's *Little Women, the Broadway Musical!* She is a sophomore at Mississippi College, where she studies nursing and also participates in their theatre program, recently with the role of Anne in *Anne of Green Gables*. Frannie has been involved at New Stage since 2011, debuting as Molly in *Annie*. Other productions at New Stage include Postulant in *The Sound of Music*, Rebecca Gibbs in *Our Town*, Nancy in *A Christmas Story*, and the Children's Ensemble in *Matilda*. She is

excited to see what the future holds as she continues to perform and would like to thank the whole New Stage family for another wonderful opportunity on stage. She would also like to thank her parents and family for always encouraging her to pursue her love of the arts, and Christ, for from His heart flows all inspiration of wonder, art, and beauty.



**WARD EMLING** (Mr. Laurence/Knight U. S.) is a 1976 graduate of Millsaps College and trained at the Guildhall School of Music and Drama in London. Little Theatre of Jackson: *Jimmy Shine*, *A Funny Thing Happened on the Way to the Forum*. The Millsaps Players (under the direction of Lance Goss): *The Importance of Being Earnest*, *Hamlet*, *Robert and Elizabeth*, *Hotel Universe*, *The Lady's Not for Burning*. Mississippi Shakespeare Festival: *King Lear*. John Maxwell's *A Christmas Tale*. Fondren Theatre Workshop: *The Invention of Language*. New Stage: *Peg O My*

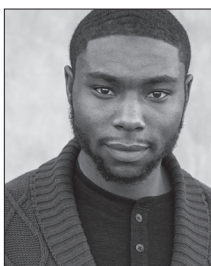
*Heart*, *The Little Foxes*, *As You Like It*, *The Pirates of Penzance*, the folk opera *The Ponder Heart*, *Shakespeare in Love*, *The Diary of Anne Frank*, *Sweat*, *Murder on the Orient Express*, *A Christmas Carol*, *9 to 5*, *The Sound of Music*, *The Secret Garden*, and *Gaslight*.



**JAMIE SHANNON FERGUSON** (Hag/Ensemble/ Marmee U.S./ Aunt March U.S.) is thankful to return to New Stage and work with this incredible team. She teaches voice and directs the musicals at Mississippi College. Past credits include: Poppy in *Noises Off*, Martha in *The Secret Garden*, Donna in *Mamma Mia*, Diana in *Next to Normal*. She teaches voice and directs the musicals at Mississippi College. She holds degrees in music and theatre from Mississippi College and The Boston Conservatory [jamieshannonferguson.com](http://jamieshannonferguson.com) @beltertrash



**TATIANA GRACE<sup>†</sup>** (Rodrigo II/Ensemble/ Beth March U.S.) is thrilled to be a part of the team at New Stage Theatre! Originating from Georgia, she received her Bachelor of Fine Arts in theatre performance at Columbus State University in Columbus, GA. Her favorite past productions include *Stupid F\*\*king Bird* (Mash), *Three Little Birds* (Cedella), *Into the Woods* (Jack's Mother), and *Lady Day at Emerson's Bar & Grill* (Billie Holiday). She would like to thank her friends, family, and professors who have helped and supported her along the way.



**HOSEA GRIFFITH** (Mr. John Brooke/Braxton U.S.) is a graduate of the University of Mobile (M.M.) and Mississippi College (B.M.). He has had the pleasure of portraying many roles in Jackson and the surrounding areas, including *Sister Act*, *Bright Star*, and *A Christmas Carol* (New Stage Theatre). Recently, Hosea was seen in *Songs of a New World* (Uproar Theatre), *The Color Purple* (Jackson State University), *9 to 5*, *Chicken and Biscuits*, and *Beautiful* (New Stage Theatre) as well as various workshops and concert readings of the musical play *Slippin'*

*Through the Cracks* in Jackson (New Stage Theatre), New York, and Chicago (Goodman Theatre).



**SLADE HANEY** (Rodrigo/Ensemble/Laurie U.S.) is honored to be a part of New Stage's *Little Women, the Broadway Musical!* He is a junior at Mississippi College, where he studies Biology Pre-Medicine and Psychology. Slade is making his New Stage debut and is excited for the opportunity to perform with such an established company and cast. His prior credits are from The Donoho School in Anniston, AL, such as, Adam in *Children of Eden*, Cinderella's Prince in *Into the Woods*, Scar in *The Lion King*, and Prince Eric in *The Little Mermaid*. He is excited for

future opportunities to perform and wants to express his gratitude and appreciation to the entire New Stage family. He would also like to thank his parents and friends for encouraging his performance desires, as well as Jesus Christ for His blessings and love that extends to everyone. Follow Slade on all social media platforms. @slade.haney

## actor chat

Stay and meet the cast after *Little Women* following the show on Wednesday, March 26, and Thursday, April 3, after the evening performance. Audience members may ask questions of the actors, director and designers in an informal setting.



**JACOB HEUER**<sup>†</sup> (Braxton/ Ensemble/ Mr. John Brooke U.S./ Mr. Laurence U.S.) graduated from the University of Mississippi with a BFA in acting for the stage and screen. In college, he starred in several UM Theatre productions, including performing as Mr. Mushnik in *Little Shop of Horrors*, The Baker in *Into the Woods*, G/Zeus in *Polaroid Stories*, Mr. Callahan in *Legally Blonde*, Robert in *Boeing Boeing*, and Mr. Laurence in *Little Women the Musical*. In the summer seasons of 2023 and 2024, he performed professionally as Ali Hakim in *Oklahoma!* and as Oliver Hix in

*The Music Man* at the Gertrude C. Ford Center for the Performing Arts. Heuer has spent the last year working as an acting intern at the Florida Repertory Theatre in Fort Myers, Florida, and is looking forward to working with a new group of artists at New Stage Theatre.



**MICHAELA LIN** (Meg March) is thrilled to be returning to New Stage! Previous New Stage credits: *Secret Garden the Musical Spring Version*, *Hell and High Water* and *A Christmas Story: The Musical*. She has recently been seen at Laurel Little Theatre as Judy Haynes in *White Christmas the Musical*, Abby in *Ripcord*, and Portia in *Something Rotten*. She has her BFA in Musical Theatre from Belhaven University. Some past favorite roles include: Hermia in *A Midsummer Night's Dream*, Baker's Wife in *Into the Woods* and Audrey in *Little Shop of Horrors*.

She also directs and choreographs in the greater Jackson area and is currently choreographing *Wizard of Oz: Youth Version* at Christ Covenant School. She also serves on the board at Laurel Little Theatre.



**SARAH PIGOTT** (Amy March/ Troll U.S.) is a native of Germantown, Tennessee. She holds both a B.M. and an M.M. in voice performance and pedagogy from Mississippi College. Some of her favorite roles have included Pamina (*Magic Flute*), Magnolia (*Show Boat*), and John the Baptist/Judas (*Godspell*). She currently teaches voice and is the opera stage director at Mississippi College. She also co-hosts the VocalFri podcast. She is excited to be a part of this amazing cast and crew!



**ASHLYN PINKERTON**<sup>†</sup> (Mrs. Kirk U.S./Clarissa U. S./Assistant Director) is a 2024 graduate from Belhaven University with a B.A. in theatre performance. She was born and raised in Brandon, Mississippi. Her previous performance roles include *A Lovely Sunday for Creve Coeur* (Dorothea) and *Suite Surrender* (Murphy) at Belhaven University. She made her directing debut at Belhaven with her spaghetti western adaptation of *The Marriage Proposal* by Anton Chekhov. Pinkerton is pursuing a career in film acting and directing. She is thrilled to be a part of New Stage's team.



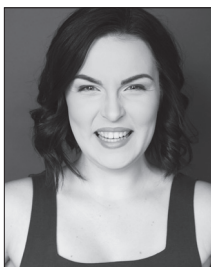
**HANNAH BETH ROLLMAN** (Troll/Ensemble/Amy U.S.) is thrilled to make her New Stage mainstage debut! She has previously performed in their Unframed seasons as Suze in *Fairview* and Maeve in *The Grown-Ups*. She is a recent graduate of Belhaven University, where she earned degrees in Theatre Performance and Biology. Her favorite roles at Belhaven include Susy in *Glimpses of the Moon*, Gwendolen in *The Importance of Being Earnest*, and Claudia McFadden in *Suite Surrender*. She has also performed with Opera Mississippi in the chorus of *Die*

*Fledermaus*. Hannah Beth would like to thank both God and her wonderful husband for his loving support.



**JENNIFER SMITH** (Marmee March/ Hag U. S.) Thank you New Stage Theatre for this wonderful opportunity! Favorite NST roles include: Grace Farrell (*Annie*), Featured Performer (*Ring of Fire*), Mrs. White (*Clue: On Stage*), Raven/Ensemble (*The Robber Bridegroom*), and Creda (Leslie Jordan's *Glory! Glory!*). Jennifer has enjoyed working with Uproar Theatre Company, The Center Players, and FishTale Group Theatre in the Jackson Metro area. Other favorite roles include: Nancy Baxter (*'Twas the Night Before Christmas*, Dollywood); Mrs. Potts (*Disney's Beauty and*

*the Beast*, international tour); Bank Manager (*Once*, Casa Mañana); and Diane (*Come From Away*, Rocky Mountain Repertory Theatre). Jennifer's EP, *Inside Out*, takes an intimate look at loss and grief. Special thanks to Chris, Dylan, and my family for their love and support!



**KRISTINA SWEARINGEN** (Jo March) is a NYC-based theatre artist whose theatrical toolbox is overflowing. This Mobile, AL native brings a versatile skillset to every project, from musical theatre to Shakespeare, choreography, scenic design, and even stage combat (she's an intermediate actor combatant). Kristina's ultimate goal? To perform professionally in all 50 states. Her experience includes work with companies like Hudson Classical Theatre Company, The Lost Colony, and Dollywood. Follow her adventures @swearingen\_kb



**CAMERON VIPPERMAN**<sup>†</sup> (Clarissa/Ensemble/Jo March U.S./ Meg March U.S.) is one of three ambitious and uniquely gifted sisters and thus is thrilled to bring you this story that feels like home to her. After graduating with her B.A. in theatre from Winthrop University in May 2024, Cameron joined New Stage's 2024-2025 Artistic Associates in August and has since performed in *Noises Off* (Brooke), understudied for *Gaslight* (Nancy) and *Million Dollar Quartet Christmas* (Dyanne), and toured in *A Year With Frog and Toad* (Frog), *Hamlet* (Horatio/Polonius), and *We Shall Not Be Moved: Courage in MS* (Joan Trumpauer). She also recently made her directorial debut with the Unframed production of *The Moors!* Other favorite credits include *Pippin* (Catherine), *Sweeney Todd* (Johanna), and *The Wizard of Oz* (Dorothy). Love to family and friends in the audience! Micah 6:8

## PRODUCTION TEAM

**MALAIKA QUARTERMAN** (Director) was last seen at New Stage in the productions of *Gaslight*, *Sweat*, *A Christmas Carol*, *Sister Act*, *Our Town*, *The Great Gatsby*, and *Annie*. She has had the privilege of choreographing New Stage's *Cabaret Rising Toward a New Day* and *Little Shop of Horrors*. Quarterman has received Theatre and directorial training from New World School of the Arts, Belhaven University, and Regent University. Some of her favorite directorial credits include *The Last Days of Judas Iscariot*, *The Laramie Project*, *Bottle Tree*, and *Braids*. She resides in Jackson with her wonderful family Nate, Kendra, Rivka, and Logan to whom she is incredibly thankful for their support, love, and enthusiasm during this production. When she is not at New Stage, Quarterman can be found acting, directing, and serving on the board of sister organization Fondren Theatre Workshop, as Chapter Director for Mississippi Thespians, and lead arts teacher with Jackson Public Schools at Wells APAC.

**TIM MOAK** (Music Director) lives in Madison, and greatly enjoys being part of New Stage productions, musicals, and other special events. Moak received both bachelor and master of music degrees from Mississippi College. He has served as a public school music educator, piano teacher, church music minister, accompanist, choral clinician and adjudicator. Moak is Vice President of Operations at TempStaff. He is thrilled to be working with this very talented cast.

**SAMUEL SPARKS** (Scenic/Projections Designer) is an Assistant Professor of Theatre at Millsaps College. Some of the shows he's designed for New Stage include *Secret Garden: Spring Version*, *A Year with Frog and Toad*, *A Soldier's Play*, *Annie*, *A Christmas Carol*, *Alexander and the Terrible, Horrible, Very Bad Day*, *Moonlight and Magnolias*, and *Crowns*. He has a B.A. in theatre from Millsaps College and an M.F.A. in theatre with an emphasis in directing from the University of Houston.



**MATTEA PIERCE** (Production Stage Manager) is a graduate of Belhaven University with degrees in both theatre and graphic design. Past New Stage credits for Stage Management include: *Million Dollar Quartet Christmas*, *Gaslight*, *Noises Off*, *Beautiful: The Carole King Musical*, *Lend Me a Soprano*, *What the Constitution Means to Me*, *Elf The Musical*, *The Secret Garden*, *Chicken & Biscuits*, and *Ring of Fire* (ASM). She is excited to be a part of New Stage's 59<sup>th</sup> Season – Your Place for Broadway Shows.

**RICHARD LAWRENCE** (Technical Director) serves as the parliamentarian of Fondren Theatre Workshop and has appeared in *A Christmas Memory* at New Stage, FTW's *The Rocky Horror Show*, *Buck Nekkid for Jesus*, directed FTW's *Every Christmas Story Ever Told*, and most recently appeared as Trekkie Monster in *Avenue Q*. He was also the director of the widely successful productions of *Cabaret* and *Company*, which were joint productions of FTW and Actor's Playhouse of Pearl, with support from New Stage. Lawrence has been seen in New Stage productions of *The Trip to Bountiful* and UnFramed's *The Eight: Reindeer Monologues*, *How I Learned to Drive*, *The Weir*, *Circle Mirror Transformation*, and *Dublin Carol*. Lawrence has won three Best Set awards at Mississippi Theatre Association conferences, and has also won Best Set at Southeastern Theatre Conference.

**ARYANA N. GAINES** (Costume Designer) is a costume designer and technician specializing in historical costume, dancewear, and contour garment construction. She recently served as a guest artist at Austin Peay State University, designing and constructing corsets for *Intimate Apparel* by Lynn Nottage and leading a workshop on corset draping. From 2021 to 2023, she was the resident Draper at the Nashville Ballet, contributing to acclaimed productions such as *Un Ballo* and the nationally televised *Black Lucy and the Bard*. Aryana earned an MSc in Contour Fashion Innovation from De Montfort University in Leicester, UK, where she won the prestigious Roadley Award for Sustainable Design, and a BFA in Costume Design and Technology from the University of Mississippi (Ole Miss), where she designed *Legally Blonde: The Musical*. Her 2020 costume design for *Near/Far: A Zoom Production* at Ole Miss was selected for the U.S. submission to the 2023 Prague Quadrennial. She also completed a costume stitching apprenticeship as part of Santa Fe Opera's award-winning 2022 summer season, including the world premiere of *M. Butterfly*.

**MATTHEW WEBB** (Lighting Designer) is excited to return to New Stage again this season, having just created the lighting for *The Mountaintop*. For New Stage, Matt has also lit *Beautiful*, *Clue*, *9 to 5*, and *I Just Stopped By to See the Man*, and, regionally, he's designed with Arkansas Rep in Little Rock, Playhouse on the Square in Memphis, and Cumberland County Playhouse in east Tennessee. Elsewhere, Matt's worked with Seattle Rep, Arden Theatre, Asolo Rep, Houston Symphony, Syracuse Stage, Seattle Children's Theatre, the Contemporary American Theater Festival, ZACH Theatre, and many others. A proud Mississippi State University alum and former faculty member, Matt is currently the Assistant Professor of Lighting Design at the University of Houston, and he holds an MFA from the University of Washington. [www.mwebbdesign.com](http://www.mwebbdesign.com)

**ALBERTO MEZA** (Sound Designer & Engineer/Projections Engineer) is a graduate of Belhaven University with a BFA in Theatre. He is from Brandon, MS and is grateful to work in the only professional regional theatre in Mississippi. He began working with New Stage Theatre in 2020 and has continued to work in multiple positions over the recent years. Some of his regional design credits for both Sound and Projections include: *Pipeline*, *Little Shop of Horrors*, *A Christmas Carol*, *A Curious Incident of the Dog in the Nighttime*, *Clue*, *Every Brilliant Thing*, *Ring of Fire*, *Elf The Musical*, *Chicken and Biscuits*, *Beautiful*, *Gaslight*, *Million Dollar Quartet Christmas*, and *The Mountaintop*. He worked with Belhaven University Theatre as their professional guest artist as the Sound Engineer/Designer for their main stage productions, *Wizard of Oz*, *The Spitfire Grill*, and *Cinderella*. He also had the opportunity to be the Lighting Designer in New Stage Theatre's production of *Gaslight*. He was able to Light Design with Hinds CC on their show *Radium Girls* and was able to work as a guest Technical Director at Wells APAC for their dance program, *Rodeo*. Meza was the streamer and editor behind the Thursday Night Virtual Plays, *Conversations*, & *Cocktails* that was presented over the virtual season at New Stage Theatre.

**JOEY FORD** (Properties Designer) was born in Atlanta and raised in Salt Lake City UT. He is a born problem solver and a maker by trade. In addition to fabricating sets and props for New Stage, Joey works as a prop maker and production assistant on high-definition film shoots and has solid computer and audio/video skills. When not at New Stage, he is a practiced fire breather and bakes apple pies from scratch.

**MATTHEW MCMURTRY** (Lead Electrician) is a recent graduate of Belhaven University. His recent work with New Stage includes *Every Brilliant Thing*, *The Glass Menagerie*, *Clue*, and *9 to 5: The Musical*. He served as the lighting designer for New Stage's summer camp productions of *Frog and Toad*, *Kids* and *Children of Eden*, Jr. McMurtry has also served as lighting designer for Belhaven University's productions of *Steel Magnolias* and *The Burial at Thebes*.

**NINA FROST** (Costume Shop Supervisor) is from Jackson and is a graduate of Belhaven University with a B.A. in theatre. This is her third season with New Stage, but first as the costume shop manager. Previously, she worked as a stitcher and wardrobe supervisor on several past shows including *Clue*, *The Glass Menagerie*, *The Sound of Music*, *Fences*, *Lend Me A Soprano*, *Elf: The Musical*, and *Beautiful: The Carole King Musical* among others. Some of her past credits include *The Wizard of Oz*, *Pride and Prejudice*, *Silent Sky* (Belhaven University), *She Loves Me*, *Mamma Mia!*, and *Almost, Maine* (New London Barn Playhouse). Frost's most recent credit was costume designer for the Unframed Series production of *The Grownups*, and also costume designed *Finding Nemo Kids* and *Sister Act, Jr.* this past summer. Enjoy the show!

**CASEY NELMS** (Production Manager) is a proud Mississippian born and raised in Pearl, Miss. She received her Bachelor of social work from Belhaven University followed by her master's of social work from the University of Southern California. While living in Los Angeles, she transitioned from a robust therapy career to producing and supervising

productions in the film industry. Nelms has been fortunate enough to work with companies such as Lionsgate, Patriot Pictures, and Convoke Media, as well as many others, and now happily serves as production manager at New Stage Theatre. She lives on the Ross Barnett Reservoir with her husband and their two droopy-faced beagles, Olive and Mabel.

**CALLIE JACKSON** (Production Associate/Sound Assistant) is a graduate of Mississippi State University with a B.A. in Political Science and is from Madison, MS. She began working with New Stage Theatre in 2024 as a sound board operator and is now working Little Women as a full time production staff member. Her regional credits include: *Noises Off*, *Million Dollar Quartet Christmas*, and *The Mountaintop*. She worked with Center Players Community Theatre as the Sound Designer/Engineer for 6 years. Some of those shows include; *Oklahoma*, *Bye Bye Birdie*, *Newsies*, *Into the Woods*, *Clue*, and *Grease*. She is excited to be continuing her passion of theatre with New Stage Theatre and is grateful for the opportunity. She will be taking over as the resident Sound Designer and Engineer in the next season. She would like to thank Alberto Meza for taking the time to train her and prepare her to take over.

**MICHAEL MONTGOMERY** (Production Associate/Charge Artist) is originally an artist and actor from Mobile, AL. He moved to Jackson to receive a BA from Millsaps College where he studied Studio Art, Music and Creative Writing. There, he performed in multiple shows, his favorite production being David Ives's *All in the Timing: Sure Thing and The Universal Language* which was directed by Sam Sparks. His more recent performances come from the New Stage's Unframed Series, most recently the role of Mack from *Fairview*. His most recent role on the New Stage mainstage would be his reading as Zeus in *Sons of Levi*. He has primarily served as a set painter for New Stage since 2023 which has included the following shows: *Johnny Cash*, *Lend Me a Soprano*, *What The Constitution Means to Me*, *Elf The Musical*, *The Secret Garden: Spring Version*, *Chicken & Biscuits*, *Junie B. Jones the Musical*, *Noises Off*, *Gaslight*, *Million Dollar Quartet*, *The Mountaintop*, and Unframed's *Is God Is*, *The Grown Ups*, and *The Moors*. He is currently creating his personal art exhibition that will be displayed in the Art Center of Mississippi this December.

CREW

Assistant Director /Light Board Operator	Ashlyn Pinkerton†
Sound Board Operator	Callie Jackson
Wardrobe	Nina Frost
Wig Designer/Wardrobe	Sarah Proctor
Construction	Dave Ellis, Joey Ford, Darby Frost, Ness Keogel, Jimmy 'JR' Robertson
Running Crew	Michael Montgomery
Costume Assistant/Wardrobe	Stephanie Gall
Stitchers	Stephanie Gall, Ruth Dental, Dolly Jones, Rosie Levy, and LaTrenda Hudson
Lead Electrician	Matthew McMurtry

† Indicates Associate Artist

## THE ADMINISTRATIVE STAFF

**FRANCINE THOMAS REYNOLDS** (Artistic Director) has been the artistic director at New Stage since 2006 and has worked as a theatre artist for 37 years. She recently directed *Noises Off*, *Gaslight*, *Beautiful*, *The Carole King Musical*, *The Secret Garden*, *Every Brilliant Thing*, *The Sound of Music*, *The Curious Incident of the Dog in the Night Time*, *I Just Stopped By to See the Man*, *The Debate for Democracy*, *Pipeline*, *Bright Star*, *Hell in High Water*, *Sweat*, *Shakespeare in Love*, *Silent Sky*, and *Best of Enemies*. Favorite acting roles include Dr. Katherine Brandt in *33 Variations*, Polly in *Other Desert Cities*, Lucille in *Dividing the Estate*, and Edna Earle in Eudora Welty's *The Ponder Heart*. She has directed a variety of shows including *All The Way*, *The Whipping Man*, *The Grapes of Wrath*, *Our Town*, *Red*, *Who's Afraid of Virginia Woolf?*, *Hairspray*, *Mahalia: A Gospel Musical*, *The Great Gatsby*, *Lombardi*, *Boeing, Boeing*, *A Christmas Carol*, *Gee's Bend*, *A Raisin in the Sun*, *Annie*, *A Soldier's Play*, and *I Love You, You're Perfect, Now Change*. Reynolds is a 2022 recipient of a Directing Fellowship from the Mississippi Arts Commission. She served three terms on the board of directors for the Theatre Communications Group (TCG) and several terms on the Mississippi Theatre Association Board of Directors. Reynolds has served on grant panels for the National Endowment of the Arts and the Mississippi Arts Commission and has enjoyed adjudicating for Poetry Out Loud and the Southeastern Theatre Conference. She was a speaker for the 2021 Story State, [www.storystate.msstate.edu](http://www.storystate.msstate.edu), produced by Mississippi State University. Recently she served as a member of the 2025 Governor's Arts Awards Selection Committee for the Mississippi Arts Commission. Originally, from the Upper Peninsula of Michigan, Reynolds enjoys living in Jackson with her husband, Chuck.

**DAWN BUCK** (Managing Director) has worked on staff at New Stage for more than 20 years. She began her career at New Stage in the fall of 1981 as a box office assistant. Since that time, she has worked as box office manager, audience services director, house manager, bookkeeper, business manager and marketing director. Buck's other professional artistic credits include the USA International Ballet Competition, the Thalia Mara Arts International Foundation – World Performance Series presenting a series of performing artists including American Ballet Theatre, Aquila Theatre of London, Joshua Bell, Alvin Ailey, Cirque Eloize, Wynton Marsalis, and the Lincoln Center Jazz Orchestra. She attended Belhaven University and is an alumnus of Leadership Jackson and a graduate of Dale Carnegie. Buck also completed a residency on theatre management at the Eugene O'Neill Center through a grant from the Foundation for the Extension and Development of Professional American Theatre (FEDAPT). Prior to serving on the staff of the USA International Ballet Competition, she worked with America Reads - Mississippi overseeing and training 270 AmeriCorps members who provided one-on-one tutoring in reading for students in primary K through the 3rd grade across the state. Buck also worked with Imageworks - Films for Business, assisting with the production of commercials, documentaries and training videos. She resides in the Heatherwood neighborhood with her husband David and has two sons who live in the big "N" cities of New York and Nashville.

**BILL MCCARTY III** (General Manager), a graduate of the University of Mississippi, has extensive background in wholesale and retail sales and real estate property management with the Jitney Jungle supermarket chain. The company was founded by his Grandfather Will McCarty and two Holman cousins in 1919. The families grew the business into a profitable billion dollar Mississippi-based company led by Bill McCarty Jr, his father, Henry Holman and many talented associates which sold in 1996. During his grocery career, Jack Stevens and Ivan Rider recruited Bill in 1973 to run a follow-spotlight for *The Gershwin Show* at the theatre's original Gallatin Street location. He has continued to volunteer with New Stage for more than 51 years in all areas including production, lighting and sound design, back-stage, and for New Stage fundraising events. He is involved in the day-to-day management, maintenance, and production for the theatre and serves on the Board of Trustees as a lifetime member. His favorite design credits are *A Christmas Carol* (1984), *Greater Tuna* (1986), *The Gin Game* (1987), and *A Streetcar Named Desire* (1990).

**MELISSA TILLMAN** (Director of Business Services) is a graduate of Belhaven University where she received a B.A. in technical theatre. She served as the audience services director and marketing director at New Stage, has worked as a box office associate at Lawlor Events Center in Reno, Nevada, and assisted with many box office activities at Belhaven University. Tillman has stage managed many shows in several parts of the country, including Las Vegas and Tennessee. Her stage managing credits include *Oklahoma!*, *Meet Me in St. Louis*, *The Wizard of Oz*, *Taming of the Shrew*, and *Love's Labours Lost*; and *Noye's Fludd* and *La Boheme* with the Mississippi Opera. This is Tillman's nineteenth season with New Stage. She currently resides in Madison with her husband, Kyle, their son, River, and their dog Vash.

**MIA MCELROY** (Marketing Director) is from Jackson, Mississippi. She has a BFA in acting and certification in film & TV production management. Her career journey includes performance, event coordinating, film production, and marketing/ promotions. Although this is her first year working at New Stage as an adult, she has many fond memories of being in different New Stage holiday and summer productions as a child. She is elated to be joining the New Stage family once again and is super excited for this amazing season.

**BETTY WONG** (Box Office Assistant/Education Assistant) begins her 18th season at New Stage. She continues to enjoy traveling to schools and towns throughout the state with the Associate Artists Company to provide live theatre experiences for students and adults of all ages. When not on the road, you can find her in the box office. She has also served for many years as a volunteer in other areas of the theatre. Her professional work experiences in education and her passion for live theatre have contributed to the growth and expansion of New Stage's Education Department. She has served as a consultant to school districts throughout the state of Mississippi. Wong has a B.S. in educational psychology from Mississippi State University, a M.Ed. from Delta State University, and recently won the 2019 Exemplary Arts Service Award from the Mississippi Alliance for Arts Education.



**MAHRI MCLEAN** (Box Office Manager) graduated in 2023 from Belhaven University with a BA in Theatre Performance. This is her third season working with New Stage in various capacities, and she is so grateful for the opportunity to work in live theatre every day. Previous acting and production credits include *The Secret Garden* (Lily u/s), *A Lovely Sunday For Creve Coeur* (Costume Designer), *The Spitfire Grill* (Shelby Thorpe), *The Burial at Thebes* (House Manager), and most recently, *When We Were Young and Unafraid* (Mary Anne, Costume Designer). Mahri is originally from the outskirts of Denver, Colorado, and loves to brag about her five siblings back home, and her wonderful partner Corey.

**CARLA MARSH** (House Manager) received her B.A. in criminal justice with an emphasis in juvenile justice from Jackson State University. She is pleased to be returning to New Stage for her twenty-first season. Marsh is employed full-time with the Hinds County Sheriff's office.

## ACKNOWLEDGEMENTS

The staff of New Stage Theatre wishes to thank the following individuals and companies for the generous donation of time and resources to this production and the 59th season.

Antique Aly	Davaine Lighting	Allison Simmons	Kayla Thompson
Austin Peay State	Hannah Fields	Amy Smith	University of
University	James Kennedy	Jimmye Sweat	Mississippi
Belhaven University	Zach Mason	Connie Taylor	Visit Jackson
Brown's Fine Art &	Millsaps-Wilson	Olivia Taylor	Wells APAC
Framing	Library	Theatre Memphis	Elementary
Greg Campbell	Ron Rodenmeyer	The Orchid Bed &	
Millsaps College	Chris Roebuck	Breakfast	

## NEW STAGE THEATRE BOARD OF TRUSTEES

Aaron Hill President	Nora Katz	Carol Taff
Kim Griffing Porter, Vice President	Laura Miller Marks	Christian Vance
Jennifer Chance, Treasurer	Bill McCarty III*	Lydia West
Julia Young, Secretary	Sammy Moon	<b>Advisory Board</b>
Barbara Austin*	Luther Munford	Nicole Bradshaw
Patti Carr Black*	Margaret Pigott	Portia Espy
James K. Child, Jr.*	Sam Pote	Oleta Fitzgerald
Christyl Erickson	Malaika Quartermann	Myrna Colley Lee
Stacey Gaines	Rod Red	Robert Lesley
Justis Gibbs	Julius M. Ridgway, Jr.	*Lifetime Member
Susan Hart	Linda Schmidt	
	Betty Smithson	
	John Spann	

COMING  
NEXT

# COME FROM AWAY

Book, Music, and Lyrics by Irene Sankoff and David Hein

May 27 – June 8, 2025

**Celebrate the best of humankind  
and the best in all of us.**

Broadway's ***Come From Away*** takes you into the heart of the remarkable true story of 7,000 stranded passengers and the small town in Newfoundland that welcomed them. Cultures clashed and nerves ran high, but uneasiness turned into trust, music soared in the night, and gratitude grew into enduring friendships.

# Browns Fine Art is thrilled to partner with New Stage Theatre

for a special exhibition showcasing the incredible talent of women artists from Mississippi and the Southeast. This captivating display highlights the diverse styles, and perspectives of twelve outstanding artists, each bringing their unique vision to life.

## About the Artists

**Michelle Allee's** artwork explores themes of resilience and personal power through androgynous figures, using textured layers to evoke emotions and invite viewers to see themselves or their loved ones in each piece.

**Vicki Armstrong's** watercolor paintings, often featuring water and boat scenes, capture the challenge of coaxing her medium to align with her vision, resulting in captivating, award-winning works that reflect her mastery of the craft.

**Martha Rea Baker's** watercolor paintings blend landscape and abstraction, immersing viewers in misty, dreamlike environments where light, color, and texture unfold layer by layer, inviting personal discovery.

**Lisa Busby's** artwork, spanning from vibrant portraits and still-lives to whimsical abstracts, captures the interplay of light and shadow, bringing her detailed studies of live subjects to life through paint.

**Jackie Ellens'** expressive abstracts and landscapes, inspired by her travels and life in Mississippi, offer a personal exploration of both the inner and outer worlds, blending vivid imagery with emotional depth.

**Kit Whitsett Fields**, a Jackson native, creates expressive paintings in watercolor, oils, and acrylics, with her work being featured in regional shows and celebrated for its inclusion as the official poster for the 2018 USA International Ballet Competition.

**Chatham Kemp**, an art instructor at William Carey University, creates art deeply rooted in

her southern Mississippi upbringing, with a focus on both teaching and producing work that reflects her lifelong dedication to the arts.

**Rachel Busler Misenar's** paintings, inspired by her deep connection to the natural world, explore intricate ecosystems and organic patterns, using layers of acrylic, ink, and watercolor to capture the beauty of plants and their environments.

**Angelika Robinson**, originally from Dushanbe, Tajikistan, and now residing in Noxapater, Mississippi, creates serene oil paintings inspired by the tranquil landscapes surrounding her, evoking a sunlight-filled world where a strong sense of tranquility and harmony prevails.

**Martina Sciolino's** abstract acrylic paintings, inspired by the layering found in nature, dissolve traditional landscapes into evolving improvisations of color, form, and markings, exploring the mysteries of perception and the shifting emergence of shapes from space.

**Anna Weaver Sistrunk**, a multidisciplinary artist, expresses her deep passion for the natural world through painting, pottery, sculpture, and illustration, infusing each piece with whimsy and vibrant color to reflect her love for animals and the beauty around her.

**Carol Sneed's** vibrant, impressionistic oil paintings, ranging from landscapes and street scenes to still lifes and abstracts, are infused with rich texture and spontaneous brushwork, drawing inspiration from her travels and her background in interior design.



SAVE THE DATE  
APRIL 24, 2025



**Find us on Facebook  
and Instagram**

or sign up to receive our newsletter at [newstagetheatre.com](http://newstagetheatre.com)  
to get updates on events, casting, and more!



NEWSTAGEED

# SUMMER THEATRE CAMPS 2025

Camps for RISING  
2ND GRADERS to  
GRADUATING  
SENIORS!

## FIRST STAGES CAMP

Rising 2nd to 6th Graders

June 2 - 13 (2 weeks)

Mon-Fri: 9am - 12pm or

1:30pm - 4:30pm

\$275 Before May 3

Shows Selection:

***Lion King KIDS***

## BROADWAY JR CAMP

Rising 6th to Graduating

12th Graders

June 16 - July 13 (4 weeks)

Monday - Friday 9am - 4pm

\$600 Before May 3

SHOW SELECTION:

***Lion King, Jr.***





# 2024-2025 SEASON CONTRIBUTORS

It all begins here. The following individuals, corporations and foundations have made generous contributions to New Stage Theatre. Their gifts provide a major portion of the funding necessary to present the productions you enjoy on our stages, the educational programs we offer and help the theatre maintain its standing as one of the nation's best professional regional theatres. Please take a moment to read the list. They deserve your recognition.

## **Grand Benefactor (\$2500+)**

Barbara Austin  
Kathy Davis  
Ali and John Dinkins  
Estate of Peggy Jeanes  
Fountain Family Foundation  
Frascogna Family Foundation  
Don and Becky Potts  
Ronald Frith  
Betty and Lee Smithson  
Carol Taff  
Marcy Petrini and Terry Dwyer  
Paul Vanderberry

## **Benefactor (\$1000-\$2499)**

Gayle and Holmes Adams  
Paula Graves Ardelean  
Dawn and David Buck  
Rick and Ann Calhoon  
ChemFirst/First Mississippi Corporation  
Jim and Sibyl Child  
Larry and Sara Cox  
David Crosby  
Ron and Cricket Erickson  
Lynn Crystal – Elaine and Emanuel Crystal Family Fund  
Peter and Mireille DeBeukelaer  
Mark and Kit Fields

Jan Garrick  
Bill and Kathleen Geary  
Susan and Macy Hart  
Tish and Haden Hughes  
Brent Lefavor  
Danny Marks and Laura Miller Marks  
Modena Martin  
Michael T. McRee  
Luther and Ginnie Munford  
Coby Parker and John Stringer  
Mary Purvis  
Julius and Stephanie Ridgway  
George and Ann Schimmel  
Sally and Bill Thompson  
Gloria Walker  
Kathryn Wiener  
James and Kathleen Young  
Julia Marks Young  
Steve and Chris Zachow

## **Arch Angel (\$500-\$999)**

Virginia and David Allen  
David Bowen  
Mary Helen and Bo Bowen  
Kitty and Drew Bryant in honor of Bill McCarty III  
Jennifer Chance  
Drs. Tim and Cheryl Coker  
Peggy Coleman  
Rusty and Ali Comley

Bill and Myra Cook  
Tam and Nora Etheridge  
Beckie and Richard Feldman  
Tina Fortenberry  
Cecil Fox  
Stacey and Earnest Gaines  
Bob and Alice Gorman  
Denise Halbach  
Jim and Beverly Herring  
Dr. Barb Kleiss and John Files  
Aaron and Lori Hill  
Rebecca Ivison  
Rathi Iyer  
Mary Jabaley  
Nora Katz  
Monika and Walter Knepper  
Shae and Jim Lowery  
Kathy Mahloch  
Sammy Moon  
Fred Morris III in memory of Virginia Morris  
Jan Mounger  
Ted and Donna Orkin  
Frank Parent  
Alice Paysinger  
Carol and George Penick  
Margaret and Brad Pigott  
Sam and Emily Pote  
Richard and Susan Slaymaker  
Michael Smith  
Rebecca Thompson

Christian and Alla Vance  
Judy and John Waskom  
Sandra and Charles S. West  
Ashley and Mark Willson  
Betty Wong

**Angel (\$300-\$499)**

Chuck Addington  
John and Betty Allin  
Sarah Jane Alston  
Richard and Martha Blount  
Catherine Boone  
Mimi Bradley  
Jayne Britt  
Margaret and Carter Brown  
Steve Butler  
John Chapman  
Dr. Suman and Roslyn Das  
Mike and Kathleen Duke  
Dr. Katy Farrell  
Betsy and Henry Folmar  
Jay and Mary Fontaine  
John and Marianne Gaudin  
Lester and Ellen Hailey  
John and Diana Howell  
Dr. Mary Jane Magruder and  
Jeffrey Levin  
Jim and Martha Lightsey  
Virgi and Chuck Lindsay  
Darri and Keith Mansel  
Jim and Sharon Miller  
Richard and Sylvia Mills  
Joe Morris  
Beth and Steve Orlansky  
Bill and Susan Osborne  
Kim and Trey Porter  
Naomi and Bob Ridgway  
Holly Wagner  
Ree Walden and Mike Bishop  
Carla and Randall Wall  
Mary Alice and Donny White

Debbie Wolfram  
Linda Young

**Patron (\$100-\$299)**

Jerry P. Agent  
Peri Akin  
Ivy and Frank Alley  
Katherine Anderson  
Ann Anderson  
Jim and Susie Angelo  
Phil and Kathryn Ayers  
Melissa and Ron Applewhite  
Carshena Bailey  
Julia C. Baker  
Ray and Cindy Balentine  
Jim Barfield  
Bill and Judy Barnett  
Carolyn Bigelow and John  
Zehr  
Jean and Glen Bush  
Leigh and George Butler  
Thorne and Kelly Butler  
Ramon and Mary K. Callahan  
Raj Cherukuri  
Katherine Chesteen  
Bob and Jeannie Chunn  
Roger Clifford Clapp  
Jan Collins  
Gary and Becky Conley  
Charles Copeland  
Tom and Sandi Corlett  
Kitty Cottingham  
Benita Cribb  
Margaret Cupples  
Nancy F. Curtis  
Melissa and Ralph Daniel  
Jerrelyn Dennis  
C.T. and Anna Dexter  
Brenda Dominick  
Emily and Jimmy Dossett  
Kelley Walton Fenelon

Judy Ferguson  
Wayne Ferrell  
Sue Simmons Freeman  
Kathleen Gafford  
Libby Garland  
Danny Carroll and Robert  
Gatewood  
Andy and Alice Geoghegan  
Karen Gilder  
Christine and Bobby Gill  
Jackie and Carter Haines  
Dianne Harms  
Roger and Peggy Hastings  
Gail Helms  
Lane Greenlee and Rebecca  
Hodges  
Mrs. Taylor Holland  
Ellen Hontzas  
Carolyn Hughes  
Paula James  
Jacque Keltner  
Cathy and Stanley King  
Ted King  
Connie Kossen  
Jon and Lisa Krassny  
Skip Kuzel  
Jan and Doug Lemon  
Harvey and Sandy Little  
T. Longmire  
B. Anne Lovelady  
Grace Marsh  
Natalie Maynor  
Chuck McIntosh  
Debra Monroe-Musgrave  
Ronnie Musgrove  
Mary Clay Morgan  
Brittany Mounts  
Susan and W. Hibbett Neel  
Jim and Jenny Neeld  
Fran Noone  
Jeanne and Eric Olson

Kathy and Walter Palmer  
JoJo and Susan Payne  
Dierdre Payne  
Marion Peaks  
Clif and Kim Peyton  
Steve Price and Deirdre  
Danahar  
George and Jann Puckett  
Steve Rachel  
Karen Redhead  
Frank and Rebecca Rives  
Brenda Roberts  
Franceska Loeb Roland  
Jeanne and Steve Rozman  
Cheryl and Richard Rula  
Stephen Schutze  
Susan Shands-Jones  
Paul Sheffield  
Kathy Sones  
Maureen and Clyde Staley  
Ruth and Forrest Stringfellow  
John F. Sullivan, Jr.  
Anthony and Sheryl Thomas  
Terry Thomas  
Linda Thompson Robertson  
Susanne Tomlinson  
Marjorie Underwood  
Ed Van Cleef  
Jimmy and Becky Vickery  
Ravenna and Stan Wagon  
Carol Walker  
Cecile Walsh Wardlaw  
Anne L. Webster  
Bruce Welch  
Jo Ann S. Welch  
Gigi and Vic Welsh  
Ashley Wicks  
Libba Wilkes  
Terry Winstead  
David and Michelle Williams

Collins Wohner  
Pat McAllister and Jane  
Woosley

### **Contributors (\$50-\$99)**

Bob and Penny Ammons  
Brad Ford  
Justis Gibbs  
Maggie Herndon  
Jimmy and Renee Jones  
Joseph Kopacz  
Shae and Jim Lowery  
Sandra Polanski  
Paul Rankin

### **In Honor of Dawn Buck:**

Melissa and Ron Applewhite  
Barbara Austin  
Patti Carr Black  
Mary Helen and Bo Bowen  
Ben Buck  
Blake Buck  
Jo Ann Robinson and Bill Ford  
Campbell  
Joyce Franklin  
John and Diana Howell  
Lauren and Robert Kalka  
Harvey and Mary Kay Kimble  
Virgi and Chuck Lindsay  
Sammy Moon  
Joe Morris  
Luther and Ginnie Munford  
Thomas and Lydia Parker  
Francine Reynolds  
Jerry Sandlin  
Linda and John Schmidt  
JeriAnna Shaw and Gray  
Welch  
Betty and Lee Smithson  
Pam Steadman  
Jimmye and Andy Sweat

Carol Taff  
Rosie Tominello  
Holly Wagner  
Carla and Randall Wall  
Cecile Wardlaw

### **In Honor of Barbara Austin:**

David and Katie Blount  
Dawn and David Buck  
Alfreda Spell  
Helen and Jim Turner

### **In Memory of Foye Bycofski:**

Al and Billie Green  
Susan and Macy Hart  
Bill McCarty  
Mary and Chico Taylor

### **In Memory of C.B. Carroll:**

Barbara Austin

### **In Memory of Lester Senter Wilson:**

Barbara Austin  
Dawn and David Buck

### **In Memory of Shirley Simpson:**

Barbara Austin  
Dawn and David Buck  
Francine Reynolds

### **In Memory of David E. Dyess: The Play Readers of Jackson**

### **In Memory of Iva O'Quinn Stewart:**

Barbara Austin  
Bill McCarty

**In Memory of Andy Reynolds:**

Susan and Macy Hart

**In Memory of Dr. Dewey Myers:**

Bill McCarty

Joe Morris

**In Memory of Mimi Bradley:**

Amy Bush

Debbie Carrington

Gretchen Gulmon

David and Beth Heins

Ann Hendrick

Bill McCarty

Jeanne Marie Peet

Paula Pratt

St. Andrew's Episcopal School

Kimberly Van Uden

**In Memory of Larry Wells:**

Barbara Austin

Dawn and David Buck

Betty and Dudley Marble

Bill McCarty

Oliver Nash

Francine and Chuck Reynolds

Jo Ann Robinson and Bill Ford Campbell

Holly Wagner

**In Memory of Pat Krakos:**

Kathleen Ambre

Barbara Austin

Dawn and David Buck

Stacey and Earnest Gaines

Polly Hammett

Susan and Macy Hart

Joshua Krakos

Bill McCarty

Margaret and Brad Pigott

Francine and Chuck Reynolds

Sandra and Charles West

Julia Young

**In Memory of Alison "Tippy" Lyell:**

The Play Readers of Jackson

**In Memory of Michael McNally:**

Ann McNally

**In Memory of Jack McDaniel:**

Dawn and David Buck

Karen Redhead

Francine Reynolds

Judy Bernal Varner and Charles Varner

**In Memory of Fred Mann:**

Judy Bernal Varner and Charles Varner

## HOW CAN YOU HELP?

Without the support of people like you, there simply would not be a new stage theatre. We welcome your help. Whether it is in the form of a tax-deductible contribution or a product or service, every gift is deeply appreciated and recognized.

If you would like to contribute, contact New Stage Theatre, P.O. Box 4792, Jackson, MS 39296-4792, (601) 948-3533.

## SPONSORS

Our Season sponsors provide funding that makes it possible for us to achieve artistic excellence. We salute our 2024-25 season sponsors, and we encourage you to patronize these businesses.



**SAM E. AND BURNICE C.  
WITTEL FOUNDATION**

**LINDA AND JOHN  
SCHMIDT**

**THE DORSEY J. BAREFIELD  
CHARITABLE TRUST**



New Stage programming is made possible with the support of:



**THE BILL McCARTY III  
FOUNDATION**



**THE CHISHOLM FOUNDATION**



**ROBERT GIBBS  
JUSTIS GIBBS**



THE JANE REID PETTY THEATRE CENTER

1100 Carlisle • Jackson, Mississippi 39202

### BOX OFFICE HOURS

Monday-Friday: 10:00 a.m. – 5:00 p.m.

*During performances, will remain  
open until 7:00 AND box office hours on  
Saturdays to be open until 7:00*

Saturday: 4:00 p.m. – 7:00 p.m.

Sunday: 1:00 p.m. – 3:00 p.m.

*Saturday and Sunday hours only apply  
during the run of a show.*

### TELEPHONE/WEBSITE

Main Number: (601) 948-3533

Box Office: ext. 223

Artistic Director: ext. 224

Managing Director: ext. 246

Marketing Director: ext. 225

Education Director: ext. 232

Website: [www.newstagetheatre.com](http://www.newstagetheatre.com)

Email: [mail@newstagetheatre.com](mailto:mail@newstagetheatre.com)

New Stage Theatre is a Constituent of Theatre Communication Group (TCG),  
the national organization for the American theatre.