



Noises Off

By **Michael Frayn**

Directed by
**Francine Thomas
Reynolds**

Sept. 10-22, 2024

NEW STAGE
Theatre



**THE COMEDY
WHERE
EVERYONE
GETS CAUGHT
IN THE ACT!**



Sponsored by

**LINDA AND JOHN
SCHMIDT**

Costume Designer
Anna Christine Hillberg

Lighting Designer
Andrew Prince

Technical Director/
Co-Scenic Designer
Richard Lawrence

Production Stage Manager
Mattea Pierce

Properties Designer
Jenna Kahley

Co-Scenic Designer
Brent Lefavor

Sound Designer/Audio Engineer
Alberto Meza

Stunt Director
David Reed

Production Manager
Casey Nelms

Noises Off

By Michael Frayn

Noises Off

Noises Off is presented by arrangement with Concord Theatricals on behalf of Samuel French, Inc. www.concordtheatricals.com

**Any video and/or audio recording of this production is strictly prohibited.
Recommended for ages 17+ for adult language and themes.**

There will be one 15-minute intermission.

SETTING

Early 1980s

ACT ONE

The living room of the Brents' country home. Wednesday afternoon.
(*Grand Theatre, Weston-super-Mare, Monday, January 14th*)

(INTERMISSION)

ACT TWO

The living room of the Brents' country home. Wednesday afternoon.
(*Theatre Royal, Aston-under-Lyne, Wednesday matinee, February 13th*)

ACT THREE

The living room of the Brents' country home. Wednesday afternoon.
(*Municipal Theatre, Stockon-on-Tees, Saturday, April 6th*)

THE CAST

Dotty Otley	Jo Ann Robinson*
Lloyd Dallas	Joseph Frost
Gary Lejeune.....	Drew Stark
Brooke Ashton	Cameron Vipperman†
Poppy Norton-Taylor.....	Jamie Shannon Ferguson
Frederick Fellowes.....	John Howell
Belinda Blair.....	Jessica Wilkinson
Tim Allgood	Keith Allen Davis, Jr.†
Selsdon Mowbray	John Jabaley

UNDERSTUDIES

Understudies never substitute for listed performers unless a specific announcement is made at the time of the performance. For Dotty Otley: Tatiana Grace†; For Lloyd Dallas and Frederick Fellowes: Eric Eaton; For Gary Lejeune/Selsdon Mowbray: Jacob Heuer†; For Brooke Ashton: Marquita K. Levy; For Poppy Norton-Taylor: Galia Mixon; For Belinda Blair: Tivona Thomas; For Tim Allgood: Aiden Flowers

*Indicates member of the Actors' Equity Association

†Indicates Associate Artist

DIRECTOR'S WELCOME LETTER

New Stage Theatre 2024-2025 Season 59, Your Place for Broadway Shows!

Welcome to New Stage Theatre! For almost six decades, Mississippians seeking the best in live, professional theatre have turned to one place – *New Stage Theatre, Your Place for Broadway Shows*. We are celebrating our 59th Season with captivating stories that first enjoyed success on the Broadway stage.

Thank you for coming to this performance. We invite you to relax and immerse yourself in this show and others throughout our 2024-25 Season. It is our hope to bring uproarious laughter to the theatre with the deliriously funny farce *Noises Off* by Michael Frayn. We are delighted to announce that New Stage is one of the first regional theatres to present a new adaptation of *Patrick Hamilton's Gaslight* by Steven Dietz. A masterpiece of intrigue and suspense, *Gaslight* is a portrait of courage in the face of evil.

In the New Year, the season continues with a powerful and provocative contemporary drama *The Mountaintop* by Memphian Katori Hall. This award-winning play is a riveting, poetic journey through Martin Luther King, Jr.'s missing minutes on April 3, 1968. It promises to be a performance that pulses with a new sense of urgency. It is followed by the memorable *Little Women, The Broadway Musical*. With book by Allan Knee, music by Jason Howland and lyrics by Mindi Dickstein, this beloved musical is a timeless captivating story filled with personal discovery, history, heartache, hope and everlasting love.

We are thrilled to announce our season finale is the Broadway hit *Come From Away* by Irene Sankoff and David Hein. New Stage is proud to be among the first regional theatres to present this ground breaking musical after the sensational success of its Broadway run and national tour. Based on the remarkable true story of events occurring after 9/11, *Come from Away* offers a universal message of kindness.

Million Dollar Quartet Christmas brings Rockin' Holiday joy as an extra winter treat. Season subscribers can receive over 20% off the regular ticket price of this high-quality musical entertainment.

New Stage Theatre's educational programs will continue to reach Mississippi students. We will perform our three touring shows, *A Year with Frog and Toad*, *We Shall Not Be Moved*, a Mississippi History play with music; and *Macbeth* to more than 13,000 students across the state during the school year. I urge you to go to our website www.newstagetheatre.com and sign up to receive email news about all of our exciting artistic and educational programming.

New Stage is committed to providing playgoers with a first-class, theatrical experience at truly affordable prices. Each season, New Stage Theatre entertains an audience of more than 24,000 in Jackson. Thousands of those tickets are discounted tickets sold or provided for students attending school day matinees of our mainstage shows. Because ticket sales actually account for only half of what it costs to bring our plays to life on the stage and our programs to the community, I hope that you will consider a tax-deductible gift to New Stage. Donor support makes our work on the stage and incredible outreach activity possible.

Whether you are new to our audience or a long-time patron, we are glad you are here to experience New Stage Theatre *Season 59, Your Place for Broadway Shows!* Enjoy the show!

Francine Thomas Reynolds
Artistic Director

HISTORY OF THE PLAY

“FARCE SEEMS TO GATHER FARCE AROUND IT”

- Michael Frayn charts the progress of *Noises Off* from its inception in 1977.



“After the play had opened at the Lyric Hammersmith in 1982, I did a great deal more rewriting, and went on rewriting until Nicky Henson, who was playing Garry, announced on behalf of the cast (rather as Garry himself might have done) that they would learn no further versions.

The play transferred to the Savoy Theatre and ran until 1987 with five successive casts. For two of the cast-changes I did more rewrites. I also rewrote for the Washington production in 1983, and I rewrote again when this moved to Broadway. When the play was revived at the National Theatre in 2000 I rewrote yet again. Some of the changes were ones that I’d been

longing to make myself—there’s nothing like having to sit through a play over and over again to make your finger itch for the delete key—while many more changes were suggested by my new director, Jeremy Sams.

What vicissitudes it has been through in other languages I can mostly only guess. In France it has been played under two different titles (sometimes simultaneously in different parts of the country), and in Germany under four. I imagine that it’s often been freely adapted to local circumstances, in spite of the prohibitions in the contract. In France, certainly, my British actors and the characters they are playing turned into Frenchmen, in Italy into Italians (who introduced a ‘Sardine Song’ between the acts). In Prague they performed the play for some ten years without Act Three, and no one noticed until I arrived.

Farce seems to gather farce around it. One Christmas in Sicily two different touring productions, one lawfully contracted, one not, like husband and lover in a farce, turned up in Catania at the same time to their mutual surprise; lawsuits followed. In 2000, re-reading the English text that had been in use for the previous 15 years, I discovered a number of bizarre misprints, and I suspect that directors around the world had been driven to some quite outlandish devices to make sense of them. Now the present director, Lindsay Posner, with even more scrupulous scholarship, has discovered a few more, and I don’t like to think how many Roger Tramplemains in the past 11 years have been exiting into the bedroom cupboard and emerging dutifully but inexplicably two lines later from the linen cupboard.”

Source: Frayn, Michael. “Noises Off: A Brief History.” *Noises Off*. 1st ed. Bloomsbury Publishing, 2000. Print. *Modern Plays*.

THE CAST



KEITH ALLEN DAVIS, JR.[†] (Tim Allgood) is an actor, writer, musician, and director from Meridian, Miss. He recently received his Bachelor of Arts in theatre arts at Alabama State University. During his time at ASU, he has been cast in and worked on productions such as *Dreamgirls*, *The Wiz*, *Tracks*, *Slammin II*, and *Blues for An Alabama Sky*. He has also written for and co-directed Montgomery, Alabama's performance for the worldwide festival of *The Walk* (Little Amal) in 2023. He hopes to continue to use all the tools he has acquired from

Alabama State to propel him successfully into his professional career.



ERIC EATON (Lloyd Dallas U.S./Frederick Fellowes U.S.) is thrilled to be back at New Stage this season and working again with old friends. Eaton is a SAG-AFTRA-eligible voice actor, banker, and teacher. He has appeared in *One Man, Two Guvnors*, *A Christmas Carol*, and several Toast to Broadway Benefits for New Stage. He has also appeared in plays and musicals over the years since high school and has countless voice-acting credits for radio and television. Eaton is a member of The Chapel of the Cross Episcopal Church and is very proud of

his two sons, Banks and Hayes, who are both involved in their school's theatre program. Many thanks to Francine and Vern for this opportunity to work with this outstanding company. Much love to his family and friends for the constant support.



JAMIE SHANNON FERGUSON (Poppy Norton-Taylor/Dialect Coach) is thankful to return to New Stage and work with this incredible team. She teaches voice and directs the musicals at Mississippi College. Past credits include: Martha in *The Secret Garden*, Donna in *Mamma Mia*, Diana in *Next to Normal*. She holds degrees in music and theatre from Mississippi College and The Boston Conservatory. jamieshannonferguson.com @beltertrash



AIDEN FLOWERS (Tim Allgood U.S.) is excited to return to New Stage as a member of the immensely talented company of *Noises Off*. Acting professionally since 2014, his favorite roles include Young Klaus on the CW's *The Originals*, Joe Keller in Brandon High School's Production of *All My Sons*, and Buddy in New Stage Theatre's production of *A Christmas Memory*. Flowers would like to thank his family for their support.

actor chat

Stay and meet the cast after *Noises Off* following the show on Wednesday, September 11 and Thursday, September 19, after the evening performances. Audience members may ask questions of the actors, director and designers in an informal setting.



JOSEPH FROST (Lloyd Dallas) lives in Jackson, with his wife Shannon, and their children Nina, Darby, Emory, Beau, and Violet. He has previously appeared in more than 20 New Stage Theatre productions including *Little Shop of Horrors*, *Million Dollar Quartet*, *One Man Two Guvnors*, *Peter Pan*, *Tuesdays with Morrie*, *Hell in High Water*, and *A Christmas Carol*, as well as the UnFramed productions of *Dead Man's Cell Phone*, *Betrayal*, and *White Rabbit Red Rabbit*. As a writer, Frost's plays have been staged around the country, including the premieres in Jackson of the comedies *The Mayfair Affair* and *Mayfair Ma Chère*, as well as *Big Mama's Kitchen*, which was commissioned by Hearth and Mantel Theatre and received a virtual reading with New Stage in the fall of 2020. Frost is currently a theatre teacher at Wells APAC, and is the artistic director of the **floodlight theatre company**.



TATIANA GRACE[†] (Dotty Otley U.S.) is thrilled to be a part of the team at New Stage Theatre! Originating from Georgia, she received her Bachelor of Fine Arts in theatre performance at Columbus State University in Columbus, GA. Her favorite past productions include *Stupid F**king Bird* (Mash), *Three Little Birds* (Cedella), *Into the Woods* (Jack's Mother), and *Lady Day at Emerson's Bar & Grill* (Billie Holiday). She would like to thank her friends, family, and professors who have helped and supported her along the way.

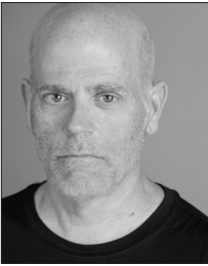


JACOB HEUER[†] (Gary Lajeune U.S./Seldon Mowbray U.S.) graduated from the University of Mississippi with a BFA in acting for the stage and screen. In college, he starred in several UM Theatre productions, including performing as Mr. Mushnik in *Little Shop of Horrors*, The Baker in *Into the Woods*, G/Zeus in *Polaroid Stories*, Mr. Callahan in *Legally Blonde*, Robert in *Boeing Boeing*, and Mr. Laurence in *Little Women the Musical*. In the summer seasons of 2023 and 2024, he performed professionally as Ali Hakim in *Oklahoma!* and as Oliver Hix in *The Music Man* at the Gertrude C. Ford Center for the Performing Arts. Jacob has spent the last year working as an acting intern at the Florida Repertory Theatre in Fort Myers, Florida, and is looking forward to working with a new group of artists at New Stage Theatre.



JOHN HOWELL (Frederick Fellowes) is performing in *Noises Off* for the second time at New Stage (he played Tim 19 years ago). More recently he played Mike in *What the Constitution Means to Me* and Mr. Green in *Clue*. Other New Stage credits include *The Curious Incident of the Dog in Night-Time*, *Shakespeare in Love*, *And Then There Were None*, *All the Way*, *Sherlock Holmes and the Adventure of the Suicide Club*, *Sherlock Homes: The Final Adventure*, *Mrs. Mannerly*, and *Twelfth Night*. He and his wife Diana are co-founders of Fondren

Theatre Workshop, where his credits include *Through the Looking-Glass*, *The Lion in Winter*, *The Monster Monologues*, and *The Winter Tale*. Other favorite roles: George in *Who's Afraid of Virginia Woolf?* And Elwood in *Harvey*. Howell was the arts coordinator and drama teacher at Casey Elementary for 25 years.



JOHN JABALEY (Selsdon Mowbray) grew up in Jackson and earned a B.A. at Millsaps and an MFA at CalArts. He lives in New Orleans, where he played Otto Frank in *The Diary of Anne Frank* at the National WWII Museum. Previously at New Stage as Apple in *The Exact Center of the Universe*. In L.A. he appeared at the Theatricum Botanicum, Shakespeare Festival/L.A. and many others, and was a member of Theatre Banshee. Film/TV credits include *Into the Wild*, *Firefly*, *Buffy the Vampire Slayer*, *Preacher*, *NCIS:New Orleans*, and recurring

roles on *Blackbird*, *Treme* and *Queen Sugar*. Much love to his wife, Erika.



MARQUITA K. LEVY (Brooke Ashton U.S.) is excited to be returning to New Stage Theatre! She is a graduate of THEE Jackson State University, where she received her B.S. in mass communications. Levy last appeared at New Stage as Simone in *Chicken and Biscuits*. Additional New Stage credits include *Lend Me a Soprano*, *Clue*, *The Curious Incident of the Dog in the Night-time*, and several Unframed Productions. Levy would like to thank her family and friends for their continuous love & support.

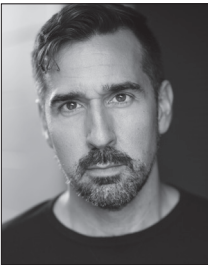


GALIA MIXON (Poppy Norton-Taylor U.S.) is a native of Hattiesburg, Mississippi. She was last seen as Mayella Ewell in Sumrall Little Theatre's *To Kill A Mockingbird*, of which she is also the newest member of their board. She accredits her training to the conservatory of Annie Moses. Forever grateful to the cast, crew & creative team. @galiabackstage



JO ANN ROBINSON* (Dotty Otley) has worked professionally for more than 40 years in television, film, and regional theatres across the U.S. From 1978-1989, she was based out of Los Angeles where credits included co-starring roles in *The New Love American Style* and the nationally syndicated *Comedy of Comedies*. She appeared as a stand-up comedienne at Hollywood's Laugh Factory and The Ice House. She was also a founding member of the comedy group Half-A-Deck, named as 'Best Bet' by the *LA Times*. Robinson has been a regular at New

Stage since 1990. Some New Stage credits include *Who's Afraid of Virginia Woolf?*, *The Grapes of Wrath*, *Lombardi*, *Idols of the King*, *Grace & Glorie*, and *Misery*. Some regional theatre credits include *Angels in America I and II*, *Lips Together*, *Teeth Apart*, and *A Streetcar Named Desire*, which earned her a Best Actress nomination by the Austin, TX. Critic's Circle. Robinson can currently be seen on Netflix in feature films *We Have a Ghost* and *Hitman* which was directed by Oscar nominee Richard Linklater. Her most current film, *Down to the Felt*, is in post-production. She plays a leading role opposite Michael Stahl-David.



DREW STARK (Gary Lajuene) is thrilled to return to New Stage after receiving his MFA in theatre at the University of Central Florida. A Mississippi native, he holds a B.A. from the College of William and Mary. Previous New Stage performance credits include: *Beautiful: The Carole King Musical* (Don Kirschner), *The Secret Garden*, *Elf*, *Bright Star* (Daryl Ames), *Sweet Potato Queens* (George), *Murder in the Orient Express* (Michel), *The Diary of Anne Frank* (Mr. van Daan), *Shakespeare in Love* (Marlowe), and *33 Variations* (Mike). Regional credits

include: *CATS*, *Legally Blonde*, *Joseph*, *42nd Street*, *Seven Brides for Seven Brothers* (Prather Productions), *Young Frankenstein*, *Damn Yankees*, *Annie* (Little Theatre on the Square), *Kinky Boots*, *Henry V*, *Henry VI, Part One: Joan of Arc*, *Christmas Carol*, *Charlotte's Web*, and the world premiere of *A Big Day for Baseball: A Magic Treehouse Adventure* (Orlando Shakes). Drew is a theatre educator and professional fight director/choreographer. Instagram: @drewstarkactor Website: drewstarkactor.com.



TIVONA THOMAS (Belinda Blair U.S.) is a Clinton, Miss. native. She graduated from Birmingham-Southern College in 2023 with a B.A. in theatre and film production. She is thrilled to make her New Stage debut and work with an incredible team! Some of her favorite roles include Queen Gynecia in *Head Over Heels*, Margery Pinchwife in *The Country Wife*, and Annie Canon in *Silent Sky*. Thomas hopes to continue in the realm of stage and screen for years to come.



CAMERON VIPPERMAN[†] (Poppy Norton-Taylor) is excited to continue her journey of lifelong learning, creativity, and empathy-building with New Stage Theatre. Originally from Columbia, S.C., she is a graduate of Winthrop University's honors program with a Bachelor of Arts in theatre, concentrating in musical theatre and minoring in education. Some of her favorite performances include *Pippin* (Catherine), *The Wizard of Oz* (Dorothy), *Sweeney Todd* (Johanna), and *Romeo and Juliet* (Montague). She has performed professionally as a

Resident Chorus Member in three seasons with Opera Carolina. Some of her long-time passions are choral music, piano, musical theatre, history, songwriting, playwriting, summer camp, reading, and drinking coffee on porches. Some of her newer interests are Shakespeare, theatre for youth, vocal pedagogy, and weightlifting. She is so grateful to get to do what she loves as a profession. Micah 6:8



JESSICA WILKINSON (Belinda Blair) is a SAG-AFTRA actor from the Jackson area who has worked at New Stage Theatre for over 23 years. Favorite credits include Mother Superior in *Sister Act*, Truvy in *Steel Magnolias*, Annie Sullivan in *The Miracle Worker*, and Percy in *The Spitfire Grill*. Other favorite shows include *Best of Enemies*, *The Miss Firecracker Contest*, *Hairspray*, *The Foreigner*, *Boeing Boeing*, and *To Kill a Mockingbird*. Select feature film credits include *The Livingston Gardener*, *As I Lay Dying*, *Starve* (Syfy), *Lies My Sister Told Me* (Lifetime), *Every Time a Bell Rings* (Hallmark) and *I Killed My BFF* (Lifetime),

working with actors such as James Franco, James Kyson, Tim Blake Nelson, James Caan, and David Spade. She will soon appear in a Netflix series called *The Corps*, starring Vera Farmiga. Wilkinson has a master's in English and has taught various classes at the secondary and college levels for 13 years— choir, public speaking, theatre, and English. She now teaches English at Jackson Preparatory School and works for WLBT on *Studio 3*, a daily lifestyle show that airs live each weekday at 3:00 PM. She's mom to Belle Grace, Noble, and schnorkie Boo Radley, and she's wife to Lenny, a colonel in the MS Air National Guard.

PRODUCTION TEAM

FRANCINE THOMAS REYNOLDS (Artistic Director/Director) has been the artistic director at New Stage since 2006 and has worked as a theatre artist for 37 years. She recently directed *Beautiful*, *The Carole King Musical*, *The Secret Garden*, *Every Brilliant Thing*, *The Sound of Music*, *The Curious Incident of the Dog in the Night Time*, *I Just Stopped By to See the Man*, *The Debate for Democracy*, *Pipeline*, *Bright Star*, *Hell in High Water*, *Sweat*, *Shakespeare in Love*, *Silent Sky*, and *Best of Enemies*. Favorite acting roles include Dr. Katherine Brandt in *33 Variations*, Polly in *Other Desert Cities*,

Lucille in *Dividing the Estate*, and Edna Earle in Eudora Welty's *The Ponder Heart*. She has directed a variety of shows including *All The Way*, *The Whipping Man*, *The Grapes of Wrath*, *Our Town*, *Red*, *Who's Afraid of Virginia Woolf?*, *Hairspray*, *Mahalia: A Gospel Musical*, *The Great Gatsby*, *Lombardi*, *Boeing, Boeing*, *A Christmas Carol*, *Gee's Bend*, *A Raisin in the Sun*, *Annie*, *A Soldier's Play*, and *I Love You, You're Perfect, Now Change*. Reynolds is a 2022 recipient of a Directing Fellowship from the Mississippi Arts Commission. She served three terms on the board of directors for the Theatre Communications Group (TCG) and several terms on the Mississippi Theatre Association Board of Directors. Reynolds has served on grant panels for the National Endowment of the Arts and the Mississippi Arts Commission and has enjoyed adjudicating for Poetry Out Loud and the Southeastern Theatre Conference. She was a speaker for the 2021 Story State, www.storystate.msstate.edu, produced by Mississippi State University. Originally, from the Upper Peninsula of Michigan, Reynolds enjoys living in Jackson with her husband, Chuck.

DAVID REED (Stunt Director) is a director, educator, and stage movement professional currently serving as an Assistant Professor at the University of Arkansas. He has directed, choreographed, and trained professional and collegiate actors across the country, most recently working with Theatre Squared, Orlando Shakespeare Theatre, Orlando Rep, Theatre West End, Liberty Mountain, and the Southern Appalachian Historical Association. David is an Associate member of Stage Directors and Choreographers, a Certified Teacher and Fight Director with the Society of American Fight Directors and a Certified Intimacy Director with Intimacy Directors and Coordinators.

BRENT LEFAVOR (Co-Set Designer) M.A., MFA, a professional director, and designer since 1976. He designed lights at Robert Redford's Sundance Theatre for 10 years; was a founding member, director, and designer for Walk-On's Inc. in Salt Lake City; and directed and designed at Grand Teton Mainstage theatre in Jackson Hole, Wyo. Lefavor moved to Mississippi in 1983 where he taught theater for 25 years at Millsaps College. During that time he designed sets and lights for more than 100 shows. Lefavor began as a guest artist at New Stage Theatre in 1998 with the lighting for *A Funny Thing Happened on the Way to the Forum*; he became a full-time staff member in 2009, where he continued for nine seasons. At New Stage he designed lights and sets, some favorites include: *33 Variations*, *Christmas Carol* (2013), *All My Sons*, *The Miracle Worker*, *Cat on a Hot Tin Roof*, *Smokey Joe's Café*, *Noises Off*, and *You're a Good Man Charlie Brown*. At New Stage he directed *Sherlock Holmes and the Adventure of the Suicide Club* and *Peter Pan*. My thanks to Francine and the staff for pulling me out of retirement.

RICHARD LAWRENCE (Co-Scenic Designer/Technical Director) serves as the parliamentarian of Fondren Theatre Workshop and has appeared in *A Christmas Memory* at New Stage, FTW's *The Rocky Horror Show*, *Buck Nekkid for Jesus*, directed FTW's *Every Christmas Story Ever Told*, and most recently appeared as Trekkie Monster in *Avenue Q*. He was also the director of the widely successful productions of *Cabaret* and *Company*, which were joint productions of FTW and Actor's Playhouse of Pearl, with

support from New Stage. Lawrence has been seen in New Stage productions of *The Trip to Bountiful* and UnFramed's *The Eight: Reindeer Monologues*, *How I Learned to Drive*, *The Weir*, *Circle Mirror Transformation*, and *Dublin Carol*. Lawrence has won three Best Set awards at Mississippi Theatre Association conferences, and has also won Best Set at Southeastern Theatre Conference.

MATTEA PIERCE (Production Stage Manager) is a graduate of Belhaven University with degrees in both theatre and graphic design. Past New Stage credits for Stage Management include: *Beautiful: The Carole King Musical*, *Lend Me a Soprano*, *What the Constitution Means to Me*, *Elf The Musical*, *The Secret Garden*, *Chicken & Biscuits*, and *Ring of Fire* (ASM). She is excited to be a part of New Stage's 59th Season – Your Place for Broadway Shows.

CASEY NELMS (Production Manager) is a proud Mississippian born and raised in Pearl, Miss. She received her Bachelor of social work from Belhaven University followed by her master's of social work from the University of Southern California. While living in Los Angeles, she transitioned from a robust therapy career to producing and supervising productions in the film industry. Nelms has been fortunate enough to work with companies such as Lionsgate, Patriot Pictures, and Convoke Media, as well as many others, and now happily serves as production manager at New Stage Theatre. She lives on the Ross Barnett Reservoir with her husband and their two droopy-faced beagles, Olive and Mabel.

ANDREW PRINCE (Lighting Designer) is the technical director at Jackson Academy Performing Arts Center. He also has a freelance production business and has designed lighting for theatre, musical artists, corporate clients, schools and churches. Prince served eight years in the United States Navy as a nuclear-trained submarine electrician, with additional studies in computer and network engineering. His theatre credits include lighting shows such as *Beauty and the Beast*, *The Little Mermaid*, *Into the Woods*, *Shrek the Musical*, *Newsies*, *Bright Star*, and *Mamma Mia*. Prince is once again honored to be working with the outstanding staff and cast at New Stage Theatre and would like to thank his wife Mary and twin boys Lucas and Owen for their love and support.

ANNA CHRISTINE HILLBERY (Costume Designer) is honored to work with the New Stage Theatre team. Anna is joining us from Vero Beach Florida where she has been the costume shop manager for Riverside Theatre for the past eight years. Anna has worked on over 150 shows since her career started in 2006 and has designed over 30 main stage and education shows for Riverside Theatre since 2015. Recent costume design credits for Riverside Theatre include: *Million Dollar Quartet*, *Yankee Tavern*, *Morning After Grace*, *Butterflies Are Free*, and *Lombardi*. Hillbery would like to thank her family who lives in Mississippi for all of their love, support and encouragement. A special thanks to her sister Malaika Quarterman for always inspiring her through all her work, passion and love for the arts.

NINA FROST (Costume Shop Supervisor) is from Jackson and is a recent graduate of Belhaven University with a B.A. in theatre. She has constructed many costumes over the past three years, but her favorite was Dorothy's blue dress in *The Wizard of Oz* at Belhaven. Recently, she spent her summer at the New London Barn Playhouse in New

London, N.H. as a stitcher and wardrobe crew. Frost's most recent credit was co-costume designer of *Beautiful: The Carole King Musical*. Frost is excited to be at New Stage Theatre this season!

VERN ALLEN (Assistant Director/Stunt Coordinator) is a New York-based producer, director, writer, and stage manager originally born in Mississippi. He's directed and managed two touring shows, Theatre for Young Audiences, community theatre, and collegiate plays, the most recent being *All American Boys* by Jody Alperin and Vicky Crouch. He also served as second AD for Wes Miller's *A Day to Die* starring Bruce Willis and Dallas Jackson's *The System* starring Tyrese Gibson. Allen is an alumnus of Mississippi State University and the Mississippi School of the Arts, and remains a student of the game.

ALBERTO MEZA (Resident Sound and Projections Designer, Covid Safety Manager, Company Liaison) is a graduate of Belhaven University with a BFA in theatre. He is from Brandon, Miss., and is grateful to work in the only regional theatre near his hometown. He began working with New Stage Theatre in 2020 and has continued to work in multiple positions over the recent years. Some of his regional design credits for both Sound and Projections include *Pipeline*, *Little Shop of Horrors*, *A Christmas Carol*, *A Curious Incident of the Dog in the Nighttime*, *9 to 5*, *Clue*, *The Sound of Music*, *Every Brilliant Thing*, *Ring of Fire*, *Elf The Musical*, and *Chicken and Biscuits*. He worked with Belhaven University Theatre as their professional guest artist as the Sound Engineer/Designer for their main stage productions, *Wizard of Oz*, *The Spitfire Grill*, and *Cinderella*. He also got to light design with Hinds CC on their show *Radium Girls*. Meza was the streamer and editor behind the Thursday Night Virtual Plays, Conversations, & Cocktails that was presented over the virtual season at New Stage Theatre.

JENNA KAHLEY (Properties Designer) is from Rockford, Ill. She has a Bachelor of Arts in theatre and a Bachelor of Fine Arts in creative writing from Belhaven University. She's previously worked for Gateway Playhouse in Bellport, NY.

MATTHEW MCMURTRY (Lead Electrician) is a recent graduate of Belhaven University. His recent work with New Stage includes *Every Brilliant Thing*, *The Glass Menagerie*, *Clue*, and *9 to 5: The Musical*. He served as the lighting designer for New Stage's summer camp productions of *Frog and Toad*, *Kids* and *Children of Eden, Jr.* McMurtry has also served as lighting designer for Belhaven University's productions of *Steel Magnolias* and *The Burial at Thebes*.

ASHLYN PINKERTON[†] (Assistant Stage Manager/Running Crew) is a 2024 graduate from Belhaven University with a B.A. in theatre performance. She was born and raised in Brandon, Mississippi. Her previous performance roles include *A Lovely Sunday for Creve Coeur* (Dorothea) and *Suite Surrender* (Murphy) at Belhaven University. She made her directing debut at Belhaven with her spaghetti western adaptation of *The Marriage Proposal* by Anton Chekhov. Pinkerton is pursuing a career in film acting and directing. She is thrilled to be a part of New Stage's team.

CREW

Lead Electrician	Matthew McMurtry
Assistant Director/Stunt Coordinator	Vern Allen
Assistant Stage Manager/Running Crew	Ashlyn Pinkerton†
Production Associate/Running Crew	Joey Ford
Production Assistant	Darby Frost
Construction	Ness Keogel
Costume Shop Supervisor	Nina Frost
Carpenters	Dave Ellis, Jimmy 'JR' Robertson
Running Crew	Jacob Heuer†, Tatiana Grace†, Cecil Hill
Light board Operator	Casey Nelms
Soundboard Operator	Callie Jackson
Scenic Artist	Michael Montgomery
Dialect Coach	Jamie Shannon Ferguson
Company Liaison	Alberto Meza

† Indicates Associate Artist

THE ADMINISTRATIVE STAFF

DAWN BUCK (Managing Director) has worked on staff at New Stage for more than 20 years. She began her career at New Stage in the fall of 1981 as a box office assistant. Since that time, she has worked as box office manager, audience services director, house manager, bookkeeper, business manager and marketing director. Buck's other professional artistic credits include the USA International Ballet Competition, the Thalia Mara Arts International Foundation – World Performance Series presenting a series of performing artists including American Ballet Theatre, Aquila Theatre of London, Joshua Bell, Alvin Ailey, Cirque Eloize, Wynton Marsalis, and the Lincoln Center Jazz Orchestra. She attended Belhaven University and is an alumnus of Leadership Jackson and a graduate of Dale Carnegie. Buck also completed a residency on theatre management at the Eugene O'Neill Center through a grant from the Foundation for the Extension and Development of Professional American Theatre (FEDAPT). Prior to serving on the staff of the USA International Ballet Competition, she worked with America Reads - Mississippi overseeing and training 270 AmeriCorps members who provided one-on-one tutoring in reading for students in primary K through the 3rd grade across the state. Buck also worked with Imageworks - Films for Business, assisting with the production of commercials, documentaries and training videos. She resides in the Heatherwood neighborhood with her husband David and has two sons who live in the big "N" cities of New York and Nashville.

BILL MCCARTY III (General Manager), a graduate of the University of Mississippi, has extensive background in wholesale and retail sales and real estate property management with the Jitney Jungle supermarket chain. The company was founded by his Grandfather Will McCarty and two Holman cousins in 1919. The families grew the business into a

profitable billion dollar Mississippi-based company led by Bill McCarty Jr, his father, Henry Holman and many talented associates which sold in 1996. During his grocery career, Jack Stevens and Ivan Rider recruited Bill in 1973 to run a follow-spotlight for ***The Gershwin Show*** at the theatre's original Gallatin Street location. He has continued to volunteer with New Stage for more than 51 years in all areas including production, lighting and sound design, back-stage, and for New Stage fundraising events. He is involved in the day-to-day management, maintenance, and production for the theatre and serves on the Board of Trustees as a lifetime member. His favorite design credits are ***A Christmas Carol*** (1984), ***Greater Tuna*** (1986), ***The Gin Game*** (1987), and ***A Streetcar Named Desire*** (1990).

MELISSA TILLMAN (Director of Business Services) is a graduate of Belhaven University where she received a B.A. in technical theatre. She served as the audience services director and marketing director at New Stage, has worked as a box office associate at Lawlor Events Center in Reno, Nevada, and assisted with many box office activities at Belhaven University. Tillman has stage managed many shows in several parts of the country, including Las Vegas and Tennessee. Her stage managing credits include ***Oklahoma!***, ***Meet Me in St. Louis***, ***The Wizard of Oz***, ***Taming of the Shrew***, and ***Love's Labours Lost***; and ***Noye's Fludd*** and ***La Boheme*** with the Mississippi Opera. This is Tillman's ninetieth season with New Stage. She currently resides in Madison with her husband, Kyle, their son, River, and their dog Vash.

XERRON MINGO (Education Director) is a graduate of Florida A&M University. Born and raised in St. Thomas, Virgin Islands. While living in New York City, he worked as a health & safety manager for Apple TV and HGTV productions. He also worked as a testing secretary and production coordinator for television shows with LIONSGATE and AppleMusic Reviews. For the past ten summers, Mingo has worked at Raquette Lake Camps teaching musical theatre to students from all across the world. Mingo could not be more blessed to continue teaching, coaching, and mentoring in his third season as Education Director at New Stage Theatre. During New Stage's 58th season on our mainstage, he directed ***Chicken & Biscuits & Sister Act, Jr.*** Mingo also directed the touring productions of ***Junie B. Jones***, ***The Musical***, ***Anne & Emmett***, & ***Blues for an Alabama Sky*** (Unframed). Mingo played the Macy's Store Manager in ***Elf***, ***The Musical*** and served as the choreographer for the production. He also directed ***Mean Girls, Jr.*** and played the role of Gabriel in ***Fences***. Mingo also played the role of Fezzwig in ***A Christmas Carol*** at New Stage in 2021. He has worked professionally at a plethora of regional theaters in a handful of states. Mingo continues to live in the light and encourages everyone else to do the same.

JERIANNA SHAW (Marketing Director) is a graduate of Mississippi State University where she received a B.A. in communication studies. This is her third season with New Stage Theatre. She currently resides in Jackson with her partner, Gray, their daughter Poppy, and their cats Pepparoni and Salami.

MIA MCELROY (Box Office Manager) is from Jackson, Mississippi. She has a BFA in acting and a certification in film & TV production management. Past experience include

working as the events coordinator for Highball Lanes & Capri Theater and serving as the casting director for a number of indie short films. Although this is her first year working at New Stage as an adult, she has many fond memories of being in different Christmas shows and summer productions as a child. She is elated to be joining the New Stage family once again and is excited for this season!

BETTY WONG (Box Office Assistant/Education Assistant) begins her 18th season at New Stage. She continues to enjoy traveling to schools and towns throughout the state with the Professional Apprentice Company to provide live theatre experiences for students and adults of all ages. When not on the road, you can find her in the box office. She has also served for many years as a volunteer in other areas of the theatre. Her professional work experiences in education and her passion for live theatre have contributed to the growth and expansion of New Stage's Education Department. She has served as a consultant to school districts throughout the state of Mississippi. Wong has a B.S. in educational psychology from Mississippi State University, a M.Ed. from Delta State University, and recently won the 2019 Exemplary Arts Service Award from the Mississippi Alliance for Arts Education.

CARLA MARSH (House Manager) received her B.A. in criminal justice with an emphasis in juvenile justice from Jackson State University. She is pleased to be returning to New Stage for her twenty-first season. Marsh is employed full time with the Hinds County Sheriff's office.

NEW STAGE THEATRE BOARD OF TRUSTEES		
Aaron Hill President	Nora Katz	John Spann
Kim Griffing Porter, Vice President	Laura Miller Marks	Carol Taff
Jennifer Chance, Treasurer	Bill McCarty III*	Christian Vance
Julia Young, Secretary	Sammy Moon	Lydia West
Barbara Austin*	Luther Munford	Advisory Board
Patti Carr Black*	Margaret Pigott	Nicole Bradshaw
James K. Child, Jr.*	Sam Pote	Portia Espy
Christyl Erickson	Malaika Quarterman	Oleta Fitzgerald
Stacy Gaines	Rod Red	Myrna Colley Lee
Justis Gibbs	Julius M. Ridgway, Jr.	Robert Lesley
Susan Hart	Linda Schmidt	*Lifetime Member
	Shirley Simpson*	
	Betty Smithson	

  	<p>Find Newstage on Facebook, Twitter, and Instagram!</p>
---	--

COMING
NEXT

Patrick Hamilton's Gaslight – A New Version for the stage by Steven Dietz

By Steven Dietz

October 22 – November 3, 2024

Regional Premiere

The sanctity of marriage is threatened when sanity is at stake. Strange things start to happen to newlyweds Bella and Jack in this turn-of-the-century Victorian thriller as their seemingly perfect marriage devolves into something more sinister. **Gaslight** thrillingly delves into the horrors of psychological abuse, where the truth is fickle for characters and audiences alike. With undertones of Sherlock Holmes and film noir, it's a story filled with mystery, deceit, and double-crosses.

Recommended for ages 14+.

“A masterpiece of suspense.”
– *New Yorker Magazine* (Praise for Patrick Hamilton's *Gaslight*)

ACKNOWLEDGEMENTS

The staff of New Stage Theatre wishes to thank the following individuals and companies for the generous donation of time and resources to this production and the 58th season.

Jeff Klingfuss

601-957-6797

Margaret Pigott

Mahri McLean

Repeat Street

Amy Smith

Polk Interiors

601-605-9123

Julia Young

2024-2025 SEASON CONTRIBUTORS

It all begins here. The following individuals, corporations and foundations have made generous contributions to New Stage Theatre. Their gifts provide a major portion of the funding necessary to present the productions you enjoy on our stages, the educational programs we offer and help the theatre maintain its standing as one of the nation's best professional regional theatres. Please take a moment to read the list. They deserve your recognition.

Grand Benefactor (\$2500+)

Kathy Davis
Estate of Peggy Jeanes
Frasco Family Foundation
Betty and Lee Smithson
Paul Vanderberry

Benefactor (\$1000-\$2499)

Gayle and Holmes Adams
Paula Graves Ardelean
Dawn and David Buck
Rick and Ann Calhoon
ChemFirst/First Mississippi Corporation
Jim and Sibyl Child
Peter and Mireille DeBeukelaer
Mark and Kit Fields
Jan Garrick
Tish and Haden Hughes
Danny Marks and Laura Miller Marks
Modena Martin
Luther and Ginnie Munford
Coby Parker and John Stringer
Mary Purvis
Julius and Stephanie Ridgway
George and Ann Schimmel
James and Kathleen Young
Steve and Chris Zachow

Arch Angel (\$500-\$999)

Virginia and David Allen
Mary Helen and Bo Bowen
Drs. Tim and Cheryl Coker
Peggy Coleman
Rusty and Ali Comley
Bill and Myra Cook
Beckie and Richard Feldman
Tina Fortenberry

Cecil Fox
Bill and Kathleen Geary
Bob and Alice Gorman
Denise Halbach
Jim and Beverly Herring
Mary Jabaley
Nora Katz
Monika and Walter Knepper
Shae and Jim Lowery
Kathy Mahloch
Frank Parent
Carol and George Penick
Margaret and Brad Pigott
Christian and Alla Vance
Richard and Susan Slaymaker
Michael Smith
Sally and Bill Thompson
Rebecca Thompson
Judy and John Waskom
Sandra and Charles S. West
Betty Wong

Angel (\$300-\$499)

Chuck Addington
John and Betty Allin
Sarah Jane Alston
Richard and Martha Blount
Catherine Boone
Mimi Bradley
Margaret and Carter Brown
Steve Butler
Dr. Suman and Roslyn Das
Dr. Katy Farrell
Betsy and Henry Folmar
John and Marianne Gaudin
Lester and Ellen Hailey
John and Diana Howell
Dr. Mary Jane Magruder and Jeffrey Levin
Jim and Martha Lightsey

Virgi and Chuck Lindsay
Darri and Keith Mansel
Richard and Sylvia Mills
Joe Morris
Beth and Steve Orlansky
Bill and Susan Osborne
Kim and Trey Porter
Naomi and Bob Ridgway
Holly Wagner
Carla and Randall Wall
Mary Alice and Donny White
Debbie Wolfram

Patron (\$100-\$299)

Jerry P. Agent
Ivy and Frank Alley
Katherine Anderson
Ann Anderson
Melissa and Ron Applewhite
Carshena Bailey
Julia C. Baker
Bill and Judy Barnett
Jayne Britt
Jean and Glen Bush
Thorne and Kelly Butler
Ramon and Mary K. Callahan
Katherine Chesteen
Roger Clifford Clapp
Jan Collins
Gary and Becky Conley
Tom and Sandi Corlett
Kitty Cottingham
Margaret Cupples
Nancy F. Curtis
Melissa and Ralph Daniel
Emily and Jimmy Dossett
Kelley Walton Fenelon
Judy Ferguson
Wayne Ferrell
Sue Simmons Freeman

Libby Garland
Danny Carroll and Robert Gatewood
Andy and Alice Geoghegan
Jackie and Carter Haines
Dianne Harms
Roger and Peggy Hastings
Gail Helms
Lane Greenlee and Rebecca Hodges
Mrs. Taylor Holland
Ellen Hontzas
Carolyn Hughes
Paula James
Mike and Kathleen Duke
Jacque Keltner
Ted King
Jon and Lisa Krassny
Skip Kuzel
Jan and Doug Lemon
Harvey and Sandy Little
T. Longmire
Grace Marsh
Natalie Maynor
Chuck McIntosh
Jim and Sharon Miller
Debra Monroe-Musgrave
Mary Clay Morgan
Brittany Mounts
Susan and W. Hibbett Neel
Jim and Jenny Neeld
Fran Noone
Jeanne and Eric Olson
Kathy and Walter Palmer
JoJo and Susan Payne
Dierdre Payne
Clif and Kim Peyton
Steve Price and Deirdre Danahar
George and Jann Puckett
Steve Rachel

Karen Redhead
Frank and Rebecca Rives
Brenda Roberts
Franceska Loeb Roland
Jeanne and Steve Rozman
Cheryl and Richard Rula
Stephen Schutze
Susan Shands-Jones
Kathy Sones
Maureen and Clyde Staley
Ruth and Forrest Stringfellow
John and Liza Sullivan
Anthony and Sheryl Thomas
Terry Thomas
Linda Thompson Robertson
Susanne Tomlinson
Marjorie Underwood
Ed Van Cleef
Jimmy and Becky Vickery
Ree Walden and Mike Bishop
Carol Walker
Cecile Walsh Wardlaw
Anne L. Webster
Bruce Welch
Jo Ann S. Welch
Gigi and Vic Welsh
David and Michelle Williams
Pat McAllister and Jane Woosley

Contributors (\$50-\$99)

Bob and Penny Ammons
Brad Ford
Jimmy and Renee Jones
Shae and Jim Lowery
Sandra Polanski

In Honor of Barbara Austin:

Dawn and David Buck
Alfreda Spell

In Memory of Foye Bycofski:

Al and Billie Green
Susan and Macy Hart
Bill McCarty
Mary and Chico Taylor

In Memory of Janet Gray and Russell Luke:

Dawn and David Buck
Bill McCarty
Francine Reynolds

In Memory of C.B. Carroll:

Barbara Austin

In Memory of Iva O'Quinn Stewart:

Barbara Austin

In Memory of Matthew Thurmond:

Susan and Macy Hart

In Memory of Andy Reynolds:

Susan and Macy Hart

In Memory of Merriam Davis

Barbara Austin
Susan and Macy Hart
Bill McCarty

In Memory of Andy Reynolds

Susan and Macy Hart

HOW CAN YOU HELP? Without the support of people like you, there simply would not be a new stage theatre. We welcome your help. Whether it is in the form of a tax-deductible contribution or a product or service, every gift is deeply appreciated and recognized.

If you would like to contribute, contact New Stage Theatre, P.O. Box 4792, Jackson, MS 39296-4792, (601) 948-3533.

SPONSORS

Our Season sponsors provide funding that makes it possible for us to achieve artistic excellence. We salute our 2024-25 season sponsors, and we encourage you to patronize these businesses.



SAM E. AND BURNICE C. WITTEL FOUNDATION

LINDA AND JOHN SCHMIDT

THE DORSEY J. BAREFIELD CHARITABLE TRUST



New Stage programming is made possible with the support of:



THE BILL McCARTY III FOUNDATION



THE CHISHOLM FOUNDATION



NEW STAGE
Theatre

THE JANE REID PETTY THEATRE CENTER

1100 Carlisle • Jackson, Mississippi 39202

BOX OFFICE HOURS

Monday-Friday: 10:00 a.m. – 5:00 p.m.

During performances, will remain open until 7:00 AND box office hours on Saturdays to be open until 7:00

Saturday: 4:00 p.m. – 7:00 p.m.

Sunday: 1:00 p.m. – 3:00 p.m.

Saturday and Sunday hours only apply during the run of a show.

TELEPHONE/WEBSITE

Main Number: (601) 948-3533

Box Office: ext. 222

Artistic Director: ext. 224

Managing Director: ext. 246

Marketing Director: ext. 225

Education Director: ext. 232

Website: www.newstagetheatre.com

Email: mail@newstagetheatre.com

New Stage Theatre is a Constituent of Theatre Communication Group (TCG), the national organization for the American theatre.