

NEW STAGE THEATRE PRESENTS

ONE MAN, TWO GUVNORS

BY
**RICHARD
Bean**

COMEDY BASED ON
THE SERVANT OF TWO MASTERS
BY CARLO GOLDONI
WITH SONGS BY GRANT OLDING

DIRECTED BY **FRANCINE
THOMAS REYNOLDS**

FEB 17-MAR 1, 2015

STAGE MANAGER
ELISE MCDONALD

COSTUME DESIGNER
LESLEY RAYBON

LIGHTING DESIGNER
BRENT LEFAVOR

SCENIC DESIGNER
RICHART SCHUG

TECHNICAL DIRECTOR /
PROPERTIES DESIGNER
RICHARD LAWRENCE

NEW STAGE
Theatre

SPONSORED BY

**COMMUNITY
FOUNDATION
of GREATER JACKSON**

THE MEYER AND GENEVIEVE FALK ENDOWMENT
FUND FOR CULTURE AND ART

The Clarion-Jedger

ONE MAN, TWO GUVNORS

ONE MAN, TWO GUVNORS was first performed by Lyllelton Theatre, National Theatre on 17th May 2011 in a National Theatre production. It then transferred to the Adelphi Theatre and then to Theatre Royal Haymarket in a National Theatre production.

ONE MAN, TWO GUVNORS was first performed at Music Box Theatre, New York on 6th April 2012. The original Broadway Production was produced by Bob Boyett, National Theatre of Great Britain under the direction of Nicholas Hytner and Nick Starr, National Angels, Chris Harper, Tim Levy, Scott Rudin, Roger Berlind, Harriet Leve, Stephanie P. McClelland, Broadway Across America, Daryl Roth, Jam Theatricals, Sonia Friedman, Harris Karma, Deborah Taylor, Richard Willis.

ONE MAN, TWO GUVNORS is presented by special arrangement with Dramatists Play Services, Inc., New York.

There will be one 10 minute intermission

ONE MAN, TWO GUVNORS contains some naughty bits and naughty language – parental guidance is encouraged.

The videotaping or other video or audio recording of this production is strictly prohibited.

CAST (In Order of Appearance)

Charlie "The Duck" Clench Bill Ford Campbell*
Harry Dangle..... John Howell
Alan Dangle..... Patrick Moran
Pauline Clench Loring Tharpe
Lloyd Boateng Yohance Myles*
Dolly..... Jessica Wilkinson
Francis Henshall..... Joseph Frost
Rachel Crabbe..... Kerri Courtney Sanders
Stanley Stubbers David Lind
Gareth..... Augustus Bennett
Alfie Eric Eaton
Ensemble Augustus Bennett, Eric Eaton,
Katie Beth Jewell, Valencia Proctor

UNDERSTUDIES

Understudies never substitute for listed performers unless a specific announcement is made at the time of the performance.

For Lloyd, Francis: Augustus Bennett; For Alan, Charlie: Neill Kelly; For Stanley, Harry: Eric Eaton; For Dolly, Pauline: Valencia Proctor; For Rachel: Katie Beth Jewell

BAND

Lead Guitar Jimmy Turner
Rhythm Guitar Joe Carroll
Bass..... Andrew Dillon
Percussion/Banjo Jeremy Hilton

*The actor appears through the courtesy of Actors' Equity Association, the Union of Professional Actors and Stage Managers in the United States.

ABOUT THE PLAY

The *Commedia dell'Arte* (Comedy of the Guild) was the first professional theatre in Europe. Appearing first in the mid-1500s, it toured the town and village squares of Italy with a series of stock scenarios and highly skilled performers, who played clearly defined character types. Stupid masters had cunning servants, star-crossed lovers had pert maids, feisty daughters escaped from their miserly fathers. All their dialogue was improvised and it was regularly interrupted by music, dancing, tumbling and big set-piece gags known as lazzi.

Carlo Goldoni (1707-1793) was accused of killing *Commedia Improvvisata* by writing it down. He learned French to read Moliere, and used him as a model to make plays from what he saw around him in the Venetian theatre. He wrote around 200 plays, and later in his career he moved towards something like social realism. But *The Servant of Two Masters* is pure *Commedia* – a compendium of traditional low comedy, and traditional comic types, headed by the hungry servant of the title: Truffaldino, the Harlequin – gluttonous, nimble, stupid, but possessed of a certain low cunning.

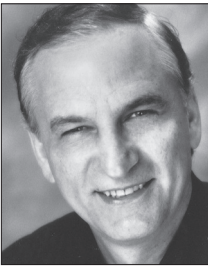
Harlequin joined the cast of the earliest British pantomimes; popular English comedy and *Commedia* share many of the same roots. *One Man, Two Guvnors* pays tribute to both. It transplants the action of *The Servant of Two Masters* from 1740s Venice to 1960s Brighton – which, like Venice, is the kind of seaside town where you might want to hole up if you're on the run from the law in the big city. But the plot is Goldoni's plot, and it follows Goldoni closely – though the dialogue has been adapted freely.

And if much of the show looks to music hall, variety (the English equivalent of vaudeville), pantomime and the kind of comedy that still plays at the end of the pier on the English seaside, they in their turn look back to the town squares of Italy as much as to the inn yards of England. No theatrical tradition can claim exclusive ownership of slapstick, improvisation, pratfalls, musical interludes, archetypal comic characters and farcical plots that are driven by hunger, lust and greed.

THE CAST



AUGUSTUS BENNETT (Gareth/Ensemble/US Lloyd, Francis) has been seen this season at New Stage as Skylights the Pirate in *Peter Pan* and Ralph Abernathy in *All The Way*. He is a recent graduate of the University of Central Florida, holding a Bachelor of Fine Arts in theatre. Before arriving at New Stage, he finished touring *King Arthur's Quest* with Missoula Children's Theatre. His favorite acting credits include *Gem of the Ocean*, *Drowsy Chaperone*, *Kiss Me, Kate*, *A Little Night Music*, and *The Laramie Project*. He has also directed George C. Wolfe's *The Colored Museum* and the musical *I Love you, You're Perfect, Now Change*. Visit his website www.augustusbennett.com to learn more.



BILL FORD CAMPBELL* (Charlie "The Duck" Clench) recently appeared as Sen. Richard Russell in *All The Way* and as Uncle John in *The Grapes of Wrath*. Over the past 30 seasons, some of his favorite roles have included Ben in *Broadway Bound*, Paul in *Misery*, Ivan in *Art*, Frank in *Molly Sweeney*, Scrooge in *A Christmas Carol*, Tito in *Lend Me A Tenor*, Nixon in *Nixon's Nixon*, Froggy in *The Foreigner* and Carl in *Getting Out*. His musical credits include El Gallo in *The Fantastiks*, The Pirate King in *The Pirates of Penzance* and Dorris R. Gladney in the world premiere of the musical based on Eudora Welty's *The Ponder Heart*. Campbell also has appeared at St. Petersburg's American Stage, Little Rock's Arkansas Repertory Theatre, the Hippodrome in Gainesville, Fla. and Mill Mountain Theatre in Roanoke, Va.



ERIC EATON (Alfie/Ensemble/US Stanley, Harry) is excited to be making his New Stage Theatre debut. Not a stranger to the stage, some of his select credits include Mel in *The Prisoner of Second Avenue*, Nathan Detroit in *Guys 'n' Dolls*, Dr. Gerard in *Appointment With Death*, Demetrius in *A Midsummer Night's Dream*, and numerous roles as an active voiceover artist for radio and television productions. He is honored to be working once again with Francine Reynolds and would like to thank her and his fellow cast for the

actor chat

Stay and meet the cast after *One Man, Two Guvnors* following the show on Wednesday, February 18 and Wednesday, February 25. Audience members may ask questions of the actors, director and designers in an informal setting.

opportunity and memories. Much love to his parents, Emmett and Chris, and many thanks to his family and friends for their loving support. He dedicates this performance to his two sons.



JOSEPH FROST (Francis Henshall) lives in Jackson, with his wife Shannon, and their children Nina, Darby, Emory and Beau. He has appeared in the New Stage productions of *Peter Pan*, *All The Way*, *The Crucible*, *The Trip to Bountiful*, *Twelfth Night*, *Tuesdays with Morrie*, *All My Sons*, and three times in *A Christmas Carol*, as well as the UnFramed productions of *Dead Man's Cell Phone* and *Betrayal*. His other acting experiences range from

improv comedy to independent film work to an award-winning turn as *Hamlet*. As a writer, Frost's plays have been staged around the country, most recently the premieres of *Johanne d'Arc* and *The Case of the Blue Darling* at Belhaven University. Frost is a board member and head of the New Works Initiative for Christians in Theatre Arts (CITA), is the Mississippi state representative to the board of the Southeastern Theatre Conference (SETC) from the Mississippi Theatre Association (MTA). Frost is a professor of theatre at Belhaven University, and is the artistic director of **the floodlight theatre company**.



JOHN HOWELL (Harry Dangle) most recently appeared at New Stage as Hubert Humphrey in *All the Way*, and for the opening week as a substitute actor in *Mrs. Mannerly*. Previous credits include playing Watson in *Sherlock Holmes and the Adventure of the Suicide Club* and *Sherlock Holmes: The Final Adventure* and roles in *All My Sons*, *The Crucible*, and *Twelfth Night*. He and his wife, Diana, are co-founders of Fondren Theatre Workshop, for

which he currently serves as President. FTW credits include *Through the Looking Glass* (writer/director/actor); *The Monster Monologues* (writer/

actor), and *The Winter's Tale* (director/actor). A veteran performer of more than 50 stage plays, other favorite roles include George in *Who's Afraid of Virginia Woolf?* and Henry in *The Lion in Winter*. He has worked for eighteen years as an arts educator at Casey Elementary School.



KATIE BETH JEWELL (Ensemble/US Rachel) is excited to be the acting/directing intern this season at New Stage! She recently graduated with a BFA in musical theatre from Samford University. There she danced in the ensembles of *White Christmas*, *The Pajama Game*, and *The Wizard of Oz*. At Samford, she also had the opportunity to direct two plays, and serve as assistant director for *The Light in the Piazza*. Favorite roles include Velma Von Tussle in *Hairspray* (FestivalSouth), Charlotte Hay in *Moon Over Buffalo*, and various roles in *The 39 Steps*.



DAVID LIND (Stanley Stubbers) is excited to be back at New Stage where he was seen in *Grapes of Wrath* (Tom Joad), *The Miss Firecracker Contest* (Delmount), *Sherlock Holmes and the Adventure of the Suicide Club* (Nicky), *Dividing the Estate* (Son) and *The Foreigner* (Rev. David). He is a graduate of Millsaps College and Circle in the Square Theatre School. Some of his other New York credits include *The History Boys*, *The Pride*, *The Importance of Being Earnest*, *Pericles*, and others. He would like to thank the wonderful Francine Reynolds for her guidance and for giving him a job, and the brilliant cast, crew and creative. Thank you Mom and Dad. ILY.



PATRICK MORAN (Alan Dangle) is a recent graduate from West Chester University of Pennsylvania where he studied theatre. New Stage credits include *All The Way* and *Peter Pan*, as well as *Gruesome Playground Injuries* for the Unframed Series. This summer he appeared in the Texas Shakespeare Festival's productions of *Macbeth*, *My Fair Lady*, *Cymbeline*, and the world premiere of *The Lost Prince*. Love to his family, especially his MS cousins!

www.patrick-moran.com



YOHANCE MYLES* (Lloyd Boateng) is a native of Birmingham. He is currently a theater and film professor at Jackson State University. He received his BA in theatre from Alabama State University, and his MFA in acting from LSU. He is married to Kimberly Morgan-Myles. Myles is an Equity and SAG-AFTRA actor in the professional industry. He can be currently seen on the *CW* network TV series “*The Originals*” (Joe Dayton). On *NBC* TV series “*Constantine*” (Clarke Devereaux). And also as a guest star on the CBS network TV drama “*Blue Bloods*” (Detective Lee Baldikoski). Myles has completed a series of movie projects which includes: *American Project*, *Worry Dolls*, *North of Hell*, *2 Guns*, *Grudge Match*, *Hours*, *The Host*, and *Fire with Fire*. Other television dramas he is known for are: *Common Law* (USA), *Wild Card* (USA), *Treme* (HBO), *K-Ville* (HBO), and *Remember Sunday* (Hallmark). Although his career is currently elevated in film he has a continued passion for theater in which he accredits his fundamental foundation of artistry. His theatre works includes: *A Soldier’s Play*, *The Whipping Man*, *Hailey’s Comet*, *Brother Size*, *Spunk*, *Thanatos*, *Macbeth*, *Royal Family*, *Satellites*, *Last Days of Judas Iscariot*, *Hair the Musical*, and *King Hedley II*. Myles has also directed productions such as: *Black Fossil*, *Drums of Sweetwater*, *Freeman*, *Ruined*, and *A Lesson Before Dying*. Myles would like to thank Francine and the New Stage family for continuing to build upon the appreciation of good theater and the respect for performing arts in Mississippi.



VALENCIA PROCTOR (Ensemble/US Dolly, Pauline), a Jackson native, is an acting intern for the current season here at New Stage. She is a graduate student of Mississippi College studying Marriage and Family Therapy Program. She has a love for people and the arts and hopes to continue sharing that love in theatres all over the nation. Additionally, she would like to explore teaching a Theatric Therapy course for adolescents.



“Like us” on Facebook and follow us on Twitter to get updates on events, casting, and more!



KERRI COURTNEY SANDERS (Rachel Crabbe) has enjoyed such recent New Stage credits as Rose of Sharon in *The Grapes of Wrath*, Brooke Wyeth in *Other Desert Cities*, and Jordan Baker in *The Great Gatsby*. She also had the honor of serving as acting/directing intern for the 2011-2012 season. Some of Sanders' other favorite acting credits include Helena in *A Midsummer Night's Dream*, Tamra/Bridgette in *Quiet on the Set*, and Nora in *A Doll's House*. She also serves as instructor for New Stage Theatre's Youth Acting Troupe. She currently lives in Brandon with her husband, Michael, who makes every performance possible.



LORING THARPE (Pauline Clench) is making her New Stage debut. A native of the Jackson Metro area, Tharpe attended Hinds Community College in Raymond where she earned her Associates of Arts degree and then had two years of study at the University of Mobile. She then attended The University of Southern Mississippi where she completed her Bachelor of Arts degree.



JESSICA WILKINSON (Dolly) is a SAG-AFTRA actor from the Jackson area. Some favorite New Stage credits include *The Miss Firecracker Contest*, *Hairspray*, *The Foreigner*, *Boeing Boeing*, *The 39 Steps*, *To Kill a Mockingbird*, *Spitfire Grill*, *The Miracle Worker*, and *Annie*. Select feature film credits include roles in *The Livingston Gardener* with James Kyson (releasing in March), *Starve*, which recently premiered on the SyFy Channel, James Franco's adaptation of *As I Lay Dying*, and *Joe Dirt 2* with David Spade. Wilkinson has a master's degree in English from MC and taught high school English and theatre arts for four years. During that time, she was awarded the award for Distinguished Arts Educator in Theatre Arts by the MS Alliance for Arts Education. Wilkinson sings with a bluegrass band, Angel Bandits, which was put together for the *Grapes of Wrath* production. (www.facebook.com/fiveangelbandits) Among her real life roles, she is a mom and a wife. Wilkinson's very grateful to her family for all their support. www.JessicaWilkinson.net

THE BAND

JOE CARROLL (Rhythm Guitar) is a longtime student of Southern Americana and Roots music. Beginning his professional career playing behind Tommie “T-Bone” Pruitt while attending the University of Southern Mississippi, Carroll moved to Jackson in 2005 and soon found himself performing next to many of the area’s local musicians including Tim Avalon, Eddie Cotton, and Cary Hudson. In 2011, he moved to Chicago where he performed and studied along with members of the Old Town School of Folk Music. Recently returned to Jackson, you can find him playing both solo and ensemble shows from Little Rock to the Mississippi Gulf Coast.

ANDREW DILLON (Bass) is a Jackson, Miss. native. He is the son of local blues legend, Sherman Lee Dillon. Dillon has a Bachelor’s Degree in music education from Jackson State University. He served as Concert Master in the JSU Chamber Orchestra for four years before graduating in 2013. He has since been performing Blues and R&B in central Mississippi as “Mr. Dillon and the Jukebox” as well as playing fiddle in the “Angel Bandits”. Dillon has played for several New Stage productions including: *Shrek The Musical*, *The Grapes of Wrath*, *Smokey Joe’s Café*, *Hairspray*, and *Breaking Up is Hard to Do*. Dillon teaches music at North Jackson Elementary School.

JEREMY HILTON (Percussion/Banjo) is from Jackson, Miss. He is in his last year at college to gain his Bachelor’s Degree in music education. He studied percussion under Paul Hiendl (high school instructor, now at Hinds Community College), Ricky Burkhead (University of Mississippi), Owen Rockwell (Jackson State University), and Rodger Little (Jackson State University). He has been a drum set player for “Gonzo and the Clean Sneak”, “Cadillac Funk”, and is currently in the group “Jazz for Jackson”. Hilton has played for the productions of *Peter Pan* at New Stage and *Company* this past summer at The Actors Playhouse.

JIMMY TURNER (Lead Guitar) earned his Bachelors of Music and Masters in Music in guitar performance degrees from the University of Southern Mississippi. He has performed extensively across the United States, and has been heard on Mississippi Concert Hall on PRM. He has performed in many guitar master classes, including those for Jorge Morel, Carlos Barbosa-Lima, Adam Holzman, and Michael Chapdelaine. Turner maintains an active teaching studio, performance schedule, and serves as an adjunct faculty member at Millsaps College in Jackson, Miss. His students have won top honors and prizes in local and state competitions. Turner also teaches the courses “Music: The Art of Listening”, “World Music: Traditions and Transformations” and “Popular Music Genres” at the Tulane University campus in Madison. Turner has played guitar for New Stage Theatre’s productions of *Shrek The Musical*, *Breaking Up Is Hard To Do*, *Joseph and the Amazing Technicolor Dreamcoat*, *The Marvelous Wonderettes*, and *Hairspray*. He resides in Madison with his wife, daughter and son.

THE PRODUCTION STAFF

RICHARD BEAN (Playwright) was born in East Hull in 1956. After school, he worked in a bread plant before leaving to study psychology at Loughborough University. Bean has worked as a psychologist and a stand-up comedian. He was awarded the 2011 Evening Standard Award for Best Play for *The Heretic* and *One Man, Two Guvnors* the 2011 Critics' Circle Award for Best Play and 2012 Whatsonstage.com Award for Best New Comedy, both for *One Man, Two Guvnors*. His work for the stage includes *One Man, Two Guvnors* (National Theatre (Lyttelton)/Adelphi Theatre/Theatre Royal Haymarket/Music Box Theatre, New York/World Tour); a stage version of David Mamet's *The House of Games* (Almeida); *The Big Fella* (produced by Out of Joint); *Pub Quiz Is Life* (Hull Truck); *England People Very Nice* (National Theatre (Olivier). Olivier Award Nomination for Best New Play); *The English Game* (produced by Headlong); *Up on Roof* (Hull Truck. Nominated for TMA Play of the Year); *In the Club* (Hampstead Theatre); a version of Moliere's *The Hypochondriac* (Almeida); *The Heretic, Harvest* (Nominated for Evening Standard and Olivier Best New Play Awards. Winner Critics' Circle Best New Play), *Honeymoon Suite* (Pearson Play of the Year), *Under the Whaleback* (George Devine Award) and *Toast* (all at the Royal Court); *The God Botherers* (Bush Theatre); *Smack Family Robinson* (Newcastle Live!); *The Mentalists* (Lyttelton Loft, National Theatre); and *Mr. England* (Sheffield Crucible Theatre). His radio plays include "Of Rats and Men;" "Yesterday;" "Unsinkable;" and "Robin Hood's Revenge."

FRANCINE THOMAS REYNOLDS (Director/Artistic Director) has worked as a professional actress and director for more than 24 years. She has been the artistic director at New Stage Theatre since 2006 and most recently directed *All The Way*. Last season she also directed *The Miss Firecracker Contest*, *The Whipping Man* and *The Grapes of Wrath*. In 2009, she directed *Cat on a Hot Tin Roof*, which received the Best Play Award from the Jackson Free Press. She appeared in New Stage productions as Polly in last season's *Other Desert Cities*, Lucille in *Dividing the Estate* and as Edna Earle in Eudora Welty's *The Ponder Heart*. She has directed a variety of shows including *Hairspray*, *Mahalia: A Gospel Musical*, *The Great Gatsby*, *Lombardi*, *Boeing, Boeing*, *Breaking Up is Hard to Do*, *Sherlock Holmes: The Final Adventure*, *A Christmas Carol*, *Gee's Bend*, *A Raisin in the Sun*, *Annie*, *Joseph and the Amazing Technicolor Dreamcoat*, *A Soldier's Play* and *I Love You, You're Perfect, Now Change*. Some of her favorite acting roles include Beatrice in *Much Ado About Nothing*, Chris in *Rumors* and Belinda in *Noises Off*. Reynolds has recently been invited to serve on the Board of Directors for the Theatre Communications Group (TCG), the national organization for the American theatre and she was a member of the Leadership Mississippi Class of 2014. Panels and other associations include the National Endowment for the Arts 2013 grants panel, Poetry Outloud, Mississippi Arts Commission grants panel, The Mississippi Alliance for Arts Education Board of Directors and The Mississippi Theatre Association Board of Directors. Reynolds has enjoyed adjudicating and serving as commentator for the Mississippi High School Drama Festival, Southeastern Theatre Conference auditions

and Mississippi's English Speaking Union Shakespeare Competition. Reynolds worked as a locations casting director for several years. The last feature film she cast, ***Ballast***, won top awards at the Sundance Film Festival. Originally from the Upper Peninsula of Michigan, Reynolds enjoys living in Jackson with her husband, Chuck.

ELISE MCDONALD (Stage Manager) is in her fourth season at New Stage. She is a graduate of The University of Southern Mississippi with a Bachelor's degree in Theatre. She began stage management while at Southern and was able to work on shows such as ***Light Up the Sky***, ***A Lesson From Aloes***, ***Fallen Angels***, ***The Good Doctor***, ***Big Love***, ***Little Shop of Horrors***, and ***Electra***. She was also able to stage manage ***Carmen*** with the Mississippi Opera. She worked as a Production Assistant in Stage Management at the Arkansas Repertory Theatre and had the chance to work backstage on shows such as ***Les Miserable***, ***The Foreigner***, ***The Elephant Man*** and ***The Who's Tommy***. McDonald has previously stage managed several shows at New Stage Theatre including: ***Twelfth Night***, ***Driving Miss Daisy***, ***Dracula***, ***Annie***, ***Lombardi***, ***The Lion the Witch and the Wardrobe***, ***All My Sons***, ***The Marvelous Wonderettes***, ***The Foreigner***, ***The Great Gatsby***, ***A Christmas Memory***, ***Cat in the Hat***, ***Mahalia***, ***Other Desert Cities***, ***Hairspray***, ***Sherlock Holmes and the Adventure of the Suicide Club***, ***The Grapes of Wrath***, ***A Christmas Carol***, ***Goodnight Moon***, ***The Whipping Man***, ***The Miss Firecracker Contest*** and ***Shrek the Musical***. She is excited to be working with New Stage and would like to thank her family and friends for their unending support!

BRENT W. LEFAVOR (Resident Designer/Lighting Designer) M.A., MFA, has been a professional director and set/lighting designer since 1976. He designed lights at Robert Redford's Sundance Summer Theatre; was a founding member, director and designer for Walk-On's Inc. in Salt Lake City; worked as a director and designer Grand Teton Mainstage theatre in Jackson Hole, Wyo. Lefavor moved to Mississippi in 1983 where he taught for 25 years at a local liberal arts college. During that time he directed numerous productions, designed sets and lights for more than 100 shows, and taught in all areas of theater education. Lefavor begins his fifth season at New Stage Theatre where he has designed lights for numerous productions; his set designs for New Stage include: ***All My Sons***, ***The Miracle Worker***, ***Cat on a Hot Tin Roof***, ***Smokey Joe's Café***, ***Noises Off*** and ***You're a Good Man Charlie Brown***. He has been seen as an actor in Jackson, appearing as Teyve in ***Fiddler on the Roof***, Cromwell in ***A Man for All Seasons*** and C.S. Lewis in ***Shadowlands***.

LESLEY RAYBON (Costume Designer) joined New Stage in 2004 as an acting intern and since then has worked both onstage and off. She has found her place as the resident costume designer and she has enjoyed designing shows and working with guest designers and costume shop assistants. Some of her favorite shows include: ***The Grapes of Wrath***, ***The Great Gatsby***, ***Goodnight Moon***, and ***The Cat in The Hat***. When not at New Stage, she is a barista at Starbucks, a puppeteer with Puppet Arts Theatre, and wife to her wonderful husband Lawrence.

RICHARD LAWRENCE (Technical Director/Properties Designer) serves as the Vice President of Fondren Theatre Workshop and most recently appeared in *A Christmas Memory* at New Stage, FTW's *The Rocky Horror Show*, *Buck Nekkid for Jesus*, and directed FTW's Christmas show, *Every Christmas Story Ever Told*. He also was the director of the widely successful productions of *Cabaret*, and *Company*, which were joint productions of FTW, and Actor's Playhouse of Pearl, with support from New Stage. Lawrence, has been seen in New Stage productions of *Trip to Bountiful* and UnFramed's *The Eight: Reindeer Monologues*, *How I Learned to Drive*, *The Weir*, *Circle Mirror Transformation*, and *Dublin Carol*. Lawrence has won two "Best Set" awards at Mississippi Theater Association conferences.

RICHART SCHUG (Scenic Designer/Design Assistant/Production Assistant) has worked as a scenic painter and designer in New York at Purchase College SUNY, as well as at Timberlake Playhouse in Illinois, and Attic Theatre in Wisconsin. He has been at New Stage since September 2012.

CLARA SEITZ (Asst. Scenic Designer/Scenic Charge Artist/Production Assistant) is a graduate of the Mississippi University for Women and has been with New Stage for the last three seasons. *The Miss Firecracker Contest* is her twelfth show at New Stage. Previous credits include scenic design for *High School Musical, Jr.*, *The Emperor's New Clothes*, and *Dublin Carol*. Seitz was also the scenic designer for the Unframed series production *Stick Fly*.

Assistant Stage Manager	Neill Kelly
Sound Engineer.....	Lawrence Raybon
Master Carpenter	Jimmy "JR" Robertson
Light Board Operator.....	Amanda Dear
Sound Board Operator.....	Elise McDonald
Running Crew.....	Trisdon Runnels, Clara Seitz

THE ADMINISTRATIVE STAFF

DAWN BUCK (Managing Director) began her career at New Stage in the fall of 1981 as a box office assistant. Since that time she has worked as box office manager, audience services director, house manager, bookkeeper, business manager and marketing director. Her door, she says, is always open to comments and concerns about the theatre. Buck's other professional credits include The International Ballet Competition, Thalia Mara Arts International presenting the *World Performance Series* and Imageworks *films for business*. She is a graduate of Leadership Jackson and lives in Jackson with her husband David.

BILL MCCARTY III (General Manager) is a graduate of the University of Mississippi and has extensive background in wholesale and retail sales and real estate property management with the Jitney Jungle stores. McCarty has volunteered with New Stage for more than 38 years in all areas including production, running crews, lighting and sound design and New Stage fundraising events. He is involved in the day-to-day management, maintenance and production for the theatre and serves on the Board of Directors. His favorite design credits are *Greater Tuna* 1986 production, *A Streetcar Named Desire*, *The Gin Game* and *A Christmas Carol* 1984 production.

MELISSA TILLMAN (Marketing Director) is a graduate of Belhaven University where she received a B.A. in technical theatre. Most recently at New Stage, she served as the audience services director. She has worked as a box office associate at Lawlor Events Center in Reno, Nevada and assisted with many box office activities at Belhaven University. Tillman has stage managed many shows in several parts of the country, including Las Vegas and Tennessee. Her stage managing credits include *Oklahoma!*, *Meet Me in St. Louis*, *The Wizard of Oz*, *Taming of the Shrew* and *Love's Labours Lost*. Her most recent work includes *Noye's Fludd* and *La Boheme* with the Mississippi Opera. This is Tillman's ninth season with New Stage. She currently resides in Ridgeland with her husband, Kyle, son, River, and their dog, Charlie Brown.

CHRIS ROEBUCK (Education Director) graduated from Mississippi College with a B.A. in history. He taught for two years at Madison Central High School, where among other responsibilities he assisted with the Drama Club. Roebuck was an acting intern at New Stage Theatre, working with four other interns to take three touring shows across the state. Among his numerous professional acting credits, Roebuck has appeared in *All The Way*, *Shrek*, *Hairspray*, *The Foreigner*, *Annie*, *The 39 Steps*, *A Soldier's Play*, *A Year with Frog and Toad*, *The Ponder Heart*, *A Christmas Carol*, *Idols of the King*, *Forever Plaid*, and *A Raisin in the Sun*. In addition to the education touring shows, his directing credits include *Goodnight, Moon*, *The Cat in the Hat*, *The Lion*, *The Witch*, and *The Wardrobe*, *The Weir*, *Lilly's Purple Plastic Purse*, *A Christmas Carol* and *Dead Man's Cell Phone* at New Stage and *American Buffalo* and *Dinner with Friends* with Fondren Theatre Workshop.

AMY SMITH (Box Office Manager) is enjoying her fifth season at New Stage. A Mississippi native, Smith studied theatre performance at Belhaven University. She has stage managed shows such as *Almost, Maine* and *Five Women Wearing the Same Dress* for New Stage's Unframed Series, *Rabbit Hole* (2010 SETC Winner) for Actor's Playhouse, and *Die Fledermaus* for Mississippi Opera. Smith also directed the regional premier of *The Light in the Piazza* at Belhaven University, for the music department. When not at the theatre, Smith is playing with her two weimaraners, Dutch and Lily Belle, or planning her next trip to visit family in Alaska.

BETTY WONG (Box Office Assistant/ Education Consultant) begins her tenth season at New Stage. She enjoys traveling to schools throughout the state with the Professional Intern Company to provide live theatre experiences for students of all ages. When not on the road, you can find Betty in the box office. She has also served for many years as a volunteer in other areas of the theatre. Other work experiences include the Mississippi International Cultural Exchange

Commission and the Mississippi Department of Education. She has served as a consultant to school districts throughout the state of Mississippi. Wong has a B.S. degree in educational psychology from Mississippi State University, and a M.Ed. from Delta State University.

BARBARA MARTIN (Box Office Assistant/Business Assistant) is in her nineteenth season at New Stage. First joining the staff in 1997, she has served as box office assistant for seventeen years and as box office manager for the two years before and during the Intermission Season. She also assists with development and business office functions.

CARLA MARSH (House Manager) received her B.A. in criminal justice with an emphasis in juvenile justice from Jackson State University. She is pleased to be returning to New Stage for her ninth season. Marsh has been employed with the Hinds County Sheriff's office for more than thirteen years.

ACKNOWLEDGEMENTS

The staff of New Stage Theatre wishes to thank the following individuals and companies for the generous donation of time and resources to this production and the 49th season.

Fernandez Creative Services	Thomas Bryan Ledford	Chuck Reynolds
Hind's County Sheriff's Department	Madison County Gymnastics	Juniper Wallace
John Gaudet	Melissa Miller	Wigs styled by Lynn Evans
Lauren Kalka	John Polles	
	Lawrence Raybon	

NEW STAGE THEATRE BOARD OF TRUSTEES

Executive Committee

Bill Osborne, President
Pat Krakos, Vice President
Ron Applewhite, Treasurer
Stacey Gaines, Secretary
Barbara Austin*
Bill McCarty III*
Crane Kipp
Thad McLaurin

Members

Warwick Alley
Patti Carr Black*
Katie Blount
Nadia Bodie-Smith
Nicole Bradshaw
Tammye Brown

Kay Fort Child*
James K. Child, Jr.*
Mike Cockrell
Sid Davis
Ali Dinkins
Johnny Donaldson
Lea Easley
Bill Grothe
Kelly Haber
Susan Hart
Lauren Kalka
Robert Lesley
Virgi Lindsay
Joe Morris
Bill Osborne
Rebecca Patton
Brad Reeves

Julius M. Ridgway, Jr.
Kathryn Rodenmeyer
John Sewell
Shirley Simpson*
Dorothy B. Stokes
Bean Sulser
Jimmie Sweat
Linda Tanaka
Ronnie Tubertini
Elizabeth Turley
Sam Walker
Ginger Whitwell
Michael Williams

**Lifetime Member*

**COMING
NEXT**



By Moises Kaufman

Directed by Ivan Rider

April 14 – 26, 2015

A Beethoven scholar is driven to solve the genius' greatest mystery while her own life rumbles around her: all gracefully underscored by a live pianist sharing the stage. A mother coming to terms with her daughter. A composer coming to terms with his genius. And, even though they're separated by 200 years, these two people share an obsession that might, even just for a moment, make time stand still. Drama, memory and music combine to transport you from present-day New York to nineteenth-century Austria in this extraordinary American play about passion, parenthood and the moments of beauty that can transform a life.



Help New Stage Go Green!

Programs can be great souvenirs, but if you are not taking yours home please help New Stage by placing it in the recycle bin in the lobby near the box office. We thank you for your help!



**PLEASE JOIN US FOR A DINNER THEATRE
EXPERIENCE—A MUSICAL SALUTE TO THE CELEBRATED
COMPOSERS OF THE GREAT WHITE WAY.**

**THURSDAY, MARCH 19, 2015 AT 6:30 P.M.
AT THE FAIRVIEW INN**

Complimentary wine, Seated three-course dinner, business casual

**A TOAST TO BROADWAY IS A BENEFIT FOR
MISSISSIPPI'S PROFESSIONAL REGIONAL THEATRE.**

**Tickets are \$100 per person and are available at New Stage Theatre.
~ Please RSVP by March 12, 2015 ~**



**DOG SEES GOD: CONFESSIONS
OF A TEENAGE BLOCKHEAD**

By Bert V. Royal | Directed by Katie Beth Jewell

**March 13, 14, & 15, 2015 at 7:30 p.m.
Warehouse Theatre – 1000 Monroe Street**

Tickets \$7 cash/check at the door only

***Dog Sees God** satirizes the Peanuts comic strip by aging its cast of characters into their teenage years. Occupied by teenage angst, experimentation and sexual identity, CB and his friends face questions of morality, the existence of an after-life and true friendship. **Dog Sees God** contains mature content and language.*

2014-2015 SEASON CONTRIBUTORS

It all begins here. The following individuals, corporations and foundations have made generous contributions to New Stage Theatre. Their gifts provide a major portion of the funding necessary to present the productions you enjoy on our stages, the educational programs we offer and help the theatre maintain its standing as one of the nation's best professional regional theatres. Please take a moment to read the list. They deserve your recognition.

GRAND BENEFACTORS \$2500 +

Roy and Beth Harris in honor of Bill McCarty III
John Bower
Beth Henley
C.C. Henley
Bill McCarty III
Jan and Billy Mounger
Charles and Shirley Simpson
Kayo Sykes
Leila Clark Wynn
Wirt and Mary Yerger

BENEFACTORS \$1000-\$2499

Gayle and Holmes Adams
Barbara Austin
Reuben V. and Phyllis Anderson
BankPlus
Fred and Pamela Banks
Chad and Leigh Bridges
Dawn and David Buck
Jean B. Butler
Pat Derian and Hodding Carter III
Jim and Sibyl Child
Mike Cockrell and Scott Jennings
Sid and Kathy Davis
T.H. Etheridge Trust
John Gaudet
Winifred Green
Lester and Ellen Hailey
Susan and Macy Hart
Carolyn (Cookie) Hughes
Pat and Rod Krakos
Virgi and Chuck Lindsay
Dick and Bettye Mason
Mr. and Mrs. Thad McLaurin
Dick Molpus
Alice Paysinger
Julius and Stephanie Ridgway
Glenn and Jan Roebuck
Flo and Howard Stover
Floyd and Bean Sulser
G. Javier Tanaka and Family
The Tanaka Girls
Jimmy and Kathie Young

ARCHANGELS \$500-\$999

William and Joy Aden
Alex and Sarah Jane Alston
Ruth and Carl Black
David and Katie Blount
Nicole and Brian Bradshaw
Katie and Kim Breese

Jean Turner Brewer
Charles and Jane Bryan
Peter and Mireille DeBeukelaer
Terry Dwyer and Marcy Petrini
William and Esther French
Robert and Debra Gibbs
Jim and Lynn Grenfell
Bill and Susan Grothe
Justice and Mrs. Jim Kitchens
Robert and Lynda Lesley
Morris and Judy Luke
Richard McRae
Gloria Miller
Millsaps College Departments of History and Political Science
Joe Morris
Beth and Steve Orlansky
Bill and Susan Osborne
Janet and Luther Ott
George and Carol Penick
Fred A. Powell
Larry Rigby
Dr. Dorothy Boyd Stokes
Mr. and Mrs. Jerry M. Sullivan, Jr.
Russell and Betsy Turley
Jere Nash and Holly Wagner
Sam and Vern Walker
Mrs. Virginia and Dr. Sarah Webb
Kathryn Wiener
Michael and Stacy Williams
Mark and Ashley Willson

ANGELS \$300-\$499

David and Virginia Allen
Dr. Carroll R. Ball
Dr. Joy Byrd
Jeanne Luckett and C.B. Carroll
J. Gordon and Sara H. Christy
Gary and Becky Conley
Bill and Myra Cook
Suman and Roslyn Das
Wayne and Ouida Drinkwater
Kathy Flynt
Ernest and Stacey Gaines
Julie Hendrick
Jim and Beverly Herring
Dudley and Robbie Hughes
Susan and William Jeanes
Kathy Mahloch
Sally McDavid
Anonymous
Dennis and Madeline Mobley
Sam and Debbie Peeples

Brad and Margaret Pigott
Don and Becky Potts
Tommy and Ann Rueff
Jim and Susan Sherman
Richard and Susan Slaymaker
Auvergne and Maragret Williams
Bonnie Wilson
Willard and Margaret Wood
Sam and Cindy Wright

PATRONS \$100-\$299

Chuck Addington
Jerry P. Agent
Risa Aleithawe
David and Pam Allen
Betty and John Allin
Katherine L. Anderson
Brelan Applewhite
Melissa and Ron Applewhite
Edward Balthrop
Jim Barfield
Brent and Christine Barron
Steve and Lenora Bigler
Patti Carr Black
Ron and Ann Blackwood
Richard and Martha Blount
Kay and Steve Boone
Janet and Harry Boswell
David R. Bowen
Dr. Royce and Sherry Castle Boyer
Ray and Jayne Britt
Col. (ret) and Mrs. R.K. Broerman
Dr. Yvonne B. Brooks
Dr. Emma Brooks-Smith
L. Ivan Burghard
Mr. and Mrs. Glen Bush
Thorne and Kelly Butler
Wanda Garner and Larry Butts
Lloyd and Louise Chatham
David Chew
Tom and Peggy Coleman
Myrna Colley-Lee
John and Barbara Collier
Frank and Betty Collins
Evelyn Copeland
Lawrence Cox
Patricia and David Crosby
Bennie and Betsy Daniels
Barbara Dearman
Jenifer and Mark Dendinger
Anna and CT Dexter
Emily and Jimmy Dossett
Larry and Linda Dukes

Tom and Gretel Ekbaum
 Janis H. Erikson
 Rusty and Val Ethridge
 Barbara Fisch
 Pat and Martha Flaherty
 William Fortenberry
 Dickens Q. Fournet
 Cecil Fox, Jr.
 John and Marianne Gaudin
 Nola K. Gibson
 Jimmie Ray Gordon
 Bob and Alice Gorman
 E.H. and Wren Gregory
 Dr. and Mrs. Lawrence Haber
 Linda Hadala
 Carter and Jackie Haines
 Denise Halbach
 David and Linda Harrison
 Ellis and Reva Hart
 Roger and Peggy Hastings
 George and Caroline Hoff
 Mrs. Taylor Holland, Jr.
 Tommy and Ellen Hontzas
 Anonymous
 Anonymous
 Judith C. Jones
 Lauren and Robert Kalka
 Jim and Jona Keeton
 Ed and Dottie Kerstine
 Dr. Diane Beebe and Mr. Bill King
 Edwin King
 Ted and Linda King
 Walter and Monika Knepper
 Phil and Mary Kuhn
 Harriet D. Kuykendall
 Judy Lacy
 James and Joyce Lane
 Todd and Tricia Lawson
 Bob and Lynn Lee
 Anonymous
 Diane and Robert Maddux
 Laura Magee
 Janie and Steve Maloney
 Grace Marsh
 Dan and Marianna Martin
 Milton Matthews
 Anonymous
 Harold and Marie Mayer
 Glenn and Ramona Mayeaux
 Natalie Maynor
 Jane Woosley and Patrick McAllister
 H. Thomas McWilliams
 Gene and Donna Miller
 Don and Mary Sue Mitchell
 Fred Morris III

Ginnie and Luther Munford
 Jason and Susan Murphy
 Ronnie and Melody Musgrove
 Joan Myers
 Mrs. Helen Napier
 Ted and Donna Orkin
 David and Shirley Orlandsky
 Frank U. Parent
 Lee and Lisa Paris
 James A. Peden, Jr.
 Mr. and Mrs. William Pendergrass
 Mark Mays and Laura Pentecost
 Susan Pinkston
 Seymour and Maggie Pooley
 Barbara and Barry Powell
 Dean Miller and Peggy Preshaw
 Carol Puckett
 Nate and Malaika Quartermann
 Tom and Sharon Rhoden
 Jim and Betty Roberson
 Bob and Darlene Roberts
 Brenda Roberts
 David C. Robertson
 Jimmy and Linda Robertson
 Joe and Pat Robertson
 Martha J. Rogers
 Sandra Rogers
 Franceska L. Roland
 Russell and Lele Rooks
 Steve and Jeanne Rozman
 Richard and Cheryl Rula
 Howard and Midge Samsel
 Sherry Sanderson
 Tom and Joyce Sanford
 Pat and Carlene Scanlon
 Ada M. Seltzer
 Ray and Dardanella Shenefelt
 Elise Smith
 Lottie Lee Smith
 McKamy and Martha Smith
 John and Jeannette Sobotka
 Kathy D. Sones
 Don and Joyce Sparks
 Clyde and Maureen Staley
 J. Paul and Merry Ellen Stockwell
 Forrest and Ruth Stringfellow
 Liza and Jack Sullivan
 Robert and Regenia Sulton
 Carol Taff
 Ruth Tant
 Drs. Herman and Jasmine Taylor
 Sandy and Mac Temple
 Worth Thomas
 Greg Thompson
 Jeff and Mona Trotter

Dr. Aaron Trubman
 Jon and Melanie Twiss
 Jimmy and Becky Vickery
 Charlotte and Bill Waller, Jr.
 Bill and Cecile Wardlaw
 John and Judy Waskom
 Tommy and Susan Weems
 Jay Wiener
 LTC and Mrs. Benjamin H. Wesley
 Teresa Westbrook
 Donny and Mary Alice White
 Robert and Allene Wickman
 David and Michelle Williams
 Hibernia Williams
 Pam and Richard Williams
 Dr. and Mrs. Louis J. Wise
 Dick Johnson and Margaret Wodetzki
 Mary C. Workman
 Julia S. Yandell
 Julia Marks Young
 Steve and Chris Zachow

CONTRIBUTORS \$50-\$99

Joe and Gail Buzhardt
 Bill and Beverly Hoge
 Larry and Jacque Keltner
 Lorraine Middleton
 Mack and Carol Sorrell
 Zach and Jan Taylor

Gifts have been made in honor of:

Katie and David Blount in honor of
 Barbara Austin
 Dawn and David Buck in honor of
 Barbara Austin
 Kelly and Lawrence Haber in honor
 of Dawn Buck, Ali Dinkins and
 Barbara Austin
 Barbara Martin in honor of Dawn
 Buck
 Vaughan and Nora Frances McRae in
 honor of The Lindsay Family
 Mary and Chico Taylor in honor of
 Sibyl and Jim Child
 Lynda Wright in honor of Barbara
 Austin

Gifts have been made in memory of:

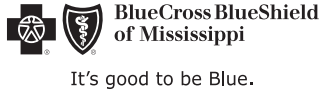
Bill McCarty III in memory of Rosia
 Wade Crisler
 Ann Anderson in memory of John F.
 Anderson, Jr.

HOW CAN YOU HELP? Without the support of people like you, there simply would not be a New Stage Theatre. We welcome your help. Whether it is in the form of a tax-deductible contribution or a product of service, every gift is deeply appreciated and recognized.

If you would like to contribute, contact New Stage Theatre, P.O. Box 4792, Jackson, MS 39296-4792, (601) 948-3533.

Sponsors

Our Season sponsors provide funding that makes it possible for us to achieve artistic excellence. We salute our 2014-2015 season sponsors, and we encourage you to patronize these businesses.



SAM E. AND BURNICE C. WITTEL FOUNDATION

New Stage programming is made possible with the support of:



Charles and Shirley Simpson

**MEYER AND GENEVIEVE
FALK ENDOWMENT FOR
CULTURE AND ARTS**

The Walker Foundation

THE CHISHOLM FOUNDATION

SELBY AND RICHARD MCRAE FOUNDATION

NEW STAGE *Theatre*

THE JANE REID PETTY THEATRE CENTER
1100 Cantile • Jackson, Mississippi 39202

BOX OFFICE HOURS

Monday-Friday: 10:00 a.m. – 5:00 p.m.

*During performances, the box office
will remain open until 7:30 p.m.*

Saturday: 4:00 p.m. – 7:30 p.m.

Sunday: 1:00 p.m. – 3:00 p.m.

*Saturday and Sunday hours only apply
during the run of a show.*

TELEPHONE/WEBSITE

Main Number: (601) 948-3533

Box Office: ext. 222

Artistic Director: ext. 224

Managing Director: ext. 246

Marketing Director: ext. 226

Education Director: ext. 232

Website: www.newstagetheatre.com

Email: mail@newstagetheatre.com

New Stage Theatre is a Constituent of Theatre Communication Group (TCG),
the national organization for the American theatre.